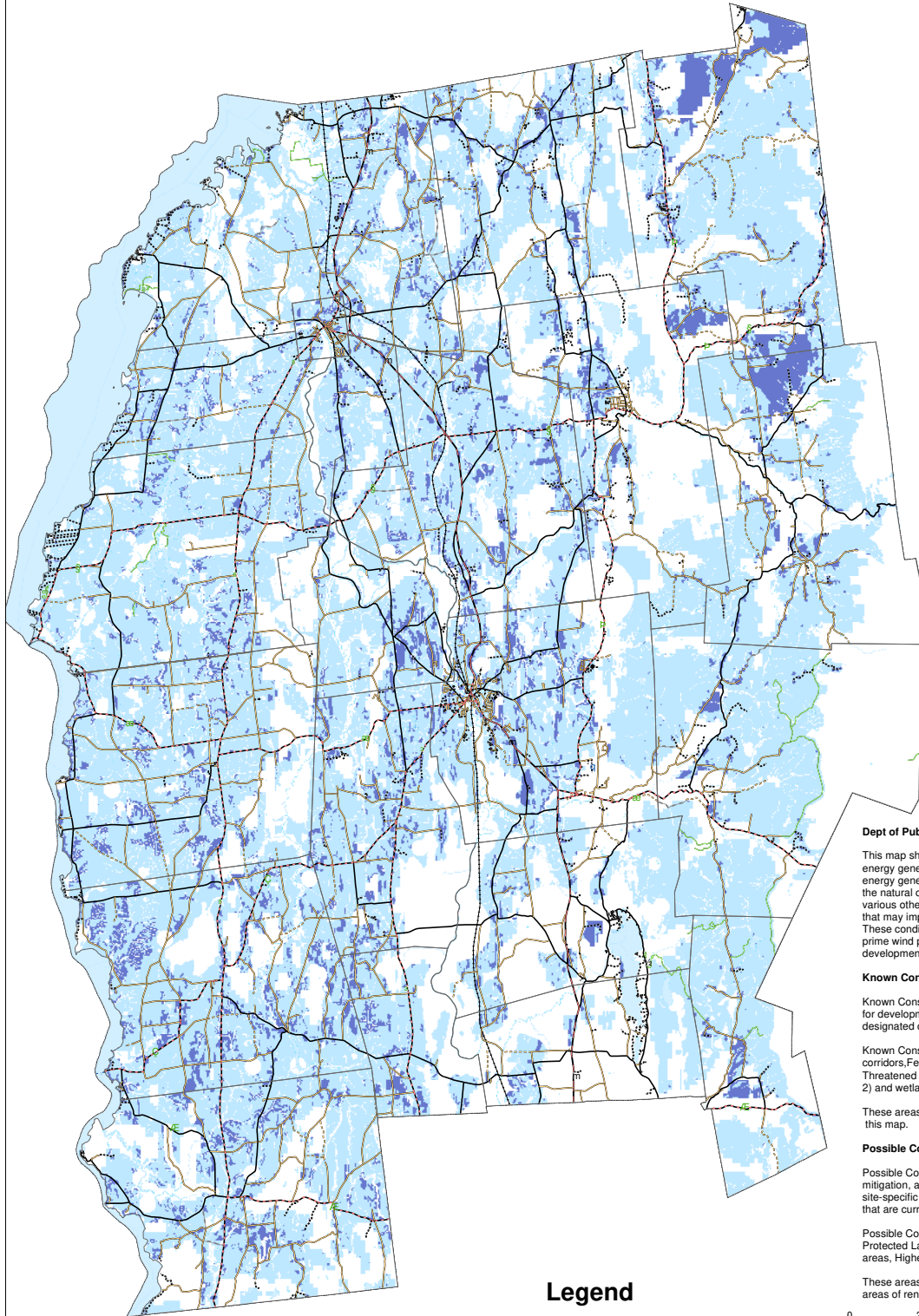


Renewable Energy: Potential Wind Resource Siting Areas



Legend

- Primary Wind Resource Siting Areas (38,799 acres)
- Secondary Wind Resource Siting Areas (341,983 acres)

Dept of Public Service Methodology

This map shows areas of resource potential for renewable energy generation from wind, i.e. locations where renewable energy generation would likely be most feasible according to the natural conditions of an area. This map also considers various other conditions, such as natural resource areas, that may impact the feasibility of renewable energy development. These conditions are referred to as constraints. Areas of prime wind potential exist where the natural conditions make development feasible and no constraints exist.

Known Constraints

Known Constraints signal likely, though not absolute, unsuitability for development based on statewide or local regulations or designated critical resources.

Known Constraints include: Vernal pools, FEMA floodways, river corridors, Federal wilderness areas, Natural Communities and Rare, Threatened and Endangered Species, and wetlands (class 1 and 2) and wetland advisory layers.

These areas have been removed and are not shown on this map.

Possible Constraints

Possible Constraints signal conditions that would likely require mitigation, and which may prove a site unsuitable after site-specific study, based on statewide or regional/focal policies that are currently adopted or in effect.

Possible Constraints include: Agricultural soils, FEMA flood areas, Protected Lands, ACT 250 soil mitigation areas, Deer wintering areas, Highest Priority Forest Blocks, and Hydric soils.

These areas are shown on the map where they coincide with areas of renewable wind potential identified in the wind analysis.



This map was created as part of a Regional Energy Planning Initiative with funding from the Vermont Public Service Department.

Wind Potential Analysis under the State Energy Planning Guidelines.

Statewide 30m, 50m, and 70m wind speed layers from Mass.Tech Collaborative were filtered for minimum wind speed, then merged into a single file by VCGI.

