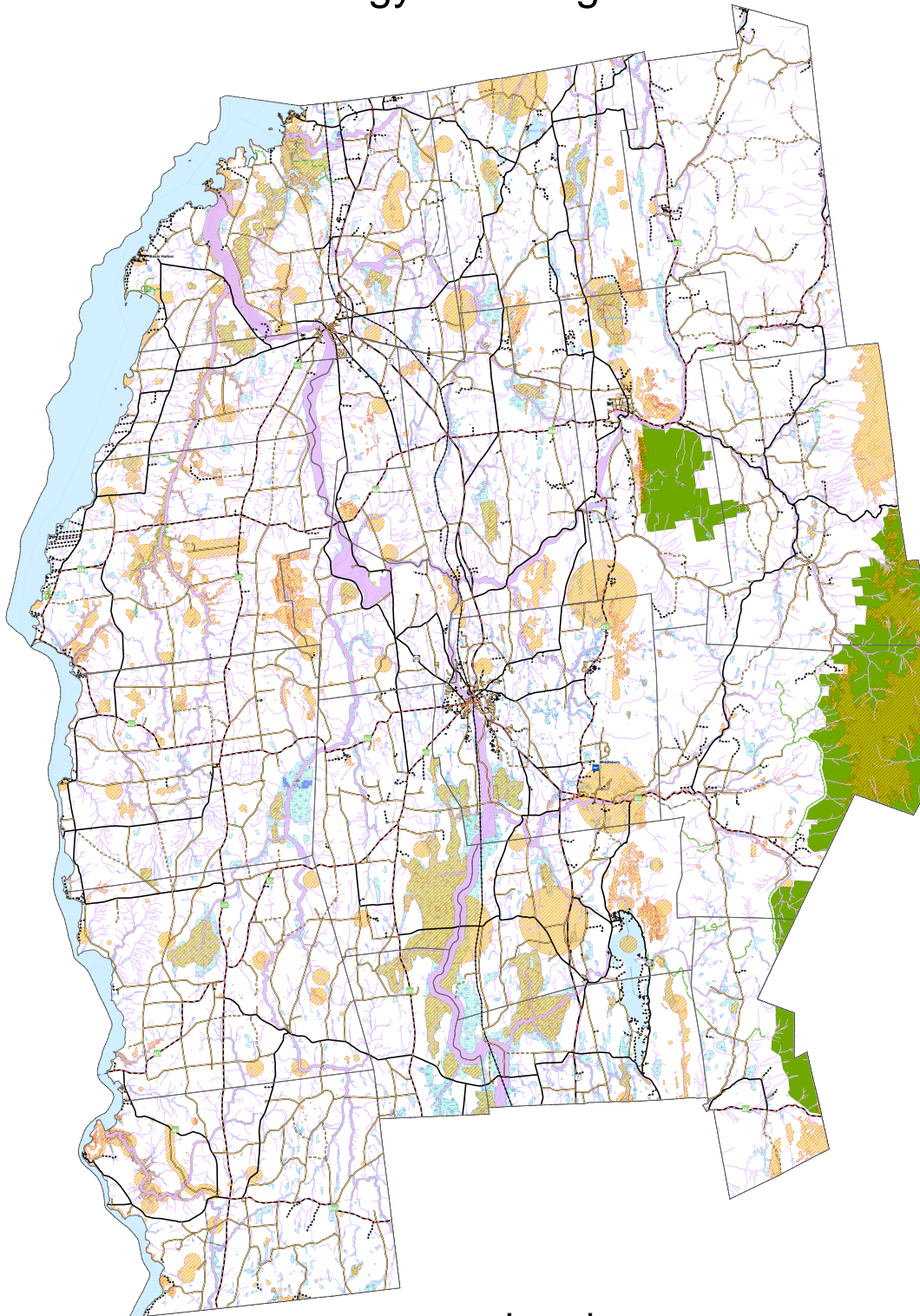


Renewable Energy Planning: Known Constraints



Legend

- Vernal Pools (confirmed and unconfirmed layers)
- State River Corridors (inc 50ft buffers on sm streams)
- FEMA Floodways
- Natural Communities and Rare, Threatened and Endangered
- Vermont Significant Wetlands (Class 1 & 2 and advisory layers)
- National Wilderness Areas

Known Constraints (State Energy Planning Guidelines)

Vernal Pools (confirmed and unconfirmed)
 DEC River Corridors (inc stream 50ft buffer)
 FEMA Floodways
 State Significant natural Communities and
 Rare, Threatened and Endangered Species
 National Wilderness Areas
 Class 1 and Class 2 Wetlands (VSWI and advisory layers)
 Regionally or Locally Identified Critical Resources (none currently)



This map was created as part of a Regional Energy Planning Initiative with funding from the Vermont Public Service Department.