

1. Title and Approval

1. Your Specific Project Under the "VT DEC Laboratory Services Grants Project - 2014" :

ADDISON COUNTY WATER QUALITY MONITORING PROGRAM 2017 (137-01)
(Your Project's Name)

ADDISON COUNTY RIVER WATCH COLLABORATIVE
(Name of Your Organization)

February 28, 2017
(Date)

Project Leader Signature/Date: _____

Project QA Coordinator Signature/Date: _____

Project QAPP Prepared by: VTDEC (w/ 2017 revisions, Kristen Underwood)

Approval by:

Jim Kellogg
VTDEC Project Contact

Date

B. Generic Volunteer-Based Water Quality Monitoring Project QAPP:

Vermont General Quality Assurance Project Plan for Volunteer,
Educational and Local Community Monitoring and Reporting
Activities

(Project Name)

VT Department of Environmental Conservation

(Responsible Agency)

May 1, 2006

(Date)

QAPP Prepared by: Lee Steppacher & Diane Switzer, EPA New England
Modified Neil Kamman, VTDEC.

2. Table of Contents

INSTRUCTIONS: Change page numbers and appendices as needed for your project. Insert information for any pages of additional information you attach (e.g., maps, manuals, written procedures, etc.)		
Section		Page
1.	Title and Approval Pages A. The Specific Project B. Generic Volunteer Based Water Quality Monitoring QAPP	1 2
2.	Table of Contents	3
3.	Distribution List	5
4.	Project/Task Organization 1. VTDEC - Key People and Responsibilities 1. Project Key People and Responsibilities	6
5.	Background of Project	7
6.	Individual Project Purpose/Task Description A. Objectives of Projects B. Intended Uses of Data C. Map of Sampling Sites D. Project Timetable	8
7.	Project Quality Objectives A. Data Precision, Accuracy, Measurement Range Requirements B. Data representativeness C. Data Comparability D. Data Completeness	12
8.	Training Requirements and Certification A. Training Logistical Arrangements B. Description of Training and Trainer Qualifications	16
9.	Documentation and Records	17
10.	Sampling Process Design A. Rationale for Selection of Sampling Sites B. Summary of Sample Collection	17
11.	Sampling & Analysis Methods.	22
12.	Sample Handling and Custody Procedures	24
13.	Analytical Methods Requirements	24

<u>Section</u>		Page
14.	Quality Control Requirements A. Field QC Checks B. Laboratory QC Checks	24
15.	Instrument/Equipment Testing, Inspection and Maintenance Requirements	25
16.	Instrument Calibration and Frequency	27
17.	Inspection/Acceptance Requirements	28
18.	Data Acquisition Requirements	28
19.	Data Management	28
20.	Assessment and Response Actions	29
21.	Reports	29
22.	Data Review, Validation and Verification	29
23.	Validation and Verification	30
24.	Reconciliation with Project Quality Objectives	30
Appendices	(Hard copies of appendices are available from the VTDEC)	
A.	Examples of Acceptable Field Standard Operating Procedures (Field SOPs)	
B.	Examples of Acceptable Field Sheets and LaRosa Laboratory Sample Submission Form	
C.	VTDEC Citizen's Guide to Bacteria Monitoring	

- Attachment 1. Map of ACRWC Sampling Sites – 2017
- Attachment 2. ACRWC Field Data Sheet
- Attachment 3. ACRWC Sampling Site Locations & Rationale – 2017
- Attachment 4. ACRWC Sampling Schedule - 2017

3. Distribution List

1. Names and telephone numbers of those receiving copies of this QAPP.
 - i. Jim Kellogg, VT DEC, Watershed Management Division, Biomonitoring and Aquatic Studies Section, 1 National Life Drive, Main Building, 2nd Floor Montpelier, VT 05602-3522
802-490-6146, Jim.Kellogg@state.vt.us
 - ii. Ethan Swift, VT DEC, Water Quality Division, Monitoring, Assessment, & Planning Program, 450 Asa Bloomer State Office Building, 88 Merchants Row, Rutland, VT 05701-5903
802-786-2503, ethan.swift@state.vt.us
 - iii. Matt Witten, ACRWC Managing Director, 1355 Shaker Hill Road, Starksboro, VT 05487
802-434-3236, mwitten@gmavt.net
 - iv. Kevin Behm, ACRPC, 14 Seminary Street, Middlebury, VT, 05753
802-388-3141, kbehm@sover.net
 - v. Kristen Underwood, South Mountain R&CS, 2852 South 116 Rd, Bristol, VT 05443
802-453-3076, southmountain@gmavt.net

INSTRUCTIONS: please fill in the following section with the names and contact information (i.e., address, phone #, email address) of those involved with your project who should be familiar with your QAPP. This should include the project leader, field/sampling leader and quality assurance leader.

4. Project/Task Organization

A. Table 4a - VT Department of Environmental Conservation - Key People and Their Responsibilities.

Project Title/Responsibility	Name
Project Coordinator for VTDEC	Jim Kellogg
Volunteer Monitoring Coordinator for VTDEC-WQD	Amy Picotte
LaRosa Laboratory Director	T. Guy Roberts
LaRosa Laboratory Supervisor	Dan Needham

B. Table 4b - Key Project People and Their Responsibilities

INSTRUCTIONS: Please fill in the name and affiliation (if not from your organization) of the person that best corresponds to the title and description in the left column. Note that one person may have more than one responsibility and may be listed more than once, however, the person responsible for QA should not be the project leader, if possible. If you are not using a laboratory, put an N/A (Not Applicable) in the name space. Add other key people as needed.

Project Title/Responsibility	Name/Affiliation
Project Leader – directly responsible for all project aspects.	Matt Witten, ACRWC
Project Volunteer Coordinator – responsible for overseeing all of the activities of volunteers, including recruiting, maintaining training and participation records, etc.	Matt Witten, ACRWC
Project Field/Sampling Leader – responsible for training and supervising volunteers in field work, filling out field forms, and performing QC checks to make sure procedures are followed or corrected, as needed.	Matt Witten, ACRWC
Project QA Coordinator – responsible for ensuring that procedures in field and laboratory are performed in accordance with this QAPP and keeps other leaders informed of project status in relation to QAPP. Works with other leaders in conducting QC checks on sampling and analysis techniques. Maintains log of QA and QC checks.	Kristen Underwood, ACRWC
Project Laboratory Contact – makes arrangements with any laboratory that is used to perform sample analysis according to QAPP. Ensures correct procedures are used, holding times are met and laboratory provides complete documentation.	Ethan Swift, VTDEC
Project Data Management Coordinator – Maintains the data systems for the organization, performs data entry, and checks entries for accuracy against field and laboratory forms.	Kristen Underwood, ACRWC

5. Background of LaRosa Volunteer Laboratory Services Grants Project

The Vermont Department of Environmental Conservation (VTDEC), through the LaRosa Analytical Laboratory, has made available to interested lake, river, and watershed associations grants for sample analyses for the upcoming field season. The purpose of this program is to help volunteer associations and monitoring groups to implement new and/or on-going surface water monitoring projects, for waters in need of water quality assessment.

What are laboratory services?

One of the most costly items involved in a monitoring program is laboratory analysis. VTDEC recognizes that the cost of laboratory services hinders the widespread application of volunteer surface water quality monitoring in Vermont. Analytical services provided under this grant program are essentially 'slots' for tests to be run at the LaRosa Laboratory, free of charge to grantees. The LaRosa Laboratory is a full-service analytical facility with complete capabilities for routine water quality monitoring tests. Examples of such tests include: phosphorus, nitrogen, chlorophyll-a, total suspended solids, *E. coli*, turbidity, alkalinity, conductivity, pH, priority pollutants and metals; and numerous other compounds. More information about the LaRosa facility services is available online (internet address below).

Who is eligible?

Volunteer associations across Vermont. Such associations include river, lake, and watershed groups, secondary-level educational groups, and water quality and conservation committees associated with local municipalities. Post-secondary academic institutions and statewide not-for-profit non-governmental organizations are eligible provided that the projects are either: designed jointly with a local association to assess current water quality conditions; or, structured to address a water quality problem of statewide importance.

What are the eligible project types?

Many project types are eligible for this program. Waters under evaluation should be of interest to the local association sponsoring the project, and should also be of interest to VTDEC. Waters of interest to VTDEC include impaired and state priority waters, waters on which minimal or no monitoring has been performed in the past, waters with significant public swimming use, waters where a suspected water quality problem needs further assessment, and waters where the causes of known problems remain undiagnosed. Proposals for projects exceeding one field season in duration will be accepted, although subsequent years will be approved only subject to continued availability of state funding for this program. Please note that participants in this program shall share with VTDEC ownership of all laboratory data produced by individual projects.

6. Individual Project Purpose/Task Description

Attach a map in Part C, to identify waterbodies being sampled and sampling sites. If you are unable to locate sampling sites until the project is initiated, please explain your circumstances below.

Instructions - For parts A and B below, please check the boxes that apply to your project and add specific information as needed. Include all pertinent background information, including a brief summary of previously collected data, that help support the purpose of your project. The summary can either be in table format or a brief narrative.

A. Objectives of Projects

The principal objectives of projects under this QAPP are to 1) provide a perspective on the range of water quality conditions across Vermont; 2) describe water quality conditions of individual waterbodies; 3) establish a database for waterbodies for use in documenting future changes in water quality; and, 4) educate and involve local residents in waterbody protection.

General guidelines for projects under this QAPP are:

- Data should be collected during spring and summer months at regular intervals, but not in severe weather, such as thunderstorms or high winds (safety always comes first). Projects addressing *E. coli* should be designed specifically to address either dry-only weather conditions, or segregate between wet and dry weather conditions. Antecedent weather conditions must be recorded for all *E. coli* sampling events.
- If some data will be collected every week, and other data will only be collected only once during the sample season or appropriate index period (e.g., low flow, high temperature, etc.) such should be noted in Section 10B, Sample Design Logistics, in this QAPP.
- Data will be analyzed, summarized and interpreted on an annual basis. Projects will be required to report to VTDEC at the completion of the project.
- Information should be presented to the local community in a suitable format, be it a press release, public meeting or another event.
- Data that meets project quality objectives may be entered into VTDEC's Water Quality data management system and may also be entered into EPA's national water quality data storage system, STORET.

Instructions: Please place a checkmark beside the uses which are applicable for your project's data.

B. Intended Uses of Data

The data generated by projects under this Generic QAPP will serve at least one of the following uses, as specified in project proposals and workplans.

- Track phosphorus concentrations and/or loadings
- Identify the presence, density and spread of nuisance aquatic species
- Describe water quality conditions at specific locations
- Document the presence and severity of localized problems (e.g. bacteria as pathogen indicators)
- Identify sources of local problems
- Evaluate sedimentation and erosion problems
- Evaluate habitat & embeddedness with regard to aquatic life use
- Educate school children and local communities about water quality, and any problems and improvements.
- Evaluate the effectiveness of restoration projects and other management activities
- _____

The Collaborative will continue with our sentinel and rotational monitoring schedule. In 2017, the Little Otter Creek (LOC) and the New Haven River (NHR) will continue a two-year rotation of more focused study. The number of sites in each watershed has been expanded relative to previous years, in order to revisit rotational sites that have been monitored historically. In addition, three new stations have been added in the headwaters of the LOC watershed to complement five existing sentinel and rotational stations. These new stations are designed to evaluate baseline water quality conditions in a mostly forested Norton Brook tributary as well as upper reaches of the LOC main stem which drain agricultural and developed land uses. Expanded monitoring in the headwaters was called for in the TMDL for Bacteria-impaired Waters (VTDEC, 2011). Five new sites have been added in the NHR watershed: two on West Brook tributary (M10-S1) and three on Muddy Branch (T1). Both tributaries drain developed and agricultural lands and have not been monitored previously. The number of sites in Middlebury River and Otter Creek watersheds has been decreased compared to year 2015, reflecting that these watersheds have now in a sentinel status, along with Otter Creek and Lemon Fair River.

C. Map of Area and Waterbody

For individual projects under this generic QAPP, a map is to be provided here that identifies waterbody and sample sites.

Instructions: Insert the map for your project here.

See Attachment 1 for a map of watersheds and sample sites monitored by the Addison County River Watch Collaborative.

D. Table 6a - Project Timetable

Instructions: Fill in the following table with the correct dates for your project. If your project does not include any of the listed activities, note why. If there are activities not listed, add them to the table. If you have already completed a timetable you may attach it in lieu of this one.

Activity	Projected Start Date	Anticipated Completion Date
Project Planning Meetings	January and February, 2017	
Fill out and submit this QAPP to VTDEC	February 28, 2017	
QAPP Approved by VTDEC	April 1, 2017 or ASAP	
Training Volunteers/Samplers	Train returning and new volunteer samplers – Sat, March 18, 2017 Attend LaRosa Training – 4/7/2017	March 18, 2017
Sampling Begins	Spring: April 5, 2017 Summer: June 7, 2017	
Sampling Ends	September 6, 2017	
Analytical Results Evaluated * Check/Correct Errors Due to Math Miscalculations or Transferring Data from Field/Lab Forms * Confirm Useable Data * Separate Un-useable Data	Ongoing, beginning when sampling results received from LaRosa lab	By Jan 2018
Data Entered into Project Database	Ongoing, beginning when sampling results received from LaRosa lab	Feb 2018
QC Review of Database	Fall 2017	Feb 2018
Data Summarized	EOY 2017	March 2018
Submit Final Report	EOY 2017	Spring 2018
Presentation(s) of Information at Local Meeting (s) or other venue(s)		ongoing

7. Project Quality Objectives

Instructions: Please check to ensure that you can meet the accuracy and precision requirements, and if you cannot please indicate and explain. Check the appropriate boxes on the left for parameters to be sampled in your project. If you plan to use a different field or laboratory method add your information to this table and provide the written procedures when submitting this completed project QAPP.

A. Data Precision, Accuracy, Measurement Range Requirements

Table 7a – Field Analysis Protocols for Water Samples

Parameter	Field Analysis Method	Method Reference ¹	Accuracy ²	Precision ²
Transparency	Secchi Disk	Vermont Lay Monitoring Program Manual, 2000	--	+/- 0.1 meter
Dissolved Oxygen	Winkler Method w/ Azide Modification	<u>Testing the Waters: Chemical & Physical Signs of a River</u> , River Network, 1996	+/- 0.5 mg/l	+/- 0.5 mg/l
Dissolved Oxygen by Meter	DO Meter or multiprobe	<i>Standard Methods for the Examination of Water and Wastewater</i> , 20 ed., 4500-O G. Membrane Electrode Method	+/- 0.5 mg/l	+/- 0.5
X Temperature	Alcohol Thermometer	<u>Testing the Waters: Chemical & Physical Signs of a River</u> , River Network, 1997	+/- 1.0° C	+/- 1.0° C
pH	pH Meter or multiprobe	<i>Standard Methods</i> , etc., 20th ed., 4500-H ⁺ B Electrode Method	± 0.2 S.U	± 0.2 S.U.
Conductivity	Conductivity Meter or multiprobe	<i>Standard Methods</i> , etc., 20th ed., 4500-H ⁺ B Electrode Method	± 0.5%	± 0.5%

Footnotes:

1– An example of methods that meet the precision and accuracy of LCBP projects under this QAPP are listed. Other methods which meet data quality objectives may be used upon approval of the LCBP. The full citations for each of these publications are: APHA, AWWA & WEF. Standard Methods for the Examination of Water and Wastewater, prepared and published jointly by the American Public Health Association, American Water Works Association and Water Environment Federation, 20th ed., 1998
 Behar, Sharon. Testing the Waters: Chemical & Physical Vital Signs of a River, published by River Network, 1997
 Vermont Agency of Natural Resources. Vermont Lay Monitoring Program Manual: 2000, by Water Quality Division, Vermont Dept. of Env. Conservation.

2– Accuracy of field protocols will generally not be measured in the field, but at training and quality control check sessions. Accuracy and Precision measures given are generic. Individual protocols may themselves provide more accurate and precise measures than expressed here.

Table 7b – Laboratory Analysis Protocols for Water Samples :

Parameter	Reporting Limit ^A	Accuracy ^B (% Recovery)	Estimated Precision for Field Duplicates ^C (RPD)	Laboratory Precision (RPD)	Analytical Method Reference ^B
Chlorophyll-a	0.5 ug/l	--	≤15%	10%	EPA 445.0
X Total and dissolved phosphorus	5 µg/l	85-115%	≤30%	15% ^B	<i>Std. Methods</i> (21 st ed.) 4500-P H
X E. coli ^{D, E}	1 MPN /100ml	N/A	125% (<25cfu) 50% (>25 mpn)	125% (<25cfu) 75% (>25 mpn)	<i>Std. Methods</i> (21 st ed.) 9223 (Colilert)
X Total Suspended Solids	1 mg/l	80-120%	≤15%	≤ 15%	<i>Std. Methods</i> (21 st ed.) 2540D
X Turbidity	0.2 NTU	N/A	≤ 15%	≤15%	EPA 180.1
X Alkalinity	1 mg/l	N/A	≤5% (>20 mg/l) <15% (<20 mg/l)	≤5% (>20 mg/l) <15% (<20 mg/l)	<i>Std. Methods</i> (21 st ed.) 2320B
X Total nitrogen (persulfate digestion)	0.1 mg/l	85%-115%	≤20%	≤10%	<i>Std. Methods</i> (21 st ed.) 4500-N C
X Total NOx	0.05 mg/l	85%-110%	≤10%	≤5%	EPA 353.2

(A) - Reporting Limit is the minimum reported value (lowest standard in calibration curve or MDLx3)

(B) - Section 5.0, Vermont Dept. of Conservation Laboratory QA Plan, 1999

(C) - Generated by the analysis of field duplicates

(D) -Section 5.0, Vermont Dept. of Conservation Laboratory QA Plan, 1999

(E) - EPA's New England Regional Laboratory recommends that all samples resulting in Too Numerous To Count (TNTC) growth, defined as greater than 200 colonies on the membrane filter, be recorded as "TNTC."

(F) -As a quality control check on bacteria counts, if two or more analysts are available, each should count colonies on the same membrane plate for about 10% of the samples, and agree on the # of colonies within 10%.

Instructions: For the following sections (B,C,D), which address data representativeness, comparability and completeness, the VTDEC maintains a minimum goal of 80%. On rare occasions a project requires higher goals and this may be a point of discussion during review of your QAPP. If you think your project might be unable to meet the minimum goal, please provide the information in the lines provided below each element.

B. Data Representativeness

Samples collected at locations and depths described in this QAPP will reflect conditions of individual waterbodies and tributaries in Vermont. To ensure representativeness, all samples will be collected, preserved and analyzed according to the procedures in this QAPP, and within the specified holding times. Those results not meeting the project quality objectives of this program will be flagged and reviewed to determine if appropriate quality controls are in place. They should be discussed in the data report and may be excluded from entry into VTDEC's long-term water quality data archive.

C. Data Comparability

All samples for each specific parameter will be collected and analyzed using the respective procedures described in this QAPP to ensure that comparisons between different sample sites, sample dates, depths and projects can be appropriately made.

If a project compares historical data with the data generated under this QAPP, the historical data should have used SOPs that provide the same data quality as defined here.

NOTE: The information in Table 7c – Project Completeness (below) about field samples, and field and lab duplicate samples collected is not needed for the QAPP submission, however please review it so you will be able to submit it at the end of the project.

D. Data Completeness

At least **80%** of the anticipated number of samples will be collected, analyzed and determined to meet data quality objectives for the project to be considered successful. Individual projects may have different completeness goals, which will be presented in the table below. The data report for each project will contain information, similar to that presented below, containing the number of samples meeting the data quality objectives and the resulting calculation of "Percent Complete".

Table 7c - Project Completeness

Parameter	Number of Samples Anticipated			Number of Valid Samples Collected & Analyzed			Percent Complete
	Primary	QC	Total	Primary	QC	Total	
Chlorophyll- <i>a</i>	-	-	-				
Phosphorus	Total	Spring	72	16	88		
		Summer	144	32	176		
		Storm Event	36	12	48		
	Dissolved	Spring	44	12	56		
		Summer	64	16	80		
<i>E. coli</i>	Summer	144	32	176			
	Storm Event	36	12	48			
Total Suspended Solids	Spring	32	8	40			
	Summer	64	16	80			
Transparency			-				
Alkalinity	Summer	-	-	-			
pH			-				
Turbidity	Spring	72	16	88			
	Summer	144	32	176			
	Storm Event	36	12	48			
Total Nitrogen	Spring	40	8	48			
	Summer	80	16	96			
Total Nox	Spring	16	4	20			
	Summer	32	8	40			
Si, dissolved		-	-	-			
Dissolved Oxygen		-	-	-			
Conductivity		-	-	-			
Temperature	Spring/Summer	186					

* Percent Complete = (# of Valid Samples Collected and Analyzed) / (# of Samples Anticipated) * 100
 First number indicates primary samples / Second number indicates QC samples.

8. Training Requirements and Certification

A. Training Logistical Arrangements

Instructions: Make changes as needed to the table below to reflect your project. Note however that what is contained in this table is, for the most part, considered minimal training.

The Project Leader will arrange volunteer training sessions and keep a record of each volunteer's training needs and accomplishments. Project Leaders are encouraged to discuss their training needs with the VTDEC-WQD Volunteer Coordinator.

Table 8a - Training Process

Type of Volunteer Training	Frequency of Training/Certification
Initial Orientation to the Project	Once
Training in Sampling and Analysis	One full training session for each new volunteer & annual refresher training before each sampling season begins New volunteers must also shadow an experienced volunteer for a minimum of 1 event before carrying out solo sampling.
On-site Visit by Project QA Coordinator	Once during sampling season
Other:	

LAKES/PONDS WATER QUALITY– Generally, each Lake/Pond will be sampled for water quality parameters at the deepest spot. For some projects, sampling will take place at the center of the lake, regardless of whether it is the deep hole, depending on the specific purpose of the monitoring event and the parameters being assessed.
If sampling for your project will vary from any of these designs, please describe it below.

Not applicable

RIVERS/STREAM WATER QUALITY – Wadeable stream samples will generally be collected offshore, near the center of the stream. Water quality samples will be taken from just below surface to near bottom. Individual grab samples, composited grab samples or a core sample can be collected from the water column. Specific projects will designate the type of sample, which must be in accordance with quality control requirements and the purpose of each project.

Depending on the bottom substrate, water quality samples from deep rivers should be collected at mid-depth, but no closer than 0.5 meter from the sediment interface. If the substrate is very soft/silty a greater distance may be designated so as not to contaminate the water sample or the sampling device.

Instructions: Please check the types of samples that will be collected for your project. If your sampling method(s) differ from the description, please describe what you intend to do.

For this specific project, the samples will be collected by:

- Individual grab samples that will be analyzed separately
- Time composite samples – the same volume is collected at constant time intervals (e.g., 4 hours apart) at the same site, and combined to form a composite sample for that site
- Core samples – a single sample collected vertically in the water column across a series of depths.

If sampling for your project will vary from this design, please describe it below.

Instructions: Please fill in and modify the following table as appropriate for your project. If you have a separate summary of this information, you can attach it in place of this table.

Table 10a – Overview of Types of Waterbody, Sample Site(s) & Sample Depth(s)

River channel sampling will be conducted in six watersheds: Lewis Creek, New Haven River, Middlebury River, Otter Creek, Little Otter Creek, and Lemon Fair River.

Sample sites and their locations are identified in Attachment 3.

At baseflow, all scheduled sites are wadeable. At moderate to high flows, some sites are considered deep-water. At each site, volunteers will strive to collect the grab sample from the thalweg (deepest part of the channel), about one foot below the surface (unless this depth is too close to the bottom of the channel and would stir up sediments, in which case the sample would be collected mid-depth). Volunteers will access the thalweg by wading directly into the channel, taking care to minimize disturbance of bottom sediments, and will collect the sample from upstream of their position. If flow or other conditions render wading unsafe, volunteers will utilize a pole sampler to sample a position in the channel cross section that is as close as possible to the thalweg. The pole will be extended to plunge the sampling vessel into the water column to fill the vessel at a point as close as possible to one foot below the surface.

B. Summary of Sample Collection

Individual projects will identify the number of samples, sampling frequency and specific sampling method for each parameter in accordance with their objectives. During sample collection, all sample apparatuses are to be rinsed 3x in sample water prior to collection of the actual sample. Filtration apparatuses and bottle rinse guidelines are shown in Table 11a. **(See Attachment 4 – ACRWC Sampling Schedule – 2017).**

Table 10b – Sample Collection

	Type of Sample/ Parameter	Total Number of Samples (Indicate if this is for the project or per week, etc.)	Sampling Frequency (How often – once/weekly/bi- weekly?)	Sampling Method (Grab, Discrete- depth sampler, depth-integrating core sampler, meter)*
Biological	<i>E. coli</i>			
Chemical	Chlorophyll-a			
	Total and Dissolved Phosphorus			
	Transparency			
	Dissolved Oxygen			
	Temperature			
	pH			
	Alkalinity			
	Total Nitrogen (oersulfate digestion)			
	Total NOx			
	Si, dissolved			
Physical	Secchi Disk Transparency			
	Total Suspended Solids			
	Turbidity			
Meters used for data collection (please list make/model of meter(s) or multiprobe(s))	Multiprobe model:			
	pH meter model:			
	Conductivity meter model:			
	Turbidity meter model:			
	DO meter model:			

*) see Appendix A, please list sampler type (e.g., Kemmerer, Van Dorn, Hose etc.).

11. Sampling & Analysis Methods

Field and laboratory analytical methods are provided in Section 7, and Field Sampling Methods are listed in Section 10 and in Appendix A. The table below presents containers, preservation and holding times used for projects under this QAPP.

INSTRUCTIONS: If your sampling methods are listed in Appendix A, please list the specific protocols you are using in the table above. If your sampling protocol is different from the descriptions in Sections 7 and 10 or the examples in Appendix A, please attach your protocol(s) to this QAPP.

Check off the appropriate parameters in the table below.

Table 11a –Sample Containers, Preservation & Holding Times ^A

Parameter/Measure	Container	Field Rinse	Preservation	Hold Time ^B
<input checked="" type="checkbox"/> Total / Dissolved Phosphorus	75 ml glass tube, w/ Teflon cap. ^C	NO RINSE, 3X rinse of filtration apparatus w/ sample water or DI	Cool to 4°C. Dissolved phosphorus filtered using <i>new</i> 0.45 μ filter membrane	28 day
<input checked="" type="checkbox"/> <i>E. coli</i>	200ml sterile plastic round	NO RINSE	Cool to 4°C	6 hour
Chlorophyll-a	Filter - Gelman GF-F, 47mm diam.	NO RINSE of filter, 3X Rinse of filtration apparatus w/ sample water or DI	Freeze, Dark	21 day
<input checked="" type="checkbox"/> Total Suspended Solids	1 liter plastic, round	3x rinse with sample	Cool to 4°C	7 day
<input checked="" type="checkbox"/> Turbidity	250 ml plastic square	3x rinse with sample	Cool to 4°C	48 hour
<input checked="" type="checkbox"/> Total Nitrogen (oersulfate digestion)	50 ml polycarbonate centrifuge tube	3x rinse with sample	Cool to 4°C, acidified within 48h with conc. H ₂ SO ₄ to pH <2	28 day
<input checked="" type="checkbox"/> Total NOx	125 ml plastic square	3x rinse with sample	Cool to 4°C, acidified within 24h with conc. H ₂ SO ₄ to pH <2	28 day
Si, dissolved	50 ml polycarbonate centrifuge tube	3x rinse with filtrate or with DI	Cool to 4°C, filtered using <i>new</i> 0.45 μ filter membrane	28 day
Alkalinity	250 ml plastic square	3x rinse with sample	Cool to 4°C	14 day
DO - Meter	(<i>in situ</i>)	3x rinse of probe	None	Direct Analysis

Parameter/Measure	Container	Field Rinse	Preservation	Hold Time ^B
pH Meter	<i>(in situ)</i>	3x rinse of probe	None	Direct Analysis
X Temperature - Thermometer ^D or meter	<i>(in situ)</i>	NO RINSE	None	Direct Analysis
Conductivity meter	<i>(in situ)</i>	3x rinse of probe	None	Direct Analysis
Turbidity meter	<i>(in situ)</i>	3x rinse of probe	None	Direct Analysis

Footnotes:

A – A copy of some field SOPs are attached as Appendix A.

B – Holding times are in accordance with the Code of Federal Regulations, title 40 (Protection of Environment), part 136, section 3 (or 40CFR136.3), and are defined in the VTDEC LaRosa Laboratory Quality Assurance Project Plan.

C – The VT DEC analyzes the entire sample volume in the sampling container, so no acidification is needed. Extra containers of sample will be needed to allow the VT DEC lab to analyze spiked samples.

D – **Mercury thermometers absolutely shall not be used in the field.**

12. Sample Handling and Custody Procedures

Instructions: Please attach copy of your project specific field sampling form here.

All samples collected in conjunction with the project will be accompanied by a field sampling form identifying at minimum the sample location, date, time, and collector. In addition, a laboratory sample submission form must accompany all samples submitted to the laboratory. Sample field forms, and a laboratory submission form, are in Appendix B.

13. Analytical Methods Requirements

Information for this section is included in Tables 7a and 7b.

14. Quality Control Requirements

Instructions: For sections A, B, and C, check only those that are applicable to your project. The goal for quality control checks is 10% replication and blank analysis. Please note if your goal varies from this.

A. Field QC Checks

At least one (1) Field Duplicate and one (1) Field Blank will be submitted for every tenth (10th) sample collected. Additional types of field quality control samples needed will depend on the parameter and the collection method, and are at the discretion of the Project Field/Sampling Leader and Project QA Coordinator.

- X Field Duplicate (required)** – a check on water quality, sampling & analysis consistency. This is a replicated sample collected at the same point in time and space so as to be considered identical. A field duplicate is a second sample from a second sampling event, collected immediately after the first sampling. Otherwise put, these separate samples are said to represent the same population and are carried through *all steps* of the sampling and analytical procedures in an identical manner. They are used to assess precision of the total method, including sampling, analysis, and site heterogeneity.
- X Field Blanks (required)** – This checks for contamination (Accuracy/Bias) in the field, by processing laboratory-supplied de-ionized water through the sampling train. This checks for contamination introduced from the laboratory-supplied sample container(s) or from field sources.
- X Matrix Spike (required only for phosphorus)** - This allows the laboratory to perform analytical replication that separates variability in sampling from variability in analytical processing. A spike is a second sample bottle, filled from the same sample collection as the first sample. For grab samples, there is no functional difference between a field duplicate and a matrix spike.
- Equipment Blanks** – measures contamination (accuracy/bias) – a sample of water, free of measurable contaminants is poured over or through decontaminated field sampling equipment that is considered ready to collect or

process an additional sample. The purpose of this is to assess the adequacy of the decontamination process and whether equipment needs special cleaning to make sure it doesn't have something that contaminates the sample or influence the results.

- **Field Split Samples** – Two or more representative subsamples are taken from one environmental sample in the field and sent to two different labs for analysis. Prior to splitting, the environmental sample is well-mixed to correct for sample inhomogeneity that would adversely impact sample data comparability. Field splits are used to assess sample handling procedures from field to laboratory and interlaboratory comparability and precision.

- **Equipment Calibration Checks** – A check on a meter's accuracy – the verification of the initial calibration that is required at certain times during the sampling day or while analyzing a large number of samples. Checking to see if a pH meter is maintaining its calibration would involve taking a reading of standard solutions (e.g., pH buffers of 4, 7, or 10, etc.)

For projects that include long term repetitive sampling at several sites, the site at which a field quality control sample is collected may change so there may be at least one duplicate sample at each sample location during the course of the project.

B. Laboratory QC Checks

Laboratory QC samples may include any of the following, depending on the parameter, and are handled by the LaRosa Laboratory as described in the LaRosa Laboratory Quality Assurance Plan.

15. Instrument/Equipment Testing, Inspection, and Maintenance Requirements

The Project QA Coordinator is responsible for ensuring equipment and instruments are maintained according to standard operating procedures and manufacturer requirements. In preparing for a sampling event, equipment will be inspected and tested by the sampler prior to its intended use. A maintenance log will be maintained by the Project QA Coordinator for all mechanical and electronic equipment. Any equipment that does not meet the requirements necessary for producing data in accordance with the data quality objectives of specific projects, will not be used for sample collection or analysis. Additional equipment (non-mechanical and non-electrical), including pole samplers, buckets, rope, thermometers etc. should be maintained according to the standard operating procedure.

Table 15a - Equipment for Project

Equipment Type	Manufacturer	Inspection Frequency	Type of Inspection
DO Meter	See Table 10b		
Multiprobe model:			
pH meter model:			
Conductivity meter model:			
Turbidity meter model:			
GPS Unit			
Flow Meter			

16. Instrument Calibration and Frequency

Instructions: Please complete the table below.

The Project Leader will ensure that all field instruments are checked for good working order prior to the day of sample collection, preferably at least 24 hours prior to sampling. On the day of sample collection, or on a routine schedule as defined below, equipment will be calibrated and checked for accuracy before any samples are collected in accordance with the standard operating procedures. The recalibration of meters will be verified by recording each meter's reading of a standard used (or against a calibration instrument). If the amount of drift in instrument readings is not acceptable, data will be flagged as suspect. Calibration checks and readings of standards will be recorded on field sheets or another form set up for that purpose. All documentation regarding instrument calibration will be maintained by the Project Leader or their designated individual.

Table 16a - Equipment Calibration

Equipment Type	Calibration Frequency	Standard or Calibration Instrument Used
Alcohol Thermometer	Before each sample event	Ice bath
USGS Pygmy Current Meter	Before and after each day's use	Spin test per manufacturer's instructions.
pH meter	Before each day's use	per manufacturer's instructions.
Conductivity meter	Before each day's use	per manufacturer's instructions.

17. Inspection/Acceptance Requirements

The Project Leader will ensure that all equipment, instruments and supplies are clean and maintained according to the standards and conditions required to meet project objectives. Sample containers will be of the appropriate size, pre-cleaned for the parameter for which the sample will be analyzed, and supplied by the LaRosa laboratory. Appropriate containers must be used. Containers that are not supplied by the LaRosa laboratory are considered suspect and samples will be rejected, unless lot certification of bottles is provided along with the sample submission. Other materials, such as pole samplers, nets, gloves, rinse bottles, sampling apparatus, buckets, line, etc., will be kept clean and stored properly so as to prevent contamination that interferes with producing samples and analytical results that meet project objectives.

18. Data Acquisition Requirements

External data (data that is not generated by the project but is to be used as part of the project - e.g., meteorological data, flow data) will be used in accordance with the objectives stated in Section 6B of this QAPP, and should have sufficient documentation that it is at least equivalent to the data quality generated as part of this project (see Section 7).

19. Data Management

The generation of accurate data with accompanying documentation, such as field sheets and quality control sample results, is the responsibility of the individual Project Field/Sampling Leader. On a daily basis, field data sheets are inspected and signed by the people performing the sampling before leaving a site or completing a sampling "run". Field sheets are given to the Project Field/Sampling Leader after the sampling event for review. Within 72 hours, the Leader will contact any sampler(s) whose field sheets contain significant errors or omissions.

The lab manager reviews analytical results, and identifies questionable data with regard to results or documentation, as described in the LaRosa Laboratory QA Plan. The Project Leader and the Project QA Coordinator review all field and lab data to determine usability in the project.

All environmental data generated by projects funded by VTDEC under this project will be submitted to the VTDEC in a commonly used format (such as Microsoft EXCEL[®] or ACCESS[®]) and may be uploaded to STORET, the national water quality data storage system.

The data generated under the laboratory services grants project is the joint property of the VTDEC and the project leads.

20. Assessment and Response Actions

For each project funded, there will be an on-site visit by the Project Leader or Project QA Coordinator to observe field sampling and field analysis procedures. Generally, this will be done near the beginning of the project. This is in addition to training procedures described in Section 8. A written checklist should be used for the assessments, maintained by the Project Leader, and copies will be provided with the data report. The Project Leader and Project QA Coordinator will determine if field work follows the written procedures or if corrective action is necessary, including additional training or protocol revisions. Please refer to Section 22 for additional evaluations and response actions regarding data evaluations.

21. Reports

Written final project reports will be submitted to the VTDEC for all funded projects. These need not be excessively long, but should document data results, quality assurance findings, and any specific local actions suggested by the data results. The reports may vary in content according to the type of project and the expected uses of the information. VTDEC strongly encourages project leads to plan at least one presentation of their project and its results to the local community.

In addition to a written report, data and metadata (information about the data) will be provided as described in Section 19 above and Sections 22 through 24 below.

22. Data Review, Validation, and Verification

All data are reviewed by the individual Project Leader, Project QA Coordinator and Project Data Management Coordinator to determine if data meet QAPP requirements.

Data Analysis QC Checks will include:

- Data entry checks by a second person
- Calculation of measures of data quality.

To validate and verify project data, the Project QA Coordinator will compare computer entries to field or laboratory data sheets; look for data gaps and unexpected, or nonsensical results; inspect field forms and information; review field quality control checks and resulting information; and review graphs, tables and other presentations of data, as needed. Graphing data results with time, by parameter, is a useful way to observe problem data points (i.e., outliers).

Errors in data entry will be corrected. Data that are outside the expected range will be flagged for further review, or rejected. A second field sample and/or laboratory aliquot will be taken, if possible, to verify the condition and a determination of necessary corrections, if any, will be made. VTDEC should be contacted if assistance is needed to identify sources of errors. Problems with data quality will be discussed in the draft and

final reports to the VTDEC. The Percent Complete table presented in Section 7 will be filled in and included with the data report.

23. Validation and Verification Methods

The following simple measures of data quality should be calculated, and included in the final report:

1) To screen for contamination, the average blank concentration, by parameter, should be calculated. This average value should be as close as practical to the Reporting Limit listed in Table 7b.

2) To assess the precision of results, the “Mean Relative Percent Difference” between field duplicate samples should be calculated. The average RPD should be less than or equal to the Estimated Precision listed in Table 7b. This simple measure is calculated as follows:

$$RPD_{\text{field duplicate pair 1}} = \text{absolute value (sample}_1 - \text{sample}_2) / \text{average (sample}_1 \text{ and sample}_2);$$

and,

$$\text{The Mean RPD for “n” duplicate pairs} = \text{average (RPD}_{\text{pair 1}} + \text{RPD}_{\text{pair 2}} + \dots + \text{RPD}_{\text{pair n}})$$

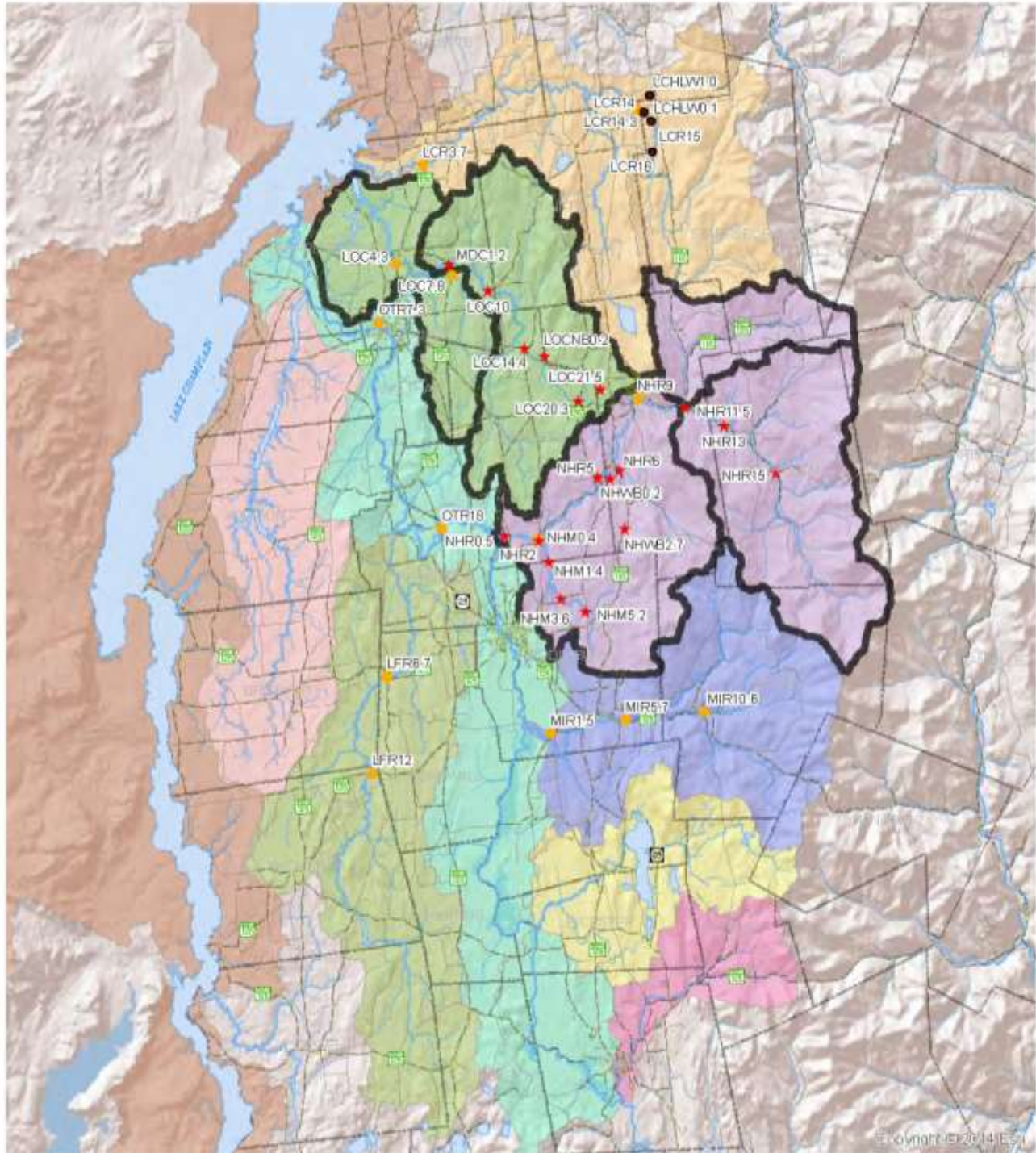
24. Reconciliation with Project Quality Objectives (PQOs)

As indicated above, mean blank concentrations and mean relative percent differences will be compared to data quality objectives established in Table 7b.

Hard copies of Generic QAPP Appendices are available from the VTDEC.

Addison County River Watch Collaborative

Water Quality Monitoring Sites by Watershed, 2017



- | | | | | |
|---|-------------------------------|--------------|-------------------------|--------------------|
| ★ Rotational Site | Rotational Basins 2017 | Roads | ■ Lake Champlain Direct | ■ Dead Creek |
| ● Sentinel Site | ■ Little Otter Creek | — Pavement | ■ Lewis Creek | ■ Lemon Fair River |
| ● Special Project Site (E. coli monitoring) | ■ New Haven River | — Gravel | ■ Little Otter Creek | ■ Leicester River |
| | | | ■ Otter Creek | ■ Middlebury River |
| | | | ■ New Haven River | ■ Neshobe River |



The Addison County River Watch Collaborative is a citizen organization that monitors and assesses the condition and use of our local rivers over the long term, raises public awareness of the values and functions of our watersheds, and cultivates partnerships that support water quality stewardship.

VTDEC/Addison County River Watch Collaborative Field Data Sheet

Sample submitted by: Addison County River Watch Collaborative	ACRWC Contact: Matt Witten	Date Samples Collected:
Lab Report to: Kellogg, Swift	Phone: 802-434-3236 ACRPC: 802-388-3141	Chain of Custody: (sign/date)
Program #: 137 Activity Code #: 1	Email: mwitten@gmavt.net	

Samplers' Names	Previous 3 days weather	Today's weather

See codes below

Analysis Requested

DEC log-in code	Sample ID	Type	Sample Time	Air temp	H2O temp	Water Level	Water Color	% Algal growth	TP	(filtered) DP*	TSS	Turb	Ecoli	TN	NOX	Comments
		DUP = duplicate BLK = Blank SPK = Lab Spike				<u>H2O Level:</u> a) Very low b) Low c) Medium d) High e) Very high	<u>H2O Color:</u> a) Clear b) Cloudy c) Foam d) Muddy (brown) e) Silty (gray) f) tea g) Green h) Un-natural	<u>Algal growth:</u> < 25% 25- 50% 50-75% > 75%	*TP is the same as "digested" and DP is the same as "filtered/digested"							

Project Name: Addison County River Watch Collaborative											
Project Number: 137-01											
Sample Year: 2017			Trend Mon	Trend Mon	Treat.	Recreation	Load-ing				
Type	River Name	Site ID	Site Location	Temporal	Spatial	Effect.	Safety	Est.	Site Lat	Site Lon	Site Comments/Rationales
S	Lewis Creek	LCR3.7	Old Route 7 Bridge	✓					44.247953	-73.231202	Downstream of US Rt 7; near USGS streamflow gage
S	Lewis Creek	LCR14	Tyler Bridge	✓		✓	✓	✓	44.277097	-73.081485	Swimming/ recreation site; d/s from farms. Hollow Bk
O	Hollow Bk (Lewis Ck)	LCHLW1.0	Tyler Bridge Rd Xg of Hollow Bk		✓	✓		✓	44.283820	-73.072670	E.coli bracket monitoring site
O	Hollow Bk (Lewis Ck)	LCHLW0.1	Hollow Brook at Confl w/ Lewis		✓	✓		✓	44.275490	-73.076560	E.coli bracket monitoring site
O	Lewis Creek	LCR14.3	Just above confluence of Hollow Bk		✓	✓		✓	44.275330	-73.076870	E.coli bracket monitoring site
O	Lewis Creek	LCR15	Just above Clifford stabilized crossing		✓	✓		✓	44.270820	-73.071500	E.coli bracket monitoring site
O	Lewis Creek	LCR16	LaRue bridge crossing		✓	✓		✓	44.255600	-73.070380	E.coli bracket monitoring site
S	Lemon Fair River	LFR6.7	Route 125 bridge.	✓					43.990959	-73.252514	Former cropland/pasture w/ minimal riparian buffer; sentinel station.
S	Lemon Fair River	LFR12	Downstream of Route 74 bridge	✓					43.942435	-73.262336	Downstream of former pasture/cropland; sentinel station
S	Little Otter Creek	LOC4.3	Route 7 Bridge	✓	✓				44.198145	-73.249263	At US Rt 7; site of USGS streamflow gaging station
R	Little Otter Creek	LOC7.8	Middlebrook Rd (North)		✓				44.198815	-73.212174	Site downstream from a farm
R	Little Otter Creek	LOC10	Monkton Road		✓				44.18581	-73.18492	Downstream of wetland complexes with agriculture.
R	Little Otter Creek	LOC14.4	Plank Rd.		✓	✓			44.157109	-73.15892	Upstream of several farms
R	Norton Brook	LOCNB0.2	Norton Brook		✓	✓			44.152920	-73.145110	Evaluate forested catchment
R	Little Otter Creek	LOC20.3	Sawyer Road Bridge		✓	✓			44.130637	-73.120947	Downstream of farming; upstream of large wetland complex
R	Little Otter Creek	LOC21.5	Kilbourn property		✓	✓			44.136786	-73.105935	Baseline data; upstream end of watershed
S	Mud Creek	MDC1.2	Wing Rd./Middlebrook Rd. (South)	✓	✓				44.192534	-73.210043	Just upstream of mouth of Mud Creek; downstream of dairy pasture
S	Middlebury River	MIR1.5	Shard Villa Road Bridge	✓			✓		43.963134	-73.138246	Recreation Site
S	Middlebury River	MIR5.7	Midd. Gorge @ Rte 125 Bridge	✓			✓		43.970260	-73.086273	Recreation Site; Upstream of E. Middlebury Village
S	Middlebury River (Midd Br)	MIR10.6	Natural Turnpike Road	✓					43.974927	-73.032350	Representative of upper watershed
R	New Haven River	NHR0.5	Dog Team Tavern		✓		✓		44.062478	-73.171918	Swimming and recreation site
S	New Haven River	NHR2	Muddy Branch confluence (just below)	✓	✓				44.060634	-73.148449	Bracket Muddy Branch tributary
R	Muddy Branch	NHM0.4	Just above confluence at Nash Fm		✓	✓			44.06068	-73.14754	Assess Contribution of Muddy Branch
R	Muddy Branch	NHM1.4	Halpin Covered Bridge Rd		✓	✓			44.050119	-73.140737	Baseline data to Assess Contribution of Muddy Branch
R	Muddy Branch	NHM3.6	Painter Road crossing		✓	✓			44.031190	-73.132090	Baseline data to Assess Contribution of Muddy Branch
R	Muddy Branch	NHM5.2	Munger Road crossing		✓	✓			44.025281	-73.114807	Baseline data to Assess Contribution of Muddy Branch
R	New Haven River	NHR5	New Haven Mills / Munger St Bridge		✓		✓		44.092390	-73.107400	Swimming and recreation site
R	West Brook	NHWB0.2	Cove Road crossing		✓	✓			44.091796	-73.098560	Baseline data to Assess Contribution of West Brook
R	West Brook	NHWB2.7	Rt 116 below Elephant Mtn Campground		✓	✓			44.066761	-73.088333	Baseline data to Assess Contribution of West Brook
R	New Haven River	NHR6	Route 116 Bridge, Sycamore Park		✓		✓		44.096148	-73.092454	Swimming and recreation site
S	New Haven River	NHR9	South St. Bridge	✓	✓		✓		44.131417	-73.079891	100 yds. below downtown Bristol's septic system
R	New Haven River	NHR11.5	Bartlett's Falls Pool		✓		✓		44.127648	-73.046841	State-significant swimming and recreation site
R	New Haven River	NHR13	York Hill Rd Bridge		✓		✓		44.118900	-73.019730	Development & septic systems
R	New Haven River	NHR15	Garland's Bridge - Gap Road		✓		✓		44.095370	-72.982860	Swimming and recreation site
S	Otter Creek	OTR7.3	Vergennes Falls / below outfall	✓					44.168667	-73.260904	E.coli testing at the request of Vergennes Town Manager to monitor E.coli upstream and downstream of sewage treatment plant.
S	Otter Creek	OTR18	Twin Bridges Picnic Area	✓					44.065573	-73.215858	Accessible site downstream of Midd. Sewage Treatment Plant. Upstream of Lemon Fair River confluence.

Project Name: Addison County River Watch Collaborative

Project Number: 137-01

Sample Year: 2017

				Spring Schedule (Apr, May)						Summer Schedule (Jun, Jul, Aug, Sep)						
Type	River Name	Site ID	Site Location	TP	DP	TN	NOX	Turbidity	TSS	PARAMETERS						
										E.coli	TP	DP	TN	NOX	Turbidity	TSS
S	Lewis Creek	LCR3.7	Old Route 7 Bridge	X				X		X	X				X	
S	Lewis Creek	LCR14	Tyler Bridge	X	X	X		X		X	X	X	X		X	
O	Hollow Bk (Lewis Ck)	LCHLW1.0	Tyler Bridge Rd Xg of Hollow Bk	X	X	X		X		X	X	X	X		X	
O	Hollow Bk (Lewis Ck)	LCHLW0.1	Hollow Brook at Confl w/ Lewis	X	X	X		X		X	X	X	X		X	
O	Lewis Creek	LCR14.3	Just above confluence of Hollow Bk	X	X	X		X		X	X	X	X		X	
O	Lewis Creek	LCR15	Just above Clifford stabilized crossing	X	X	X		X		X	X	X	X		X	
O	Lewis Creek	LCR16	LaRue bridge crossing	X	X	X		X		X	X	X	X		X	
S	Lemon Fair River	LFR6.7	Route 125 bridge.	X	X			X	X	X	X	X			X	X
S	Lemon Fair River	LFR12	Downstream of Route 74 bridge	X	X			X	X	X	X	X			X	X
S	Little Otter Creek	LOC4.3	Route 7 Bridge	X	X	X		X	X	X	X	X	X		X	X
R	Little Otter Creek	LOC7.8	Middlebrook Rd (North)	X	X	X		X	X	X	X	X	X		X	X
R	Little Otter Creek	LOC10	Monkton Road	X	X	X		X	X	X	X	X	X		X	X
R	Little Otter Creek	LOC14.4	Plank Rd.	X	X	X		X	X	X	X	X	X		X	X
R	Norton Brook	LOCNB0.2	Norton Brook	X	X	X		X	X	X	X	X	X		X	X
R	Little Otter Creek	LOC20.3	Sawyer Road Bridge	X	X	X	X	X	X	X	X	X	X	X	X	X
R	Little Otter Creek	LOC21.5	Kilbourn property	X	X	X	X	X	X	X	X	X	X	X	X	X
S	Mud Creek	MDC1.2	Wing Rd./Middlebrook Rd. (South)	X	X	X		X	X	X	X	X	X		X	X
S	Middlebury River	MIR1.5	Shard Villa Road Bridge	X				X		X	X				X	
S	Middlebury River	MIR5.7	Midd. Gorge @ Rte 125 Bridge	X				X		X	X				X	
S	Middlebury River (Midd Br)	MIR10.6	Natural Turnpike Road	X				X		X	X				X	
R	New Haven River	NHR0.5	Dog Team Tavern	X				X		X	X				X	
S	New Haven River	NHR2	Muddy Branch confluence (just below)	X				X		X	X				X	
R	Muddy Branch	NHM0.4	Just above confluence at Nash Fm	X	X	X	X	X	X	X	X	X	X	X	X	X
R	Muddy Branch	NHM1.4	Halpin Covered Bridge Rd	X	X	X	X	X	X	X	X	X	X	X	X	X
R	Muddy Branch	NHM3.6	Painter Road crossing	X	X	X	X	X	X	X	X	X	X	X	X	X
R	Muddy Branch	NHM5.2	Munger Road crossing	X	X	X	X	X	X	X	X	X	X	X	X	X
R	New Haven River	NHR5	New Haven Mills / Munger St Bridge	X				X		X	X				X	
R	West Brook	NHWP0.2	Cove Road crossing	X	X	X	X	X	X	X	X	X	X	X	X	X
R	West Brook	NHWP2.7	Rt 116 below Elephant Mtn Campground	X	X	X	X	X	X	X	X	X	X	X	X	X
R	New Haven River	NHR6	Route 116 Bridge, Sycamore Park	X				X		X	X				X	
S	New Haven River	NHR9	South St. Bridge	X				X		X	X				X	
R	New Haven River	NHR11.5	Bartlett's Falls Pool	X				X		X	X				X	
R	New Haven River	NHR13	York Hill Rd Bridge	X				X		X	X				X	
R	New Haven River	NHR15	Garland's Bridge - Gap Road	X				X		X	X				X	
S	Otter Creek	OTR7.3	Vergennes Falls / below outfall	X				X		X	X				X	
S	Otter Creek	OTR18	Twin Bridges Picnic Area	X				X		X	X				X	
Total # sites per event				36	22	20	8	36	16	36	36	22	20	8	36	16

Project Name: Addison County River Watch Collaborative

Project Number: 137-01

Flow Study (pending storm events)

Sample Year: 2017

PARAMETERS

Type	River Name	Site ID	Site Location	<i>E.coli</i>	TP	DP	TN	Turbidity	TSS
S	Lewis Creek	LCR3.7	Old Route 7 Bridge						
S	Lewis Creek	LCR14	Tyler Bridge	X	X			X	
O	Hollow Bk (Lewis Ck)	LCHLW1.0	Tyler Bridge Rd Xg of Hollow Bk	X	X			X	
O	Hollow Bk (Lewis Ck)	LCHLW0.1	Hollow Brook at Confl w/ Lewis	X	X			X	
O	Lewis Creek	LCR14.3	Just above confluence of Hollow Bk	X	X			X	
O	Lewis Creek	LCR15	Just above Clifford stabilized crossing	X	X			X	
O	Lewis Creek	LCR16	LaRue bridge crossing	X	X			X	
S	Lemon Fair River	LFR6.7	Route 125 bridge.						
S	Lemon Fair River	LFR12	Downstream of Route 74 bridge						
S	Little Otter Creek	LOC4.3	Route 7 Bridge						
R	Little Otter Creek	LOC7.8	Middlebrook Rd (North)						
R	Little Otter Creek	LOC10	Monkton Road						
R	Little Otter Creek	LOC14.4	Plank Rd.						
R	Norton Brook	LOCNB0.2	Norton Brook						
R	Little Otter Creek	LOC20.3	Sawyer Road Bridge						
R	Little Otter Creek	LOC21.5	Kilbourn property						
S	Mud Creek	MDC1.2	Wing Rd./Middlebrook Rd. (South)						
S	Middlebury River	MIR1.5	Shard Villa Road Bridge						
S	Middlebury River	MIR5.7	Midd. Gorge @ Rte 125 Bridge						
S	Middlebury River (Midd	MIR10.6	Natural Turnpike Road						
R	New Haven River	NHR0.5	Dog Team Tavern						
S	New Haven River	NHR2	Muddy Branch confluence (just below)						
R	Muddy Branch	NHM0.4	Just above confluence at Nash Fm						
R	Muddy Branch	NHM1.4	Halpin Covered Bridge Rd						
R	Muddy Branch	NHM3.6	Painter Road crossing						
R	Muddy Branch	NHM5.2	Munger Road crossing						
R	New Haven River	NHR5	New Haven Mills / Munger St Bridge						
R	West Brook	NHWB0.2	Cove Road crossing						
R	West Brook	NHWB2.7	Campground						
R	New Haven River	NHR6	Route 116 Bridge, Sycamore Park						
S	New Haven River	NHR9	South St. Bridge						
R	New Haven River	NHR11.5	Bartlett's Falls Pool						
R	New Haven River	NHR13	York Hill Rd Bridge						
R	New Haven River	NHR15	Garland's Bridge - Gap Road						
S	Otter Creek	OTR7.3	Vergennes Falls / below outfall						
S	Otter Creek	OTR18	Twin Bridges Picnic Area						

Total # sites per event

6 6 0 0 6 0