

ADDISON COUNTY FY22 TOWN HIGHWAY BRIDGE PRIORITIZATION

VTrans has provided a list to ACRPC of eighty-nine town highway bridges throughout Addison County for prioritization. Below are the top fifteen of the eighty-nine bridges provided that the TAC is tasked with prioritizing for potential submission with the FY2022 Capital Program. This list includes all town highway long structures that are not currently projects on the VTrans Capital Program. The TAC's top ten projects are due to VTrans no later than March 31st.

DEFINITIONS:

Overall Rank: ranking against all bridges across the state.

Overall Rank by Program: ranking within the Town Highway Bridge Program. The bridges below to be prioritized by the TAC are ordered based upon this ranking.

Modified Program Rank: incorporates the TAC's town highway bridge rankings from the previous year.

Condition Ratings (Deck, Super-structure, Sub-structure):

0. **Failed Condition.** Out of service – beyond corrective action.
1. **"Imminent" Failure Condition.** Major deterioration or section loss present in critical structural components or obvious vertical or horizontal movement affecting structure stability. Bridge is closed to traffic but corrective action may put back in light service.
2. **Critical Condition.** Advanced deterioration of primary structural elements. Unless closely monitored it may be necessary to close the bridge until corrective action is taken.
3. **Serious Condition.** Section loss, deterioration, spalling or scour have seriously affected primary structural components. Local failures are possible.
4. **Poor Condition.** Advanced section loss, deterioration or scour.
5. **Fair Condition.** All primary structural elements are sound but may have minor section loss, cracking, spalling or scour.
6. **Satisfactory Condition.** Structural elements show some minor deterioration.
7. **Good Condition.** Some minor problems.
8. **Very Good Condition.** No problems noted.
9. **Excellent Condition.**

Deck: directly carries traffic

Super-structure: supports the deck and connects one substructure element to another

Sub-structure: supports the superstructure and distributes all bridge loads to below-ground bridge footings

ADDISON COUNTY FY22 TOWN HIGHWAY BRIDGE PRIORITIZATION

LINCOLN – SUGAR BUSH HILL ROAD – BRIDGE 47

Overall Rank by Program	78
Modified Program Rank (with THB RPC Rank)	146
RPC Pre-Candidate Ranking	N
Deck Rating	6
Super -structure Rating	5
Sub-structure Rating	6
Average Daily Traffic	50
Bypass Length	none
Waterbody	New Haven River
Bridge Type	Rolled Beam with Timber Deck



ADDISON COUNTY FY22 TOWN HIGHWAY BRIDGE PRIORITIZATION

VERGENNES – VT22A – BRIDGE 27

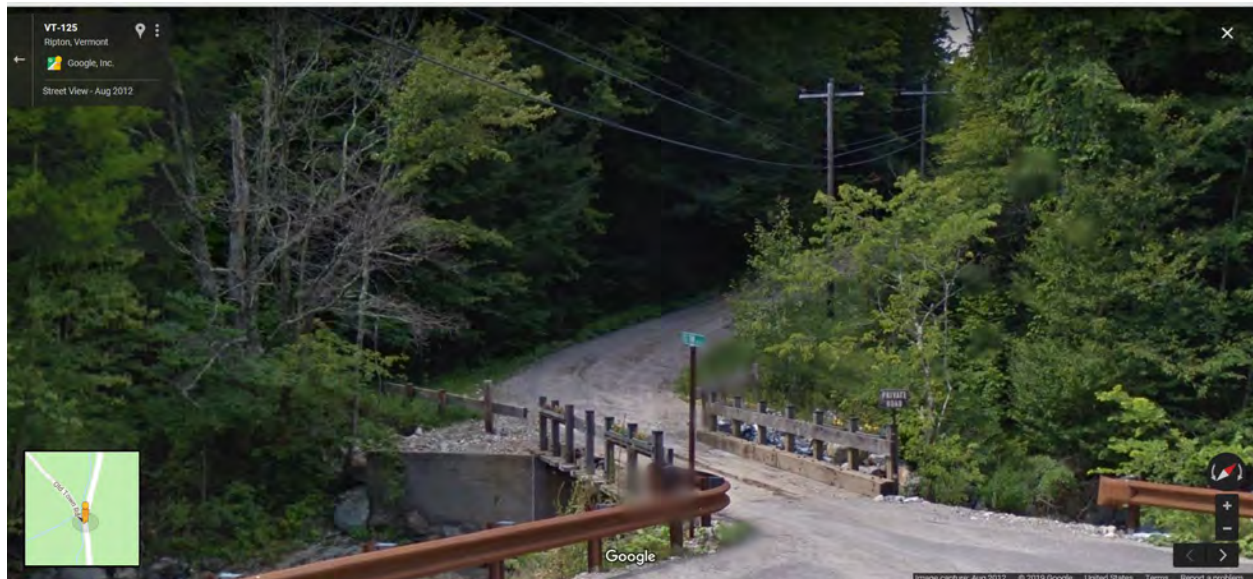
Overall Rank by Program	84
Modified Program Rank (with THB RPC Rank)	28
RPC Pre-Candidate Ranking	1
Deck Rating	6
Super -structure Rating	6
Sub-structure Rating	5
Average Daily Traffic	10,800
Bypass Length	7
Waterbody	Otter Creek
Bridge Type	5-span Rolled Beam



ADDISON COUNTY FY19 TOWN HIGHWAY BRIDGE PRIORITIZATION

RIPTON – OLD TOWN RD. (?) – BRIDGE 6

Overall Rank by Program	144
Modified Program Rank (with THB RPC Rank)	194
RPC Pre-Candidate Ranking	NA
Deck Rating	7
Super -structure Rating	8
Sub-structure Rating	5
Average Daily Traffic	20
Bypass Length	None*
Waterbody	South Branch of the Middlebury R.
Bridge Type	Rolled Beam Timber Deck



ADDISON COUNTY FY19 TOWN HIGHWAY BRIDGE PRIORITIZATION

SALISBURY — LAKE DUNMORE ROAD — BRIDGE 6

Overall Rank by Program	149
Modified Program Rank (with THB RPC Rank)	198
RPC Pre-Candidate Ranking	NA
Deck Rating	6
Super -structure Rating	6
Sub-structure Rating	5
Average Daily Traffic	630
Bypass Length	6
Waterbody	Sucker Brook
Bridge Type	2 Span Concrete Slab



ADDISON COUNTY FY22 TOWN HIGHWAY BRIDGE PRIORITIZATION

SHOREHAM – RICHVILLE ROAD – BRIDGE 8

Overall Rank by Program	163
Modified Program Rank (with THB RPC Rank)	84
RPC Pre-Candidate Ranking	5
Deck Rating	6
Super -structure Rating	6
Sub-structure Rating	6
Average Daily Traffic	690
Bypass Length	19
Waterbody	Lemon Fair River
Bridge Type	3-Span Rolled Beam



ADDISON COUNTY FY19 TOWN HIGHWAY BRIDGE PRIORITIZATION

LINCOLN – EAST RIVER ROAD – BRIDGE 17

Overall Rank by Program	176
Modified Program Rank (with THB RPC Rank)	217
RPC Pre-Candidate Ranking	NA
Deck Rating	8
Super -structure Rating	8
Sub-structure Rating	6
Average Daily Traffic	1130
Bypass Length	26
Waterbody	New Haven R.
Bridge Type	Prestressed Box BM



ADDISON COUNTY FY22 TOWN HIGHWAY BRIDGE PRIORITIZATION

BRIDPORT – CROWN POINT ROAD – BRIDGE 4

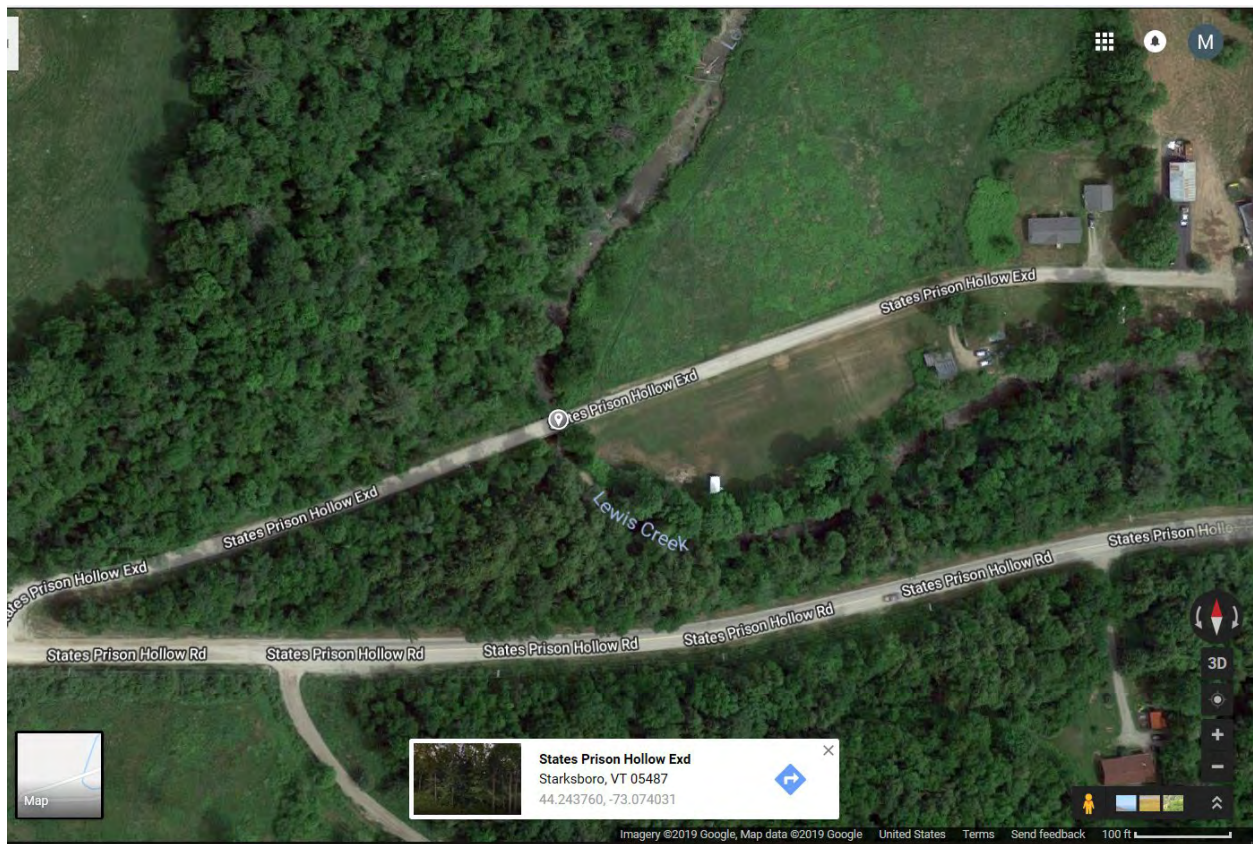
Overall Rank by Program	177
Modified Program Rank (with THB RPC Rank)	94
RPC Pre-Candidate Ranking	6
Deck Rating	6
Super -structure Rating	6
Sub-structure Rating	6
Average Daily Traffic	400
Bypass Length	2
Waterbody	Potash Brook
Bridge Type	Rolled Beam



ADDISON COUNTY FY19 TOWN HIGHWAY BRIDGE PRIORITIZATION

STARKSBORO – STATES PRISON HOLLOW ROAD – BRIDGE 18

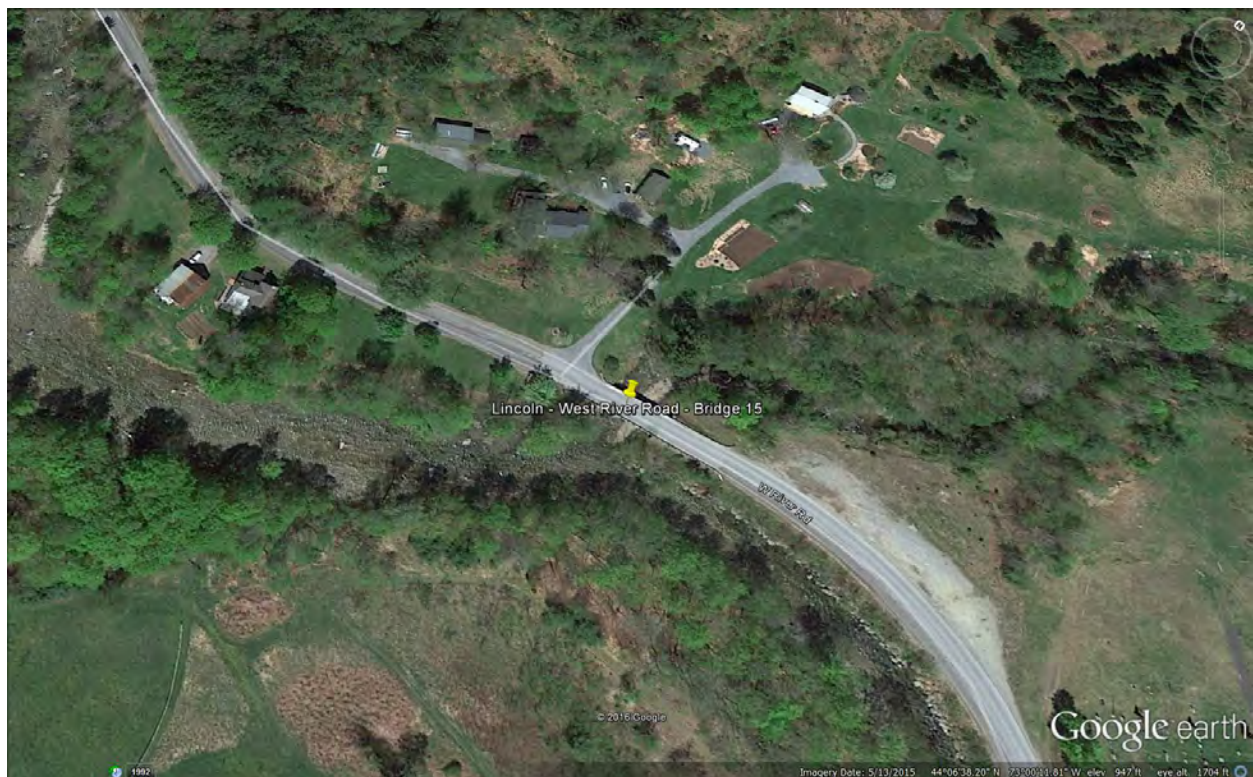
Overall Rank by Program	198
Modified Program Rank (with THB RPC Rank)	235
RPC Pre-Candidate Ranking	NA
Deck Rating	6
Super -structure Rating	6
Sub-structure Rating	8
Average Daily Traffic	40
Bypass Length	none
Waterbody	Lewis Creek
Bridge Type	Steel Beam With Timber Deck



ADDISON COUNTY FY19 TOWN HIGHWAY BRIDGE PRIORITIZATION

LINCOLN – WEST RIVER ROAD – BRIDGE 15

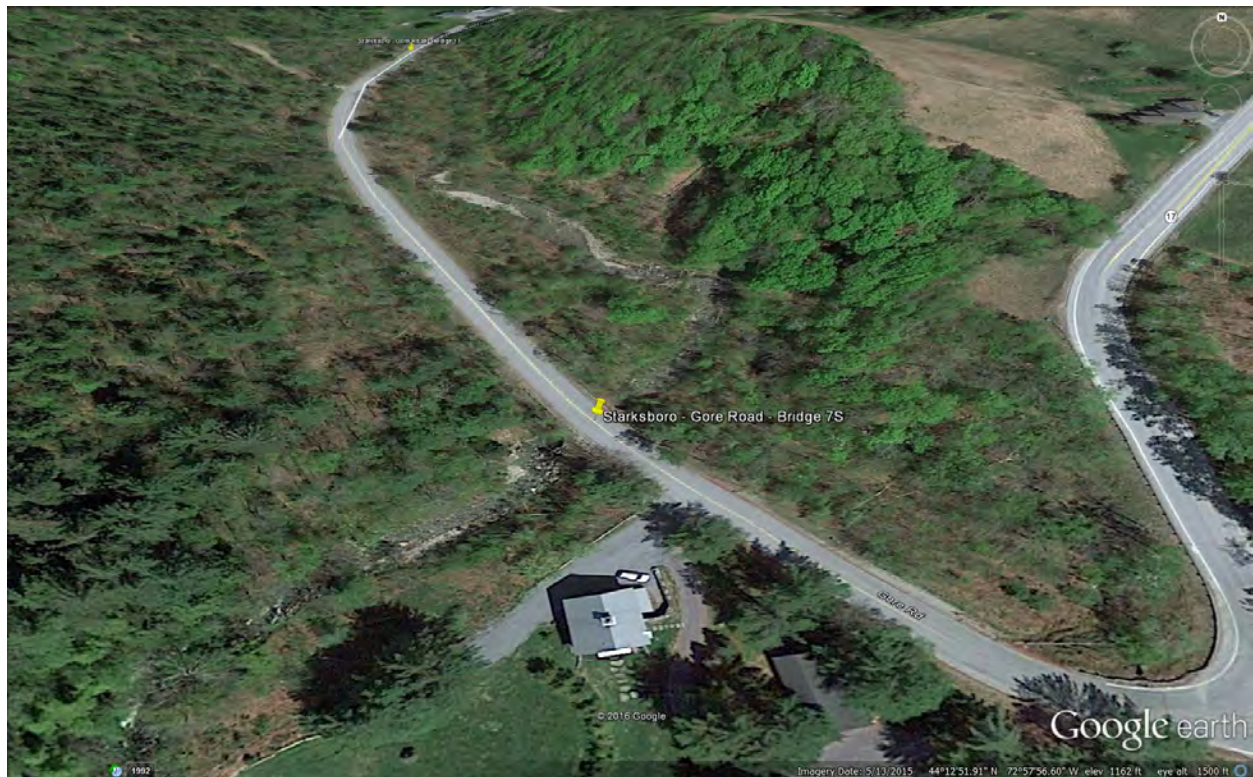
Overall Rank by Program	203
Modified Program Rank (with THB RPC Rank)	240
RPC Pre-Candidate Ranking	N
Deck Rating	7
Super -structure Rating	6
Sub-structure Rating	7
Average Daily Traffic	1840
Bypass Length	26
Waterbody	Beaver Meadow Brook
Bridge Type	Steel Beam



ADDISON COUNTY FY22 TOWN HIGHWAY BRIDGE PRIORITIZATION

STARKSBORO – GORE ROAD – BRIDGE 7S

Overall Rank by Program	206
Modified Program Rank (with THB RPC Rank)	112
RPC Pre-Candidate Ranking	7
Deck Rating	N
Super -structure Rating	N
Sub-structure Rating	N
Average Daily Traffic	440
Bypass Length	23
Waterbody	Huntington River
Bridge Type	Multi-Plate Arch



ADDISON COUNTY FY22 TOWN HIGHWAY BRIDGE PRIORITIZATION

NEW HAVEN – DOG TEAM ROAD – BRIDGE 30

Overall Rank by Program	221
Modified Program Rank (with THB RPC Rank)	134
RPC Pre-Candidate Ranking	8
Deck Rating	5
Super -structure Rating	5
Sub-structure Rating	5
Average Daily Traffic	200
Bypass Length	4
Waterbody	New Haven River
Bridge Type	4-span Concrete T-Beam



ADDISON COUNTY FY22 TOWN HIGHWAY BRIDGE PRIORITIZATION

MIDDLEBURY – HALPIN COVERED BRIDGE ROAD – BRIDGE 23

Overall Rank by Program	231
Modified Program Rank (with THB RPC Rank)	262
RPC Pre-Candidate Ranking	N
Deck Rating	6
Super -structure Rating	6
Sub-structure Rating	8
Average Daily Traffic	10
Bypass Length	none
Waterbody	Muddy Branch
Bridge Type	Town Lattice Covered Bridge



ADDISON COUNTY FY19 TOWN HIGHWAY BRIDGE PRIORITIZATION

FERRISBURGH – WING ROAD – BRIDGE 29

Overall Rank by Program	249
Modified Program Rank (with THB RPC Rank)	279
RPC Pre-Candidate Ranking	N
Deck Rating	7
Super -structure Rating	7
Sub-structure Rating	6
Average Daily Traffic	20
Bypass Length	none
Waterbody	Little Otter Creek
Bridge Type	Steel Beam with Timber Deck



ADDISON COUNTY FY22 TOWN HIGHWAY BRIDGE PRIORITIZATION

LINCOLN – YORK HILL ROAD – BRIDGE 46

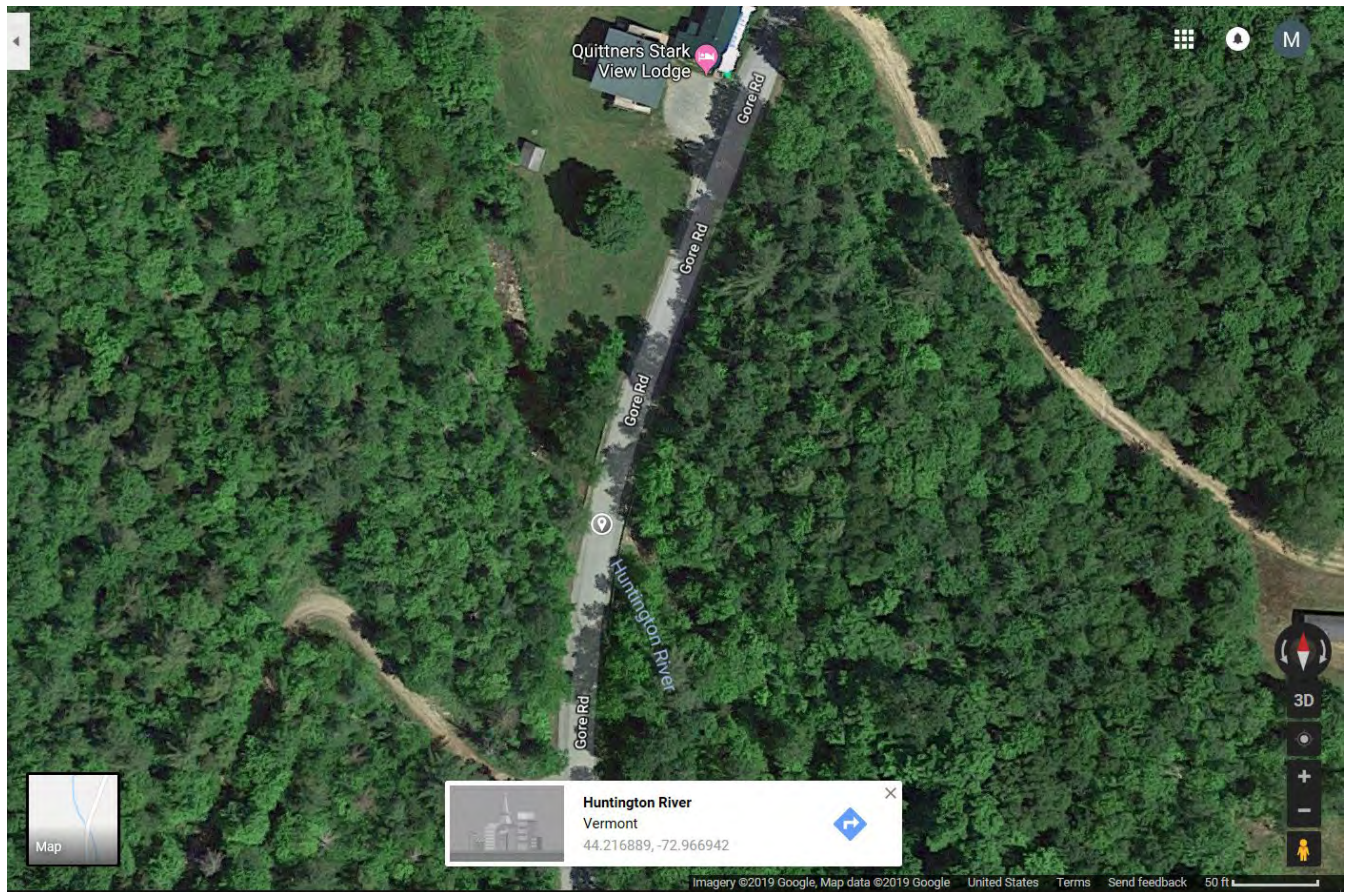
Overall Rank by Program	260
Modified Program Rank (with THB RPC Rank)	71
RPC Pre-Candidate Ranking	3
Deck Rating	6
Super -structure Rating	5
Sub-structure Rating	6
Average Daily Traffic	200
Bypass Length	5
Waterbody	New Haven River
Bridge Type	Steel Pony Truss



ADDISON COUNTY FY19 TOWN HIGHWAY BRIDGE PRIORITIZATION

STARKSBORO – GORE ROAD – BRIDGE 11

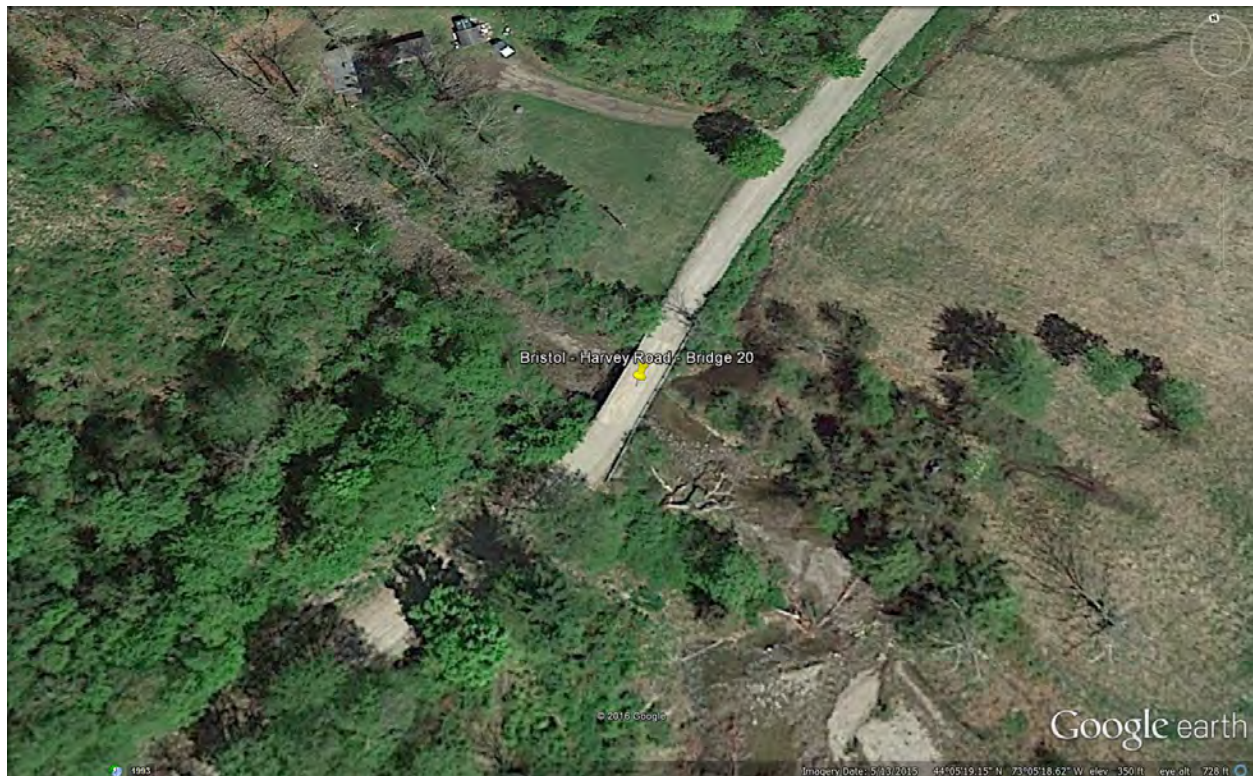
Overall Rank by Program	274
Modified Program Rank (with THB RPC Rank)	302
RPC Pre-Candidate Ranking	NA
Deck Rating	N
Super -structure Rating	N
Sub-structure Rating	N
Average Daily Traffic	440
Bypass Length	23
Waterbody	Huntington R.
Bridge Type	Multi Plate Arch



ADDISON COUNTY FY19 TOWN HIGHWAY BRIDGE PRIORITIZATION

BRISTOL – HARVEY ROAD – BRIDGE 20

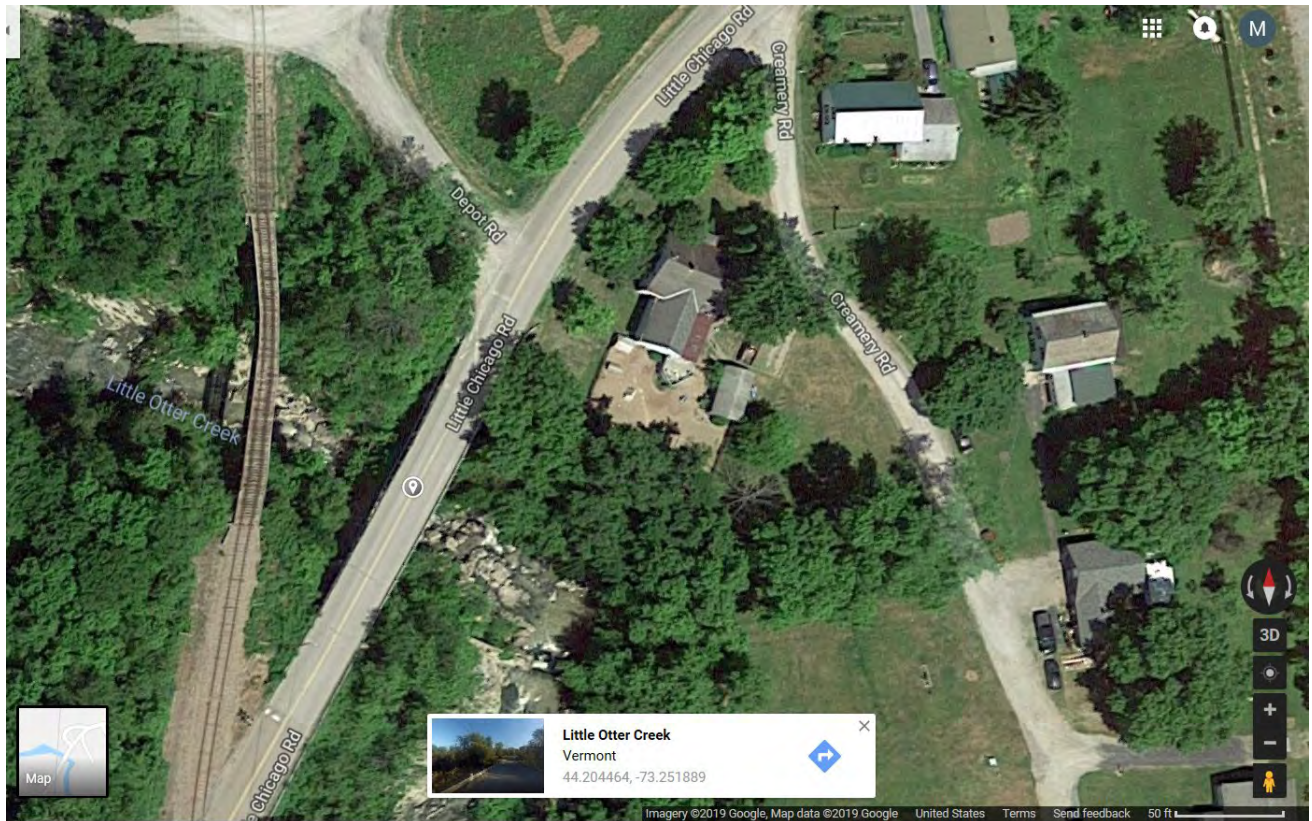
Overall Rank by Program	277
Modified Program Rank (with THB RPC Rank)	305
RPC Pre-Candidate Ranking	N
Deck Rating	7
Super -structure Rating	6
Sub-structure Rating	7
Average Daily Traffic	20
Bypass Length	none
Waterbody	Little Notch Brook
Bridge Type	Rolled Beam with Timber Deck



ADDISON COUNTY FY19 TOWN HIGHWAY BRIDGE PRIORITIZATION

FERRISBURGH – LITTLE CHICAGO ROAD – BRIDGE 11

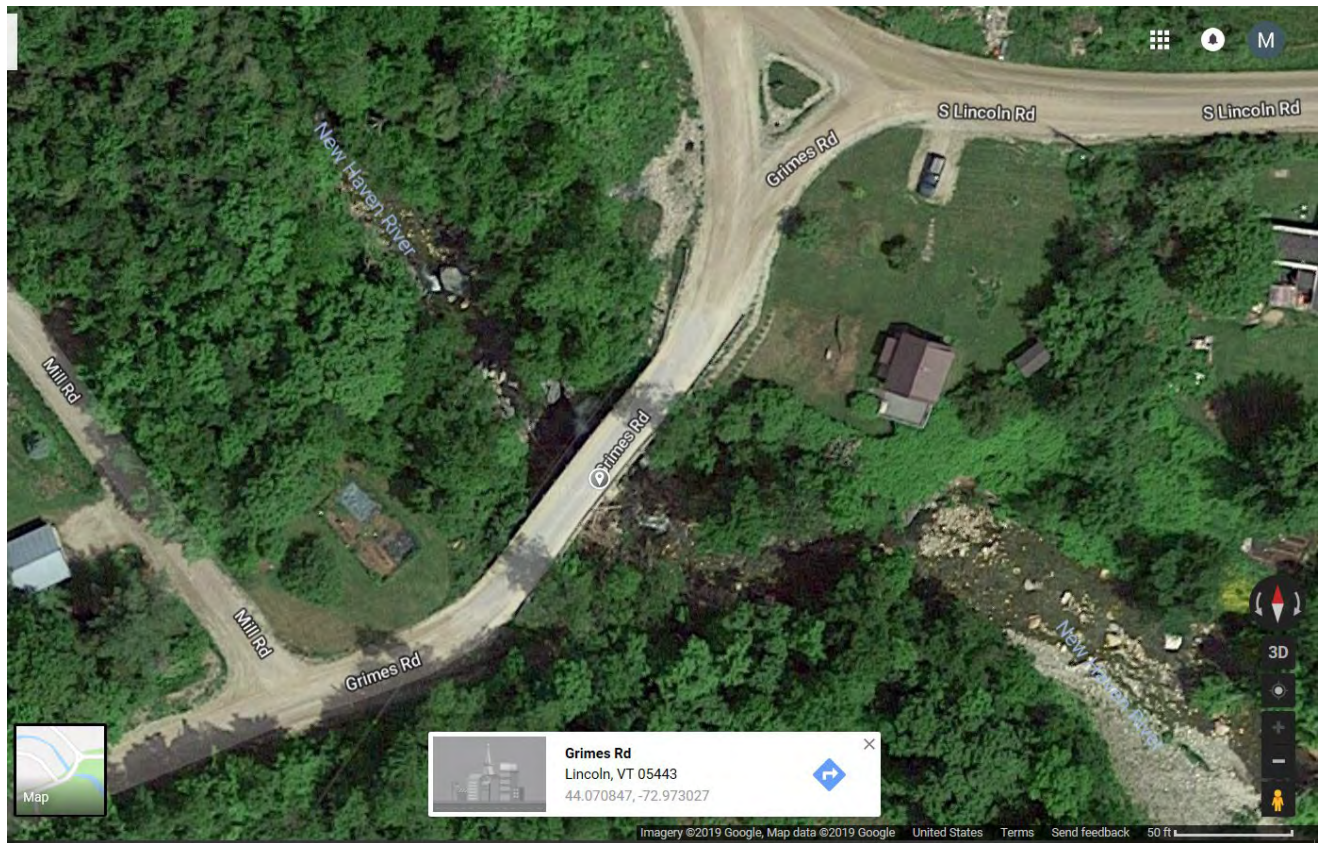
Overall Rank by Program	825
Modified Program Rank (with THB RPC Rank)	613
RPC Pre-Candidate Ranking	10
Deck Rating	5
Super -structure Rating	6
Sub-structure Rating	5
Average Daily Traffic	1000
Bypass Length	3
Waterbody	Little Otter Creek
Bridge Type	3-Span Rolled Beam



ADDISON COUNTY FY19 TOWN HIGHWAY BRIDGE PRIORITIZATION

LINCOLN – GRIMES ROAD – BRIDGE 18

Overall Rank by Program	945
Modified Program Rank (with THB RPC Rank)	526
RPC Pre-Candidate Ranking	9
Deck Rating	6
Super -structure Rating	6
Sub-structure Rating	5
Average Daily Traffic	200
Bypass Length	2
Waterbody	New Haven River
Bridge Type	Steel Beam



ADDISON COUNTY FY19 TOWN HIGHWAY BRIDGE PRIORITIZATION

MIDDLEBURY – MAIN STREET – BATTELL BRIDGE 101

Overall Rank by Program	1,145
Modified Program Rank (with THB RPC Rank)	101
RPC Pre-Candidate Ranking	2
Deck Rating	N
Super -structure Rating	N
Sub-structure Rating	N
Average Daily Traffic	16400
Bypass Length	1
Waterbody	Otter Creek
Bridge Type	Masonry Arch



ADDISON COUNTY FY22 TOWN HIGHWAY BRIDGE PRIORITIZATION

BRIDPORT – CROWN POINT ROAD – BRIDGE 5

Overall Rank by Program	1190
Modified Program Rank (with THB RPC Rank)	142
RPC Pre-Candidate Ranking	4
Deck Rating	8
Super -structure Rating	8
Sub-structure Rating	7
Average Daily Traffic	360
Bypass Length	7
Waterbody	West Branch Dead Creek
Bridge Type	Pre-stressed slab

