



Middlebury Rail & Bridge Project

Managing the Impact of Downtown Construction in Summer 2020

Our Agenda

- Review project goals
- Walk through the Summer 2020 timeline and construction plan
- Summarize key impacts on the community of Summer 2020 construction
- Highlight areas of concern to the Addison County Transportation Advisory Committee during Summer 2020
- Review post-construction benefits of the project



Project Goals

The Vermont Agency of Transportation and the Town of Middlebury

Project Goals: VTrans

1. Address the structural deficiencies of the Main Street and Merchants Row bridges that span the Vermont Western Rail Corridor track.
2. Address rail safety.
3. Provide appropriate vertical and horizontal rail clearances for the 100-year design life of the project.

In other words:

4. Replace the deteriorated 1920s-era Merchants Row and Main Street bridges with a precast concrete tunnel, restoring the Town Green to its original, pre-1840s dimensions.
5. Rebuild 3500 feet of the downtown rail corridor from the Otter Creek trestle bridge on the south to the Middlebury railyard on the north.

Project Goals: Middlebury

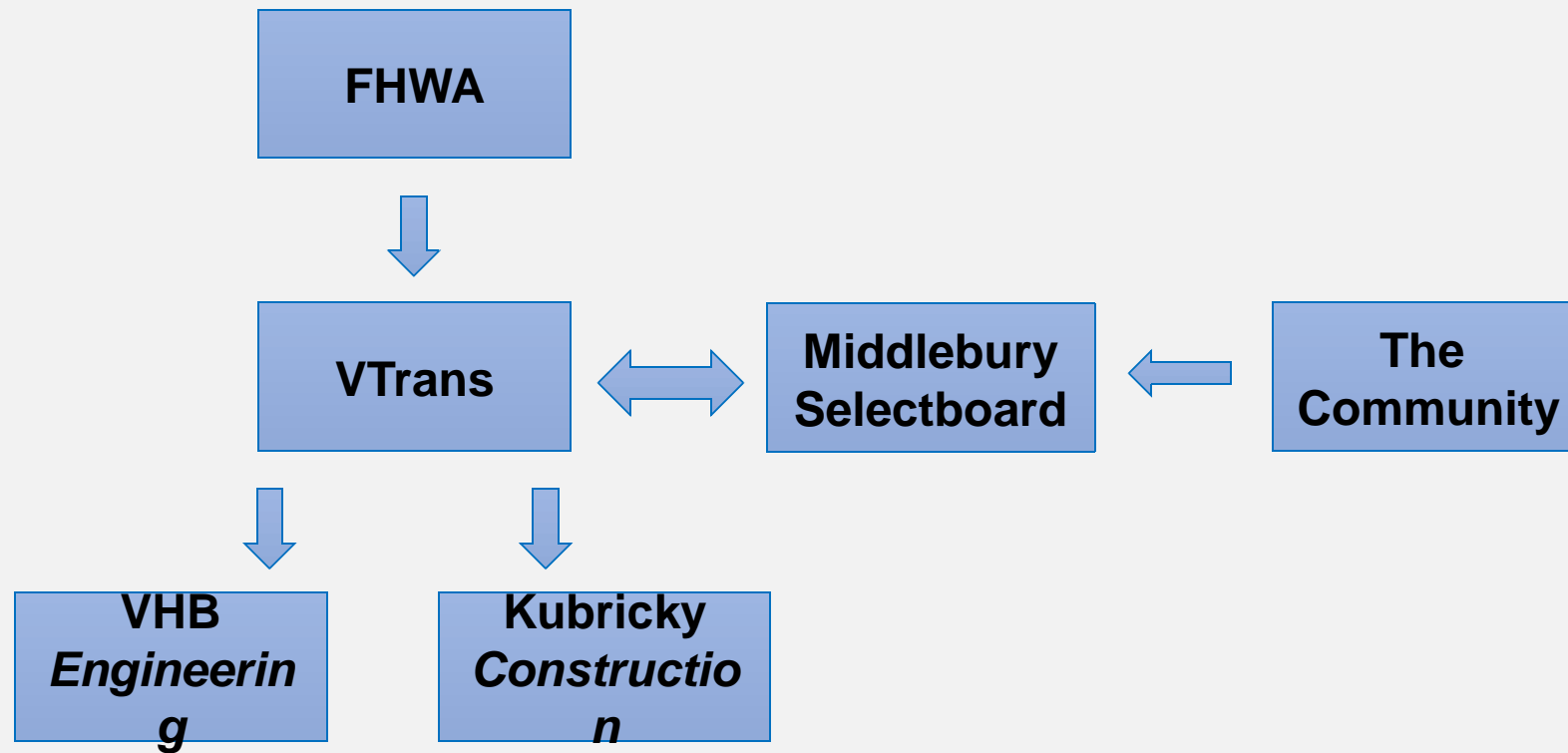
- Protect the safety of the community: people, property, and the environment
- Minimize the project's impact on the vitality of the downtown community: our businesses, residents, and institutions
- Maintain traffic flow and pedestrian access
- Develop and maintain a credible schedule
- Engage with the local community and facilitate clear communication with all stakeholders



Project Management

Federal, State & Local Stakeholders

Project Management



Middlebury

2020 Timeline

Downtown Construction Plan May – August 2020

Google Earth

800 ft



Summer 2020 Timeline

May 4 – May 21, 2020: Closure of Merchants Row

- Merchants Row closed to thru traffic starting Monday, May 4.
- Merchants Row temporary bridge dismantled.
- Limited parking on Merchants Row, sidewalk detour between the Battell Block and Town Hall Theater.
- Hours of operation = 7 am – 9 pm, Monday – Friday.
- No construction May 22 – May 26: Memorial Day/Middlebury College commencement weekend.

Summer 2020 Timeline

May 27 – August 5, 2020: Closure of Rail Line, Main Street, and Merchants Row

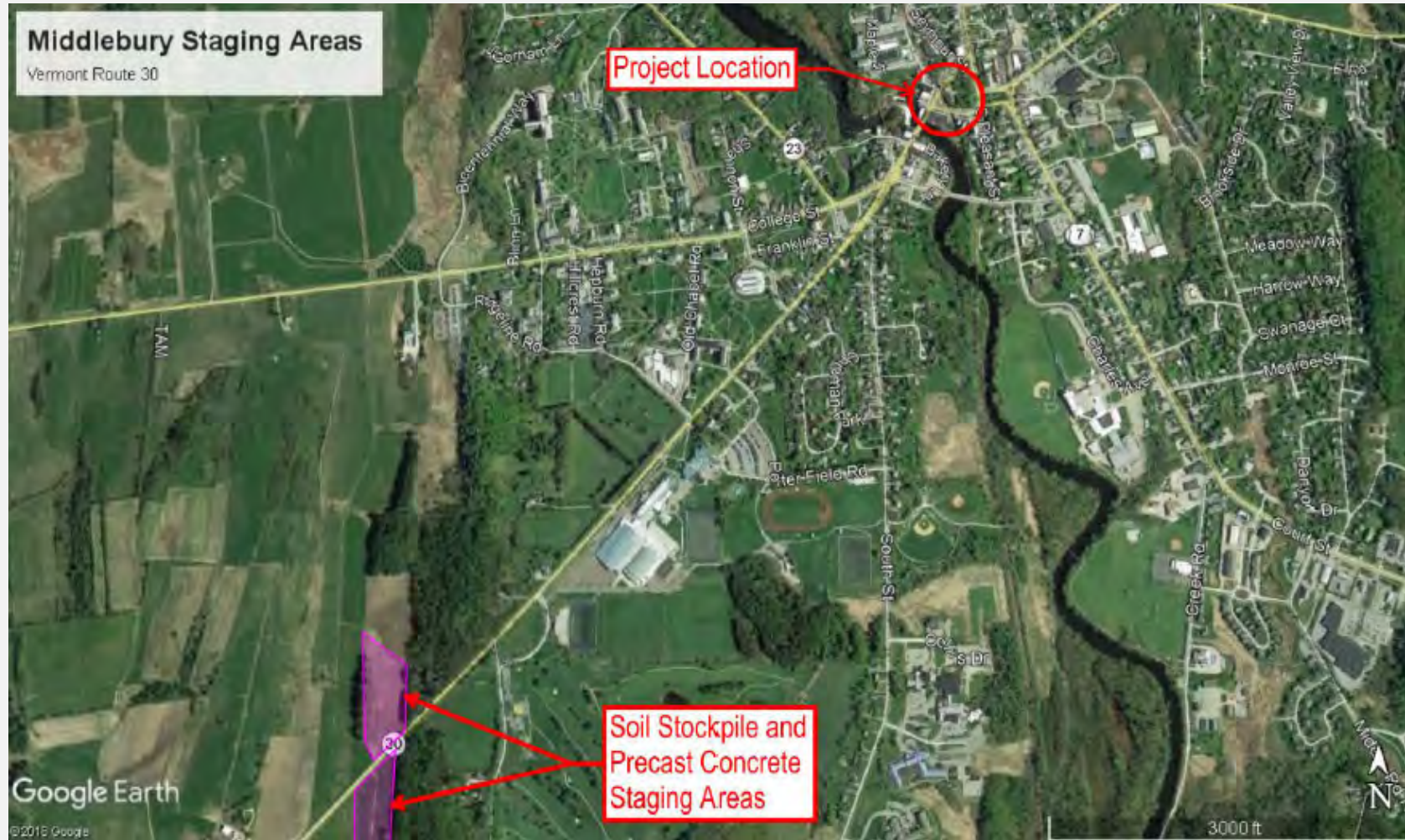
- Vermont Rail detours up the eastern side of the state; downtown rail corridor shut down.
- Main Street closed to thru traffic Wednesday, May 27, between Mill Street/Bakery Lane and Seymour Street.
- Vehicle access limited to deliveries and emergency services.
- Parking at Post Office via Seymour Street and flagged entrance to Main Street. Total of 11 parking spaces.
- Access to all downtown buildings maintained. Sidewalks open. No direct access across rail corridor (e.g., between the National Bank and the Post Office).
- Hours of operation = 24 hours a day/7 days a week.
- Main Street and Merchants Row reopen Wednesday, August 5.

Summer 2020 Timeline

May 27 – August 5, 2020: A Closer Look

- Weeks 1 and 2 = excavation of rail corridor.
- Approximately 1800 truckloads of excavated soil to be transported from the rail corridor to Fifield Farm on Route 30.
- Weeks 3 – 5 = delivery and installation of 300+ pieces of precast concrete. Goal is to set 1 piece/hour around the clock.
- Precast concrete to be stored at Fifield Farm and delivered downtown via Route 30 and Main Street.

Main Corridor for Construction Vehicles Summer 2020





Summer 2020 Impacts on Area Roadways

Highlighting Areas of Concern

Summer 2020 Impacts on Area Roadways

Areas of Concern, May 27 – August 5, 2020

- Emergency services are the priority
- Route 7 and Cross Street are the focus of traffic management
- Protecting Pulp Mill Bridge
- Travel time to and from work for those commuting crosstown
- Agri-Mark tanker trucks

2017

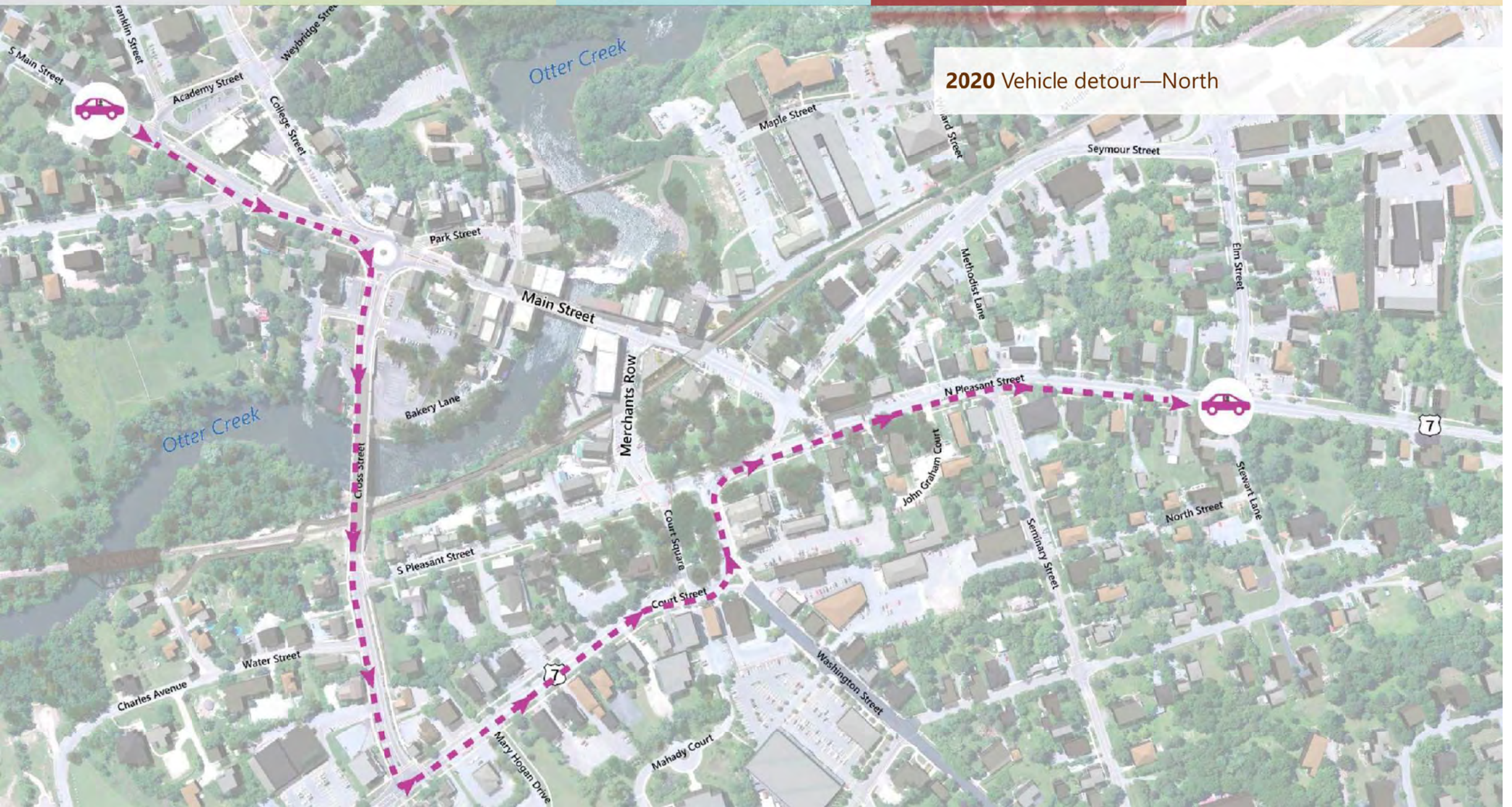
2018

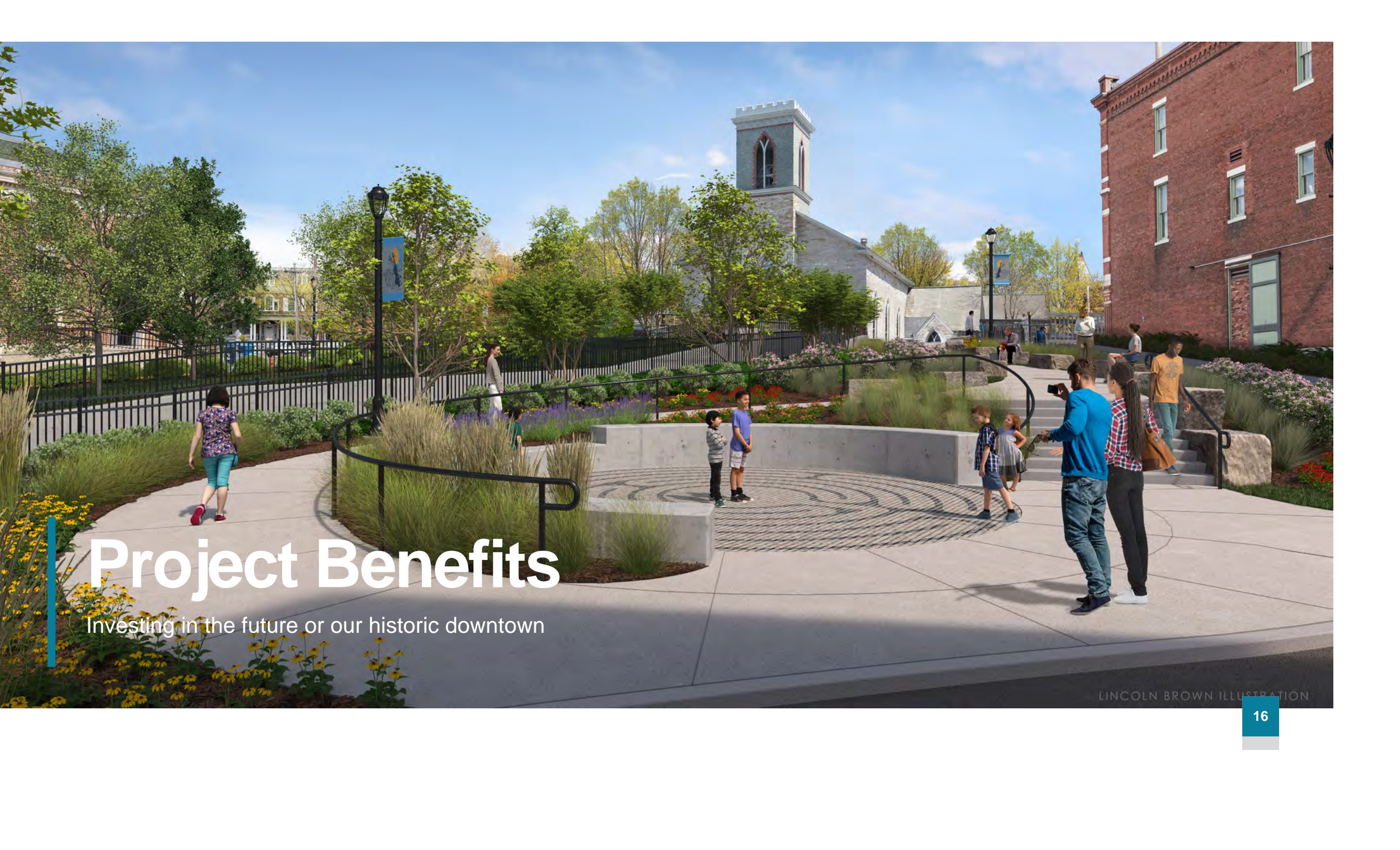
2019

2020

2021

2020 Vehicle detour—North





Project Benefits

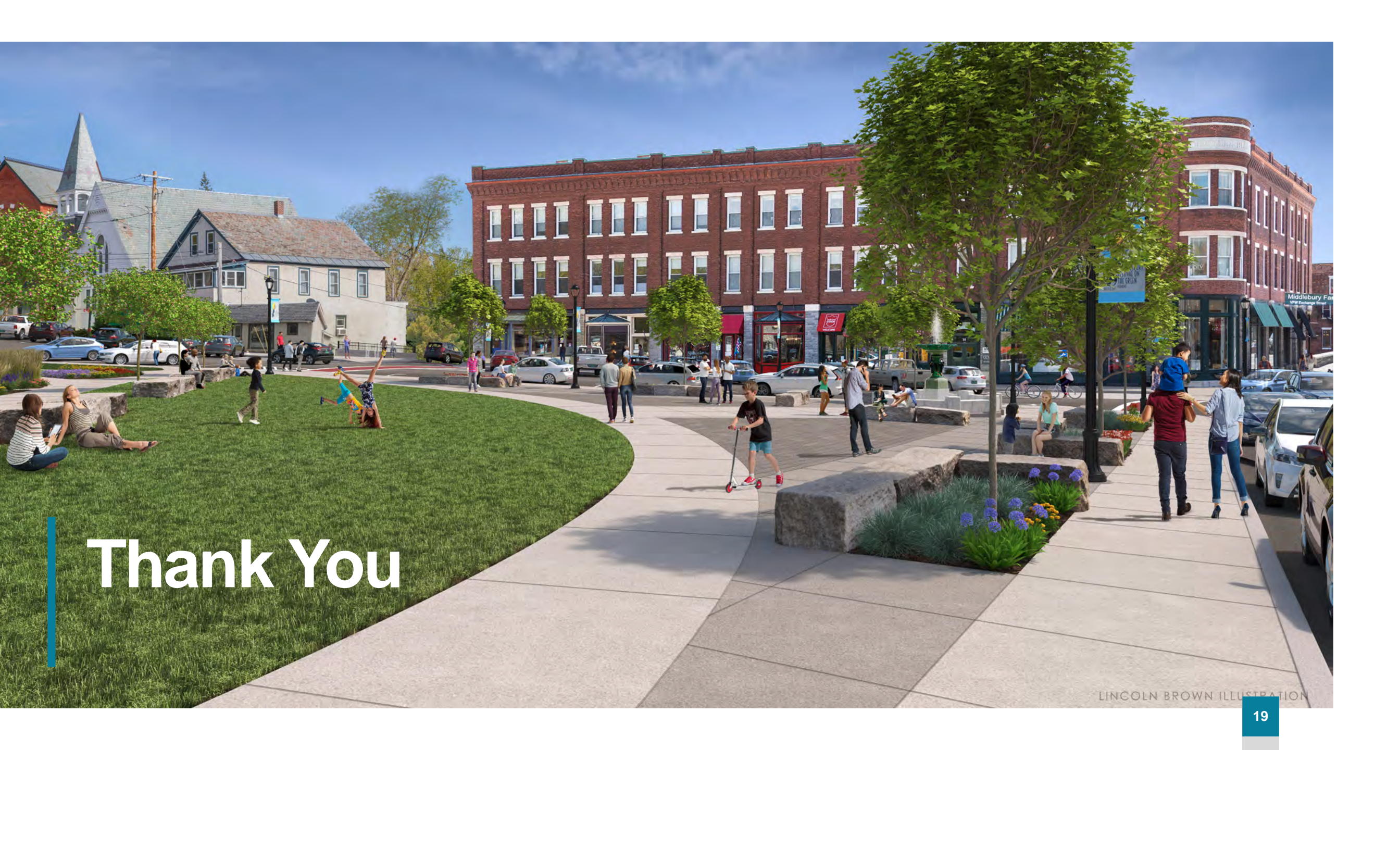
Investing in the future of our historic downtown

LINCOLN BROWN ILLUSTRATION

Project Benefits

- New fully landscaped green spaces/public event spaces in central downtown: Triangle Park and Lazarus Park
- New downtown stormwater, water, and sanitary sewer infrastructure
- Undergrounded utilities at the gateway between Marble Works and Main Street
- Amtrak service to New York's Penn Station from downtown Middlebury projected for 2021
- Neighbors Together and the Better Middlebury Partnership demonstrating our community's commitment to our quality of life
- Incentive to plan the future of downtown Middlebury
- My blog! A weekly update at www.middleburybridges.org





Thank You

LINCOLN BROWN ILLUSTRATION