



# 2021 Project Prioritization

ACRPC TAC meeting 04/21/2021





# Asset Driven Projects VTrans Identified

# Potential Projects - from VTrans - Asset Driven

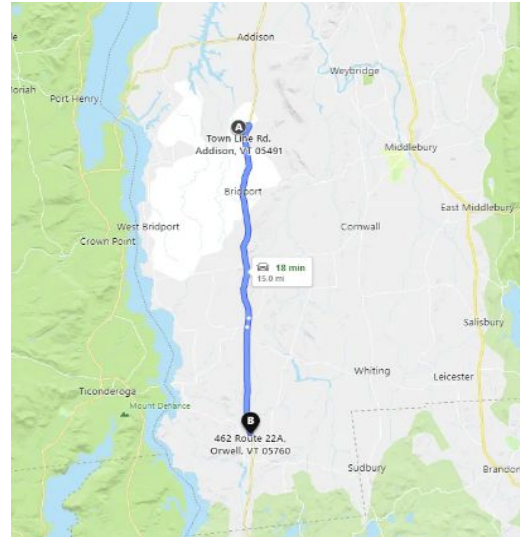
## Paving: Addison - New Haven



Safety	Asset	Mobility/ Connectivity	Economic Access	Resiliency	Environ.	Regional	Health Access	Preliminary Transport. Value
3	15	2	8	6	7	0	0	41

# Potential Projects - from VTrans - Asset Driven

## Paving: Orwell-Addison



Safety	Asset	Mobility/ Connectivity	Economic Access	Resiliency	Environ.	Regional	Health Access	Preliminary Transport. Value
3	15	2	8	6	7	0	0	41

# Potential Projects - from VTrans - Asset Driven

## Paving: Middlebury-Ripton



Safety	Asset	Mobility/ Connectivity	Economic Access	Resiliency	Environ.	Regional	Health Access	Preliminary Transport. Value
3	12	4	8	8	7	0	0	42

# Potential Projects - from VTrans - Asset Driven

## Traffic & Safety: signal upgrades - Middlebury



Safety	Asset	Mobility/ Connectivity	Economic Access	Resiliency	Environ.	Regional	Health Access	Preliminary Transport. Value
8	15	0	8	0	10	0	5	46

# Mobility

	VT17	VT22A	VT125	Signals
M3a. Does this Highway Project enhance or improve connectivity for bicyclists/pedestrians?	Yes	Yes	Yes	No
M3b. If Yes, is the project located on a "High Priority" bicycle Corridor?	No	No	Yes	Yes

# Mobility

	VT17	VT22A	VT125	Signals
M4a. Does this Highway Project enhance or improve connectivity for transit users?	No	No	No	No
M4b. If Yes, does the project incorporate transit infrastructure improvements?	No	No	No	No
M4c. If Yes, is the project within an existing transit route or does it connect to an existing transit route?	No	No	Yes	Yes



# Mobility

	VT17	VT22A	VT125	Signals
<b>M5a. Does this Highway Project enhance or improve <b>inter-modal connections</b> (park-n-rides, train stations, bus stations, airports)?</b>	No	Yes	No	No
<b>M5b. If Yes, does the project connects to a <b>park n ride</b>?</b>	No	Yes	No	No
<b>M5c. If Yes, does the project connects to a <b>train station</b>?</b>	No	No	No	No

# Mobility

	VT17	VT22A	VT125	Signals
<b>M5d. If Yes, does the project connects to an airport?</b>	No	No	No	No
<b>M5e. If Yes, does the project connect to a bus station/intermodal center?</b>	No	No	No	No

# Economic Access

	VT17	VT22A	VT125	Signals
<b>Is the project within two miles of the following:</b>				
State Designated Downtown, Growth Center or New Town Center	No	No	No	No
State Designated Village Center	Yes	Yes	Yes	Yes
Other growth areas as defined in Regional Plans or CEDS	No	No	No	No
Other areas not included above that are important to the existing or future local or regional economy	No	No	No	No

# Regional

	VT17	VT22A	VT125	Signals
<b>R1. Is the project, or the driving need for the project, identified in a regional plan (i.e, corridor study, town/city/regional plan) or does the project or resolution of the need supports the goals identified in a regional plan?</b>	No	Yes	Yes	Yes
<b>R2. Has the municipality been involved in a planning (scoping, traffic or feasibility) study or public planning process related to this need or project? Or has the municipality demonstrated support for this project in other ways?</b>	No	No	No	No

# Regional

	VT17	VT22A	VT125	Signals
<b>R3. Will this project improve the Municipality's sense of community - space to gather, park enhancements, traffic calming, trees, lighting, enhancements, gateway, historic preservation)? Does this project provide opportunities for residents to connect to community resources?</b>	No	No	No	No
<b>R4. Are there key community facilities located within the limits of the project (schools, senior centers, parks, churches, libraries, municipal buildings)?</b>	Yes	No	Yes	No

# Health Access

## **Low Improvement**

Low Improvement projects include upgrades to one or more of the following existing infrastructure; sidewalks, crosswalks, shoulders, bus stop and signals.

## **High Improvement**

High Improvement projects include new construction of one or more of the following; new sidewalks, crosswalk, shoulders, ADA intersection upgrades, new bus stop, intersection upgrades including the addition of pedestrian phases, and new transit routes.

# Health Access

	VT17	VT22A	VT125	Signals
<b>H1. If a highways project is enhancing or improving health access to health care facilities or physical activity facility (senior center, park, trails, school with community recreational program), but not private gyms, determine the level of improvement.</b>	Low	None	Low	Low
<b>H2. If a highways project is enhancing or improving health access to healthy food destinations (grocery store, health food store, food shelf, school lunch program, low income meals programs) (Not convenience stores or restaurants) determine the level of improvement.</b>	None	None	None	Low

# Health Access

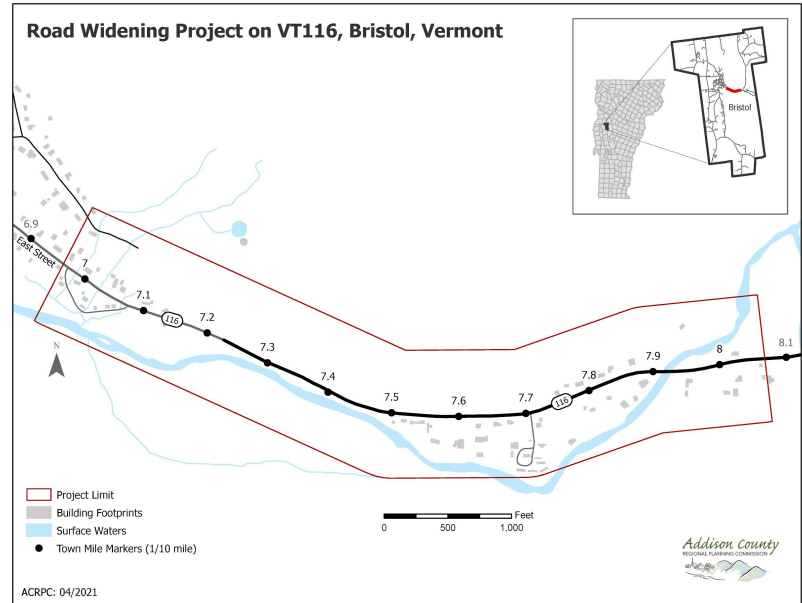
	VT17	VT22A	VT125	Signals
<b>H3. If a highways project is increasing the opportunity for physical activity determine the level of improvement.</b>	None	None	None	Low



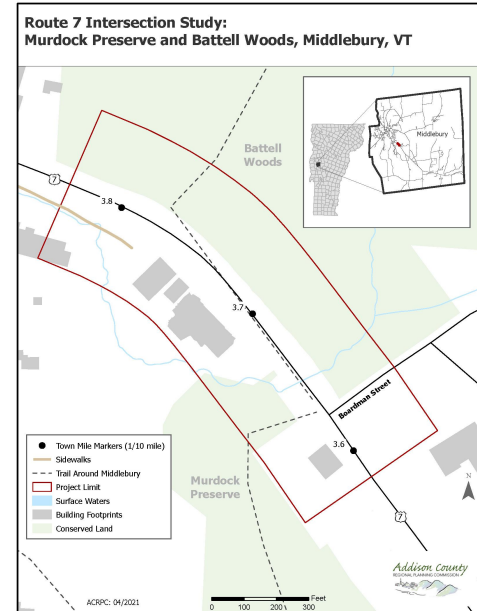


# Regionally Driven Projects TAC Identified

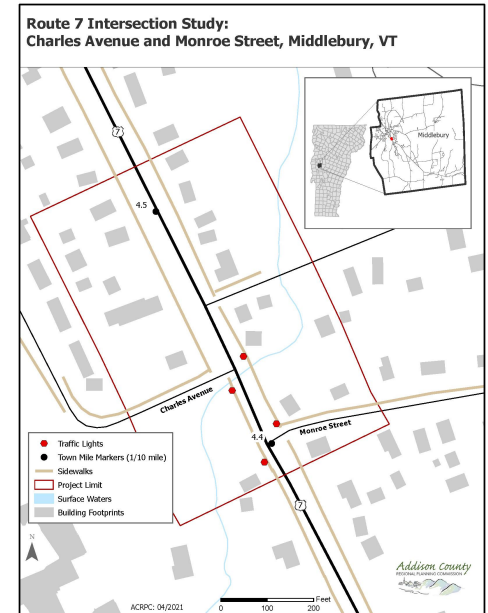
# Bristol - VT116 - Village to RockyDale



# M'bury - US7/Boardman St.



# M'Bury - US7/Charles St./Monroe St.



# Draft Final Score

Bristol VT116 widening	M'bury US7/Boardman St	M'bury US7/Charles
53	40	47

# Safety

Are there existing **high crash locations** within the project area?

>> If "Yes", is the project intended to improve safety at existing High Crash Locations? 20

>> If "No", have any safety issues been identified in a plan or report that are intended to be improved by the project?  
(Can include bicycle, pedestrian, and transit safety issues.) 10

>> If "No", are there perceived safety issue(s), including bike/ped issue(s), that has not been vetted or quantified that are intended to be improved by the project? (Can include bicycle, pedestrian, and transit safety issues.) 5

Bristol VT116 widening	M'bury US7/Boardman St	M'bury US7/Charles
10	0	5

# Asset Condition

**Is this a new capacity project (Including new sidewalks, paths, park & rides, etc.)?**

>> If "No", Are the assets being improved in generally poor condition? (Interstate/NHS = 20, Principal Arterial = 18, Minor Arterial = 16, Major Connector = 14, Other = 12) 20

>> If "No", Are the assets being improved in generally fair condition? (Interstate/NHS = 14, Principal Arterial = 12, Minor Arterial = 10, Major Collector = 8, Other = 6) 14

>> If "No", Are the assets being improved in generally good condition? (Interstate/NHS = 6, Principal Arterial = 4, Minor Arterial = 3, Major Collector = 2, Other = 1) 6

Bristol VT116 widening	M'bury US7/Boardman St	M'bury US7/Charles
3	4	4

# Mobility

Is the project intended to improve **congestion** that negatively affects access to jobs or other destinations? (to receive points sidewalk and path projects must be providing an alternative to congested routes)

5

Bristol VT116 widening	M'bury US7/Boardman St	M'bury US7/Charles
0	5	5



# Connectivity (Max. 10 Points)

**Is this Project intended to improve inadequate existing connectivity for bicyclists?** 2

>>If "Yes", is the project located on a "High Priority" bicycle Corridor identified by VTrans?

2

>>If "Yes", and not in a "High Priority" Corridor, is the project in a high priority regional bike corridor? 1

Bristol VT116 widening	M'bury US7/Boardman St	M'bury US7/Charles
4	4	4

# Connectivity (Max. 10 Points)

**Is this Project intended to improve inadequate existing connectivity for pedestrians?**

>>If "Yes", is the project located completely or partially within an area designated as a *Downtown, Village Center, New Town Center, Growth Center or Neighborhood Development*? 4

>>If "Yes", and not in a state designated area, is the project located completely or partially within an area that the Regional Planning Commission recognizes as a "Growth Area"? 2

Bristol VT116 widening	M'bury US7/Boardman St	M'bury US7/Charles
0	0	0

# Connectivity (Max. 10 Points)

**Is this Project intended to improve inadequate existing connectivity for transit users?**

>> If "Yes", is the project intended to incorporate transit infrastructure improvements? 2

>> If "Yes", does the project connect within an existing transit route? 2

Bristol VT116 widening	M'bury US7/Boardman St	M'bury US7/Charles
0	0	2

# Connectivity (Max. 10 Points)

**Is this Project intended to improve inadequate existing inter-modal connections?**

If Yes, does the project connect to a park & ride? 2

If Yes, does the project connect to a train station? 2

If Yes, does the project connect to an airport? 2

If Yes, does the project connect to a bus station? 2

Is this Project intended to improve inadequate existing connectivity to recreation or tourism destinations? 2

Bristol VT116 widening	M'bury US7/Boardman St	M'bury US7/Charles
2	2	0

## Connectivity Total (Max. 10 Points)

Bristol VT116 widening	M'bury US7/Boardman St	M'bury US7/Charles
6	6	6

## Economic Access (Max. 15 Points)

Is the project in a state designated Downtown, Growth Center or New Town Center? 9

Is the project in a designated Village Center 7

Is the project in a growth area defined in a Regional Plan or CEDS 5

Is the project located within an area not included above but important to the local or regional economy? 2

Bristol VT116 widening	M'bury US7/Boardman St	M'bury US7/Charles
2	2	2

# Economic Access (Max. 15 Points)

Annual Average **truck trips** per day are more than 1,000 2

Annual average truck trips per day are 500-1,000 1

Average annual **daily traffic** (AADT) is more than 15,000 4

AADT is 10,000 - 15,000 3

AADT is 5,000-10,000 2

AADT is less than 5,000 1

Bristol VT116 widening	M'bury US7/Boardman St	M'bury US7/Charles
2	5	5

## Economic Access Total (Max. 15 Points)

Bristol VT116 widening	M'bury US7/Boardman St	M'bury US7/Charles
4	7	7



# Resiliency

Is the project intended to improve Resiliency of the transportation system by including one of 64 mitigations? (the list of Flood Mitigation Measures can be found in the Users Guide)

>> If "Yes" Is the project location within one of the TRPT watersheds?

>> If "Yes", enter the criticality and vulnerability scores 10

>> If "Yes", and not one of the TRPT watersheds access the Vermont Statewide Flood Vulnerability and Risk Map Service to record the VPSP2 Flood Resilience Score 10

Bristol VT116 widening	M'bury US7/Boardman St	M'bury US7/Charles
8	0	0

# Environment (Max. 10 Points)

## Wildlife

The project's **primary purpose** is to benefit terrestrial **wildlife or aquatic organism passage** 10  
Project is intended to include **design features** that would benefit wildlife or aquatic organism passage as a dual benefit 5

## Air Quality/Energy

Project is expected to support **operational efficiency** (i.e., less queuing, synchronized signals, added turn lanes) 5  
Project is expected to include **EV charging stations?** 5  
Project is expected to address Transportation Demand Management resulting in **reduced VMT** (i.e., public transit, bike/ped accommodations, park & ride) 5

Bristol VT116 widening	M'bury US7/Boardman St	M'bury US7/Charles
5	5	5

# Environment (Max. 10 Points)

## Water Quality

Project is expected to improve water quality by **eliminate direct discharges** or untreated runoff to surface waters 2

Project is expected to **prevent existing or future erosion** 2

Project is expected to **reduce impervious footprint** by 10 percent or more 2

Bristol VT116 widening	M'bury US7/Boardman St	M'bury US7/Charles
2	0	0

## Environment Total (Max. 10 Points)

Bristol VT116 widening	M'bury US7/Boardman St	M'bury US7/Charles
7	5	5

# Community

Is the project, or the driving need for the project, identified **in a regional plan** (i.e, corridor study, town/city/regional plan) or does the project or resolution of the need supports the goals identified in a regional plan? [Points for long-term vision] 2

Has a **planning or scoping study been complete** by the RPC or municipality? 2

Has the **municipality endorsed** the project? 2

Will this project **improve the Town's sense of community** (provide for public space, park enhancements, traffic calming, trees, lighting, enhancements, gateway, historic preservation)? Does this project provide opportunities for residents to connect to community resources? 2

Are there **key community facilities located within the limits** of the project (schools, senior centers, parks, churches, libraries, municipal bldgs)? [community access portion] 2

Bristol VT116 widening	M'bury US7/Boardman St	M'bury US7/Charles
10	8	10

## Health Access (Max. 5 Points)

Does the project improve access\* to **health care facilities**? 5

Does the project improve access\* to **physical activity facility** (senior center, park, trails, school with community recreational program)? 5

Does the project improve access\* to **healthy food destinations** (grocery store, health food store, food shelf, school lunch program, low income meals programs). 5

Will the project **result in increased physical activity**? 5

Does the project increase the **opportunity for physical activity**? 5

*\*Access improvement includes new or improved sidewalks, crosswalks, shoulders, ADA intersection upgrades, bus stops, intersection pedestrian phases, or transit routes.*

Bristol VT116 widening	M'bury US7/Boardman St	M'bury US7/Charles
5	5	5