

Addison County Corridor Management Plan

Lake Champlain Byway



Addison County Regional Planning Commission
March 2017

PREAMBLE **5****CHAPTER 1 THREE BYWAY CORRIDORS OF THE LAKE
CHAMPLAIN BYWAY** **7**

LAKE CHAMPLAIN ISLANDS	7
GREATER BURLINGTON	7
ADDISON COUNTY	7

CHAPTER 2 ORIENTATION **8**

WHERE IS THE ADDISON COUNTY BYWAY?	8
BYWAY TOWNS	8
ADDISON	8
CORNWALL	9
FERRISBURGH	9
MIDDLEBURY	9
ORWELL	9
PANTON	10
SHOREHAM	10
VERGENNES	10
WHITING	11

**CHAPTER 3 ELEMENTS OF THE CORRIDOR
MANAGEMENT PLAN** **12**

WHY A NEW PLAN?	12
14 RECOMMENDED ELEMENTS	12

CHAPTER 4 INTRINSIC QUALITIES **14**

WHAT IS AN INTRINSIC QUALITY?	14
INTRINSIC ASSESSMENT	15
OPPORTUNITIES AND IMPACTS	16
TOWN PLANNING AND COMMUNITY DESIGN	16
MULTIMODAL	16
MULTI-DESTINATION	17
WAYPOINT COMMUNITIES	17
FOCUS AREAS	17

**CHAPTER 5 STRATEGIES FOR MAINTENANCE AND
ENHANCEMENT** **19**

PLAN OBJECTIVES AND GOALS	19
MAPS	19
PARTNERS	19
POTENTIAL PARTNERS	20
RECENT PLANNING ACTIVITIES AND RECOMMENDED ACTIONS	20
2014 SITE MANAGER SURVEY	20
2014 SITE MANAGER MEET-UP	21
PROJECT IDEAS	21
10 ACTION ITEMS FOR BYWAY COORDINATION EFFORTS	21

APPENDIX **23**

A: BROCHURE, LAKE CHAMPLAIN BYWAY	23
B: BROCHURE, ADDISON COUNTY: GUIDE TO ACTIVITIES ALONG THE LAKE CHAMPLAIN BYWAY	23
C: BROCHURE, WATER RECREATION SITES OF THE LAKE CHAMPLAIN BYWAY	23
D: BROCHURE, WINTER ACTIVITIES ALONG THE LAKE CHAMPLAIN BYWAY	23
E: 2014 BYWAY SITE MANAGER SURVEY RESULTS	23

Preamble

The Lake Champlain Byway is a Scenic Byway designated by the State of Vermont located in the northwest portion of the state. From north to south, the formal designated motor route is 134 miles (215 km) long and consists of U.S. Route 2 through the Grand Isle County, U.S. Route 7 through Chittenden County and then portions of U.S. 7 and portions of Vermont Routes 22-A, 73 and 74 in Addison County.

The Byway is managed by the Lake Champlain Byway Council, a registered Vermont Non-Profit Corporation. The purpose of the Corporation shall be to serve as the managing and coordinating body for the Lake Champlain Byway, a designated Byway within the State of Vermont and to undertake and support projects that balance the promotion, preservation, enjoyment, and stewardship of the Byway's intrinsic resources. The Council's Board of Directors consists of 12 members: representatives of seven regional organizations and an additional five at-large members appointed by the first seven members. The Byway was first conceived in the 1990s and then came to fruition in the early-to-mid 2000s. The formation of the Council in November 2004 formalized this long-standing collaboration of the various regional planning commissions, regional chambers of commerce and others organizations.

From late 2004 through spring 2017 the Byway Council carried out various activities to develop the Byway. These activities fell into two categories: coordination and project management. Coordination was carried out by Board meetings to confer on such topics as development of grant proposals, tracking grant implementation, and updates to the Council's Bylaws. Coordination was effected by frequent consultations with the Vermont Agency of Transportation and the Vermont Department of Tourism and Marketing. Going forward it is anticipated that the Byway Council will need to meet less often given the lack of grant funding.

Project management consisted of overseeing the implementation of seven grants secured by the Council from the Federal Highway Administration's National Scenic Byway program as follows:

FY07-#01, Travel Information and Improvements

- Developed a "Lake Champlain Byway" brochure in both English French and outdoor information panels;; completed a Byway website;; installed trailblazer signs on Route 2 in the Champlain Islands and in towns of

Addison County, and developed and constructed two portable toilet shelters in the Islands.

FY08-#05, Corridor Management Plan Update and Capacity Building

- Funded participation of RPC and municipal staff at the 2009 and 2011 National Scenic Byways Conferences and funded the development of the 2017 updates to the three respective County Corridor CMPs.

FY08-#06 Chittenden County Recreational & Cultural Sites Inventory

- Funded the Chittenden County RPC to create a recreational and cultural sites inventory for its eight byway communities and hire contractors to work with each of the communities to provide preliminary designs and cost estimates for various improvements. recommended by the inventory.

FY09-#02 Byway Publications

- Developed and distributed a water recreation guide to Lake Champlain and the Byway's other waterways and a winter activities guide.

FY10-#01 and FY11-#02 Bicyclist Rest Areas

- Via a subcontract from the Byway Council, Local Motion (a regional advocacy group for biking, hiking and walking) designed and installed eight small bicyclist rest areas along the route of the Lake Champlain Bikeway which traverses through several Byway communities.

FY12-#01 Interpretive Planning

- Developed and completed an Interpretation Coordination Plan for the Byway.

Management and development of the Byway is informed by its three respective Corridor Management Plans for each of the three counties (Grand Isle, Chittenden and Addison) traversed by the route of the Byway. The purpose of these Plans is to outline protection and enhancement of the byway's intrinsic qualities and character.

The completion of all three county Corridor Management Plans" represents the last significant project managed by the Council as Federal Fiscal Year 2012 was the last year such National Scenic Byway grants were made available. Going forward, it is anticipated that the only significant project management activity to be undertaken by the Council will be oversight of the Byway's website, www.lakechamplainbyway.com.

Each CMP is unique to its respective county, however, the Lake Champlain Byway Council and the Board of each of the three respective Regional Planning Commissions,

hereby endorse the following overarching goal and strategic actions for the Lake Champlain Byway:

Overarching Goal

To undertake and support projects that balances the promotion, preservation, enjoyment, and stewardship of the Byway's intrinsic resources.

Strategies

- 1) Economic Development: promote tourism opportunities that are consistent with the principles of sustainable development;
- 2) Transportation Improvements: promote programs and projects that improve transportation infrastructure for all travel modes, improve safety and enhance the traveler experience; and
- 3) Regional Coordination: promote collaboration in marketing and interpretation among the agencies and organizations with an interest in the Byway's intrinsic resources.

Chapter 1 Three Byway Corridors of the Lake Champlain Byway

Lake Champlain Islands

Nestled between Vermont's Green Mountains and the Adirondacks of New York, the Islands sit below the Canadian border amidst the sixth largest freshwater lake in the United States. Together, they are 30 miles long, with four historic village areas, and a multitude of recreation opportunities from apple picking, fishing, swimming, cycling, ice fishing and skating. There are numerous historic sites, lakeside inns and cottages, and several marinas.

Alburgh, on the Canadian border, has bike trails and sand dunes, farmstead cheese and chocolates. The Islands also host five Vermont State Parks providing ample camping



opportunities. North Hero has lakeside inns with fine dining and outdoor theater. Grand Isle's Hyde Log Cabin is Vermont's oldest, and South Hero's apple orchards and vineyards are open in season.

Greater Burlington

The eight byway communities of the greater Burlington area present a diverse menu of opportunities for the traveler. It includes densely populated urban areas, growing suburban areas and areas that remain rural. Burlington is the hub for the region having a classic small city downtown with numerous museums and arts and entertainment venues and several lakeside parks and beaches. Greater Burlington can be traversed by foot, by public transportation or use the city's famed bike path that

fronts Lake Champlain.

Winooski, a historic mill city, boasts numerous brick and stone buildings reflective of its industrial heritage. The downtown is completely redeveloped with pedestrian-friendly streets and pocket parks and includes a boardwalk along the roaring Winooski River as well as two fine local museums, quiet nature trails and great fishing holes.

South Burlington is a newer, growing suburban community but has several excellent parks and natural areas all linked by an extensive recreation path system. Essex Junction is a compact village that hosts the Byway's only Amtrak passenger station. It is also home to the state's largest outdoor cultural and performance venue, the Champlain Valley Exposition which hosts a traditional country fair around Labor Day and numerous other events year-round.

The towns of Shelburne, Charlotte, Milton and Colchester have histories based upon agriculture and other traditional industries. They host many opportunities for outdoor recreation such as parks and natural areas, rivers, ponds and hiking trails. The traveler can experience classic New England village architecture and tour several well-regarded local museums. Of particular interest are Shelburne Museum and Shelburne Farms, Mt. Philo State Park in Charlotte, Sandbar State Park in Milton and the boating center of Malletts Bay in Colchester.

Addison County

Addison County, located in the lower Champlain Valley is bordered by Lake Champlain and the Adirondacks to the west and the Green Mountains to the east. Next to Franklin County, Addison County is the most agricultural county in Vermont. It is rich in scenic lake, pastoral and mountainous landscapes.

Addison byway towns offer a bounty of both cultural and traditional events -concerts, community plays, pancake breakfasts, street and farm festivals. Nearby mountains, forests, lakes and country roads offer numerous outdoor recreation opportunities from swimming and hiking, camping, bird watching, boating and horseback riding. It is

a popular destination for cycling tours and avid cyclists.

See the following Chapter for more on Addison County Byway Towns.

Chapter 2 Orientation

Where is the Addison County Byway?

First designated as part of the Champlain Valley Byway in 2000, the Addison County sections of the byway includes, from north to south, the municipalities of Ferrisburgh, Vergennes, Addison, Pantton, Shoreham, Orwell, Cornwall and Whiting. The Corridor's designated Byway motor routes are Route 7, through Ferrisburgh, Vergennes, Middlebury and East Middlebury, Route 22 through Vergennes, Route 17 and 125 through Pantton and Addison, Route 74 through Shoreham and Cornwall, and Route 73 through Orwell.

Byway Towns

Addison

Addison sits on the shores of Lake Champlain and is home to the historic Lake Champlain Bridge crossing into Essex County, New York. The Bridge was rebuilt in 2010 and now accommodates pedestrians and cyclists as well as vehicular traffic.

Addison was chartered in 1761, but has most likely been inhabited for thousands of years due to its proximity to Lake Champlain and the rich wildlife area of Dead Creek. Addison currently has a population of approximately 1,371 residents.

The Lake Champlain Bridge is a historic landmark of Addison and is in close proximity to other points of interest including: the D.A.R. John Strong Mansion Museum, Chimney Point State Historic Site, McCuen's Slang fishing access, the Dead Creek Wildlife Management Area and the D.A.R State Park. Other recreational opportunities include a Geese Viewing Pull off on Route 17 and the Snake Mountain Wildlife Management Area.

The Byway goes along Route 22A and Route 17, passing a number of commercial properties including a Restaurant, Campground and Marina. Stunning views of the Adirondacks exist all along Lake Street, Route 17 and Route 22A.



Cornwall

Cornwall, in the central part of Addison County, is located four miles southwest of Middlebury. Cornwall was largely an agricultural town, specializing in Merino sheep production, Morgan horses and apple orchards with many dairy farms as well. Today, Cornwall has several working dairy farms remaining and one fully operating apple



orchard. Natural resources include the Lemon Fair River which crosses the northwest corner of town and Otter Creek which flows along part of the eastern boundary. The Cedar Swamp takes up much of Cornwall's southeast corner, being several thousand acres. There is a major limestone ledge in the center part of the town.



Ferrisburgh

Founded in 1762, Ferrisburgh's western boundary is Lake Champlain where much of the shoreline constitutes some of the best natural harbors on the lake. Two Vermont State Parks are located in Ferrisburgh—Button Bay and Kingsland Bay State Park—offering camping, picnicking, swimming, and boat access. Nearby, the Lake Champlain Maritime Museum shares the rich history and archaeology of Lake Champlain. Rokeby Museum, a National Historic

Landmark, is a 90-acre historic site which is one of the best documented Underground Railroad sites in the country.

Middlebury

Middlebury, also known as the 'Shire Town' of Addison County, was chartered in 1761 and was settled just after the Revolutionary War. Today it has a population of 8,200. The village is listed on the National Register of Historic Places. Middlebury is home to internationally-recognized Middlebury College, many businesses, restaurants, breweries and architecturally distinguished churches and public buildings as well as a 16 mile public walking trail – the *Trail Around Middlebury* (TAM).



Passing through the heart of the historic village is the Otter Creek, the longest river in Vermont. You can see its powerful waterfall from the Battell Bridge and through the windows of an art gallery. In Cannon Park, across from the Henry Sheldon Museum of Vermont History, there is an historic marker commemorating John Deere and his invention of the "the plow that broke the plains." From 1821 to 1825 Deere apprenticed at an area blacksmith shop. Deere then moved to Illinois where he built the world's first steel moldboard plow.

Orwell

Home to approximately 1,200 residents, Orwell features many farms, orchards, and several access points to Lake Champlain for boating, kayaking and fishing.

The Town of Orwell was chartered in 1763, but no settlement occurred in town until 1771. By the mid-1770s, a few families were living in town, clearing land and

building shelters for themselves and their livestock. With access to Lake Champlain and a hill looking across the lake towards Fort Ticonderoga, the military base, Mount Independence was constructed by the American colonial forces in 1776. It was one of the largest military complex communities in North America. The 300-acre site is now one of Vermont's premier state-operated historic sites.

Panton

Panton sits on the shores of Lake Champlain, in the western, central area of Addison County. Views to the Lake, the Adirondack Mountains, agricultural landscape and narrow roads along lake inlets and tributaries make Panton an intriguing town. 22A is the primary designated byway route, with Panton Road/Lake Street the secondary route. These roads are also part of the Champlain Valley bikeway. Other recreational features include trails up Snake Mountain, and fishing and camping near the lake. Historic buildings include the Town Hall, Ferris Homestead site, and various school houses. The Town of Panton Selectboard voted to become a member community in the Lake Champlain Byway in 2011.

Governor Benning Wentworth of New Hampshire signed the Panton charter of 1761. This original document as well as all of its early records dating back to pre-Revolutionary times exists in the Town's vault. Panton has a dramatic, if virtually unknown, history that helped to create the very beginning of our country. Benedict Arnold was a hero of the times by delaying the British from taking Lake Champlain. He was acquainted with Peter Ferris of Panton and chose his bay to scuttle his fleet and save them from being captured by the British.

Shoreham

Shoreham was instrumental in the 1775 capture of Fort Ticonderoga when the Green Mountain Boys launched from its shores. Agriculture has always been a mainstay of the Shoreham economy. Merino sheep were first imported in 1816. For much of the 19th century they brought wealth and recognition to the town. Now dairy cattle outnumber sheep.



Over the years Shoreham has had carding mills, an ax handle factory, an iron forge, sawmills, grist mills, and a quarry producing some of the best black marble in the country. Agriculture is still prevalent in the town today with several apple orchards. There are several access points to Lake Champlain for boating and fishing.

Vergennes

Just two square miles, Vergennes bills itself as America's smallest city and was named in honor of the Comte de Vergennes who served as the French Minister of Foreign Affairs and negotiator of the Treaty of Paris. Just west of downtown are the scenic Vergennes Falls where Otter Creek traverses the city and water-powered sawmills once operated. The City Hall and Vergennes Opera House, constructed in 1897, is still the center of Vergennes' business and cultural life. The beautifully restored, acoustically superb Opera House presents year-round jazz, opera, folk, classical and theater performances. A walk down Main Street brings you by Bixby Library, with its beautiful stained-glass domed ceiling. A detour down the sidewalk-lined side streets takes one past houses that speak of the city's 19th century prosperity.



See maps in the appendix for a summary of Byway features by town.

Whiting

Chartered in 1763 the town of Whiting is currently home to 420 residents. The town borders Otter Creek and approximately one third of the town's land is occupied by what is now known as the Cornwall Swamp Wildlife Management area. Otter Creek originally contained no valuable fish until a resident transferred various species from Lake Champlain into the creek in 1819 making it an excellent source for fishing. The Whiting Swamp, land recently purchased by the Nature Conservancy, provides access for fishing, boating and hiking.



Chapter 3 Elements of the Corridor Management Plan

Why a New Plan?

This Corridor Management Plan (CMP) seeks to document the towns, their intrinsic resources, and the partners of the Byway, and to create a roadmap for the upkeep, integrity and relevance of the Byway.

The last Addison County Byways Corridor Management Plan was written in 2000. Since 2000, more towns have become official byway towns and there have been many national, state and regional changes which impact the Byway and how they are used, understood and funded.

Currently, federal funding for the Byways program has been eliminated. If this funding were to return, it will be advantageous to have a clear set of goals and action items to put forward. In the meantime, this program is administered by the Lake Champlain Byway Council, Regional Planning Commissions and many other partners invested in the celebration of recreational, historic and cultural resources of this region. A CMP is essential in bringing stakeholders together.

The Byway program must fit into the present economic, environmental and political climate. It must recognize the needs and desires of the local traveler, and recognize opportunities to incorporate energy conservation, alternative transportation opportunities, and the promotion of local farms, food and other Vermont businesses.

14 Recommended Elements

The Federal Highway Administration and the Vermont Agency of Transportation recommend having the following elements in a CMP:

- (1) A map identifying the corridor boundaries and the location of intrinsic qualities and different land uses within the corridor.
- (2) An assessment of such intrinsic qualities and of their context.
- (3) A strategy for maintaining and enhancing those intrinsic qualities. The level of protection for different parts of a National Scenic Byway or All-American Road can vary, with the highest level of protection afforded those parts which most reflect their intrinsic values. All

nationally recognized Lake Champlain Byway should, however, be maintained with particularly high standards, not only for travelers' safety and comfort, but also for preserving the highest levels of visual integrity and attractiveness.

- (4) A schedule and a listing of all agency, group, and individual responsibilities in the implementation of the corridor management plan, and a description of enforcement and review mechanisms, including a schedule for the continuing review of how well those responsibilities are being met.
- (5) A strategy describing how existing development might be enhanced and new development might be accommodated while still preserving the intrinsic qualities of the corridor. This can be done through design review, and such land management techniques as zoning, easements and economic incentives.
- (6) A plan to assure on-going public participation in the implementation of corridor management objectives.
- (7) A general review of the roads or highway's safety and accident record to identify any correctable faults in highway design, maintenance, or operation.
- (8) A plan to accommodate commerce while maintaining a safe and efficient level of highway service, including convenient user facilities.
- (9) A demonstration that intrusions on the visitor experience have been minimized to the extent feasible, and a plan for making improvements to enhance that experience.
- (10) A demonstration of compliance with all existing local, State, and Federal laws on the control of outdoor advertising.
- (11) A signage plan that demonstrates how the State will insure and make the number and placement of signs more supportive of the visitor experience.
- (12) A narrative describing how the National Scenic Byway will be positioned for marketing.
- (13) A discussion of design standards relating to any proposed modification of the roadway. This discussion should include an evaluation of how the proposed changes may affect the intrinsic qualities of the byway corridor.

(14) A description of plans to interpret the significant resources of the scenic byway.

b. In addition to the information identified in Paragraph 9a above, corridor management plans for All-American Roads must include some combination of outstanding scenic, natural, historic, cultural, archeological and/or recreational assets.

Chapter 4 Intrinsic Qualities

What is an Intrinsic Quality?

An intrinsic quality is defined as: “features that are considered representative, unique, irreplaceable, or distinctly characteristic of an area. Intrinsic qualities arise from a particular combination of resources along a byway that together define its character, interest and appeal.”

The National Lake Champlain Byway program places intrinsic resources into six categories:

- scenic
- outdoor recreation
- historic
- natural
- cultural
- archeological

Outdoor recreation: Both active and passive recreation features, such as state and local parks, reforestation areas, hiking trails, water access points, bike and pedestrian trails, indoor recreation facilities, and cross-country and downhill ski areas.

Historic Quality encompasses legacies of the past that are distinctly associated with physical elements of the landscape, whether natural or manmade, that are of such historic significance that they educate the viewer and stir an appreciation for the past. The historic elements reflect the actions of people and may include buildings, settlement patterns, and other examples of human activity. Historic features can be inventoried, mapped, and interpreted. They possess integrity of location, design, setting, material, workmanship, feeling, and association.

Scenic Quality: the heightened visual experience derived from the view of natural and manmade elements of the visual environment of the scenic byway corridor. The characteristics of the landscape are strikingly distinct and offer a pleasing and most memorable visual experience. All elements of the landscape--landform, water, vegetation, and manmade development--contribute to the quality of the corridor's visual environment. Everything present is in harmony and shares in the intrinsic qualities.



Natural Quality: found in unusual geologic formations, topography, climate, hydrologic features, wildlife, and habitats for rare or endangered species.

Cultural Quality is evidence and expressions of the customs or Traditions of a distinct group of people. Cultural features including, but not limited to, crafts, music, dance, rituals, festivals, speech, food, special events, vernacular architecture, etc., are currently practiced. The cultural qualities of the corridor could highlight one or more significant communities and/or ethnic traditions.

Archeological Quality involves those characteristics of the scenic Byways corridor that are physical evidence of historic or prehistoric human life or activity that are visible and capable of being inventoried and interpreted. The scenic byway corridor's archeological interest, as identified through ruins, artifacts, structural remains, and other physical evidence have scientific significance that educate the viewer and stir an appreciation for the past.

Intrinsic Assessment

Addison's Byway abounds with these intrinsic qualities. The **visual, scenic experience** includes both broad vistas and intimate scenes. The visual landscape is framed by extensive views of several unique geographic features. To the west, are the vast Adirondack Mountains while in the foreground is Lake Champlain. To the east lie the Green Mountains. The valleys are lush with wetlands, forests, meadows, and orchards. Towns are nestled into the hills, back dropped by views west and east.

Recreation opportunities are in close proximity to the Byway routes, including opportunities for hiking, cycling, winter sports, boating, bird-watching, horseback riding, leaf-peeping, fishing, hunting and camping. Needless to say, opportunities abound in this landscape. Numerous bed and breakfasts, including farm B and B's can be found in Addison byway towns.

The landscape and built environment are testament to the **history of the area**. Colonial era homes and civic buildings are around every corner. Old barns, fences, stone walls tell the tale of Addison's agricultural legacy. The Rokeby museum offers stories, images and artifacts which speak to pivotal historical events such as the Underground Railroad, early settlement in Vermont and religious conflicts.

The **natural features** of the area – the hills, valleys, waterways, meadows and forests shape the landscape and provide unique, identifiable character to each town. They are vital wildlife habitats and distinguish Addison County as a rural county. Sighting osprey, deer, bobcat and many other animals is a common occurrence and part and parcel to visiting this area.



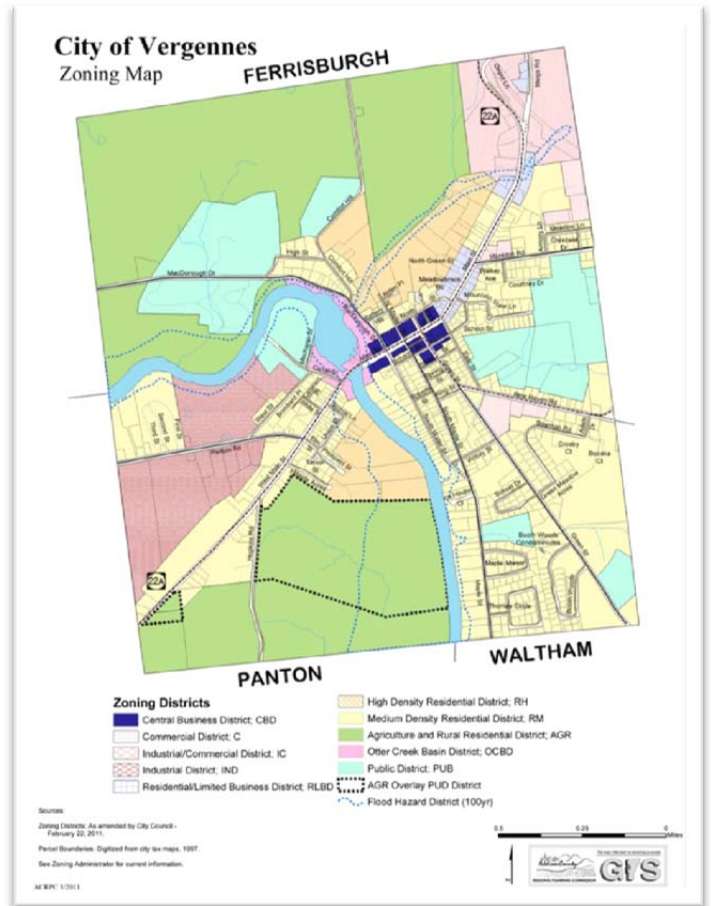
Vergennes and Middlebury are the biggest towns within the Addison County byway towns. For this reason they are synonymous with larger festivals and other **cultural events**. Farmers markets, summer music festivals and recreational events, such as running and cycling fundraisers happen throughout the year. Middlebury hosts *Festival on the Green*, *Vermont Chili Festival*, *Very Merry Middlebury*, *Cheese and Wine Festival*, *CiderFest*, *Friday Arts Walk*, to name a few. Such events have become tradition in the county, not to mention other agricultural related events that happen in the more rural towns. Addison's long running *Fair and Field Days*, and Shoreham's new tradition of *Apple Fest*, and *Pirate Day* at the Maritime Museum in Ferrisburgh are a few examples.

Archeological elements within the byway towns are harder to detect. Thankfully experts at the Maritime Museum, the Rokeby Museum, and the Vermont Folk life Center in Middlebury are some of the keepers of this information, all of which are places along the Byways which visitors can explore, not to mention the historical societies within each town.

Opportunities and Impacts

As noted in the most recent work sessions and survey, hosted by the Lake Champlain Byway Council, there is ample room for improving our Byway. The Byway identifies scenic, recreational and cultural journeys and destinations. In this way they are conduits for both local adventurers and tourists. They bring attention to places of interest and in this way can be a way to support the small, rural towns and villages, farmers and business owners who are in close proximity.

Tourism has always been an economic necessity for Vermont. In this way, the unique, rural landscape, agricultural presence, outdoor recreational opportunities, and walkable town centers are the fabric keeping the tourist economy in place.



Town Planning and Community Design

Town planning and cultural programming is essential in cultivating places that people wish to visit and for preserving the unique natural and agricultural landscape that define Addison County. Town's along the Route 7 corridor, such as Vergennes, Ferrisburgh and Middlebury have a particular challenge to keep sprawl development from impacting this scenic corridor. Cornwall and Whiting, located along Route 30, have to make efforts to slow traffic and welcome visitors to stop and linger. Robust town plans, zoning regulations and design standards must be in place in order to accomplish these goals.

Multimodal

To fit within Vermont's current State and regional goals, such as the Vermont State Energy Plan and Vermont's Agency of Transportation's (VTRANS) policies for multi-modal opportunities. The Byway must incorporate walking, cycling, and public transportation opportunities alongside the car.





Addison County Transit Resources (ACTR) is Addison County's regional public bus system. ACTR provides opportunities to travel from Middlebury, Vergennes and Bristol, with stops in-between. Bikes can be placed on the front of all of these buses. There is also bus route connection between Rutland (the Rutland Connector), Middlebury and Burlington daily. There are seasonal train tours through Addison County with the Ethan Allen Express. Vermont Rail hopes to expand travel through this north-south corridor in the next five years, contingent on bridge work in the Town of Middlebury.

National and State efforts which advocate and support increased opportunities for safe walking and cycling are increasing. The Vermont *Safe Routes To School* Program, VTRANS's *Alternative Transportation Grants* and other State and Federal grants are allowing towns to pursue the implementation of trails, sidewalks and road striping for safer cycling.

Offering opportunities to get out of the car create a welcoming and interesting environment to both local and non-local travelers.

Multi-destination

It is essential that all byway sites identified within the Lake Champlain Byway share resources and opportunities in order to become more financially feasible and sustainable into the future. Ideas such as event calendar sharing and 'suggested routes and stops' will serve this purpose.

Please see Chapter 5 for more on strategies.

Waypoint Communities

In the previous management plan, *Waypoint Communities* were identified as communities along a byway that offer (or have the potential to offer) multimodal transportation, visitor services and amenities, traveler information, public restrooms, and can serve as a 'hub' to other nearby resources. Addison's larger waypoint communities, along the current Byways, are Vergennes and Middlebury.

Since the last management plan it is clear that now, both Shoreham and Orwell also have the potential to provide waypoint amenities and services in the more rural byway

areas. Ferrisburgh is also well situated to be a waypoint community in the future. Byway goals and features should be considered in any economic development for these and all byway towns.

Focus Areas

Based on Addison County's characteristics, past byway committees have recognized Addison County's strongest attributes to be agriculture (local food) and outdoor recreation. These areas can guide priority partnerships and theme ideas for byway planning in Addison County.

Agriculture

In the past 10 years, the local Farm and Food movement has grown at an unprecedented rate. Addison County has over 250 diversified farms which are described and mapped in the Local Farm and Food Guide published by Addison County Relocalization Network (ACORN) and the Addison Independent. *The Vermont Food Systems Atlas* is another great resource for finding local food/routes partnerships. The Addison County Farm Bureau continues to showcase Addison County's agricultural legacy.

In Addison County there are year-round farmers markets and food-related festivities in numerous byway towns. Shoreham has their Apple Fest in September, Middlebury their Chili Festival in March, Cornwall their strawberry festival in June – and the list goes on. Local food is the buzz word of the decade and Addison County has much to showcase.

Recreation

Opportunities for outdoor recreation abound in Addison County. The byway towns, and their neighboring towns offer hiking, birding, water sports, cycling routes and tours, including sections of the Lake Champlain Bikeway, snow sports, such as Nordic skiing, snow shoeing, ice-skating and snowmobiling on nearby VAST trails.



Byway planning needs to consider people's love of being out of their cars. Suggested trips need to consider a visitors ability to get out of their car and move by foot, bike, and/or boat from one destination to another –thinking about recreation in the context of the journey and not just the final destination.

See appendix for the 2014 water recreation map.

Chapter 5 Strategies for Maintenance and Enhancement

Plan Objectives and Goals

The objective and purpose of the corridor management plan is to conserve the intrinsic values of a byway in sustainable balance with economic development and tourism. It is a process to identify and document resources with broad community involvement, monitoring and continued advocacy.

The corridor management plan is to reflect the community's vision of their Byway with an implementable action plan to establish and maintain the byway. The development of the plan is expected to be a grass-roots driven process.



GOALS for the Addison County Corridor of the Lake Champlain Byway:

INTRINSIC RESOURCES

To promote and celebrate the cultural, scenic and recreational resources within the byway corridor.

ECONOMIC DEVELOPMENT

To highlight and enhance tourism opportunities at the local and regional level.

TRANSPORTATION

To evolve multi-modal transportation options within the byway corridor to reflect regional and local transportation goals.

Maps

Mapping and interactive website resources are a critical piece in marketing the Lake Champlain Byway. Byway web content, accessible via www.lakechamplainbyway.com can be regularly updated.

Byway maps highlight recreational, historic, natural and cultural points of interest. There is a separate map for water-related recreation. *See appendix and embedded links for associated byway maps.*

Partners

The current partners in Addison County for Lake Champlain Byway efforts are:

- Lake Champlain Byway Council
- Addison County Chamber of Commerce
- Rokeby Museum
- Addison County Site Managers
- Town of Middlebury
- Addison County Walk-Bike Council

- Addison County Regional Planning and Transportation Advisory Committee (TAC)
- Town of Bristol
- Town of Ferrisburgh
- City of Vergennes
- Town of Panton
- Town of Addison
- Town of Shoreham
- Town of Orwell
- Town of Cornwall
- Town of Whiting

Potential Partners

- Addison County Economic Development Corp.
- Addison County Re-localization Network (ACORN)
- Addison County Transit Resources (ACTR)
- Lake Champlain Basin Program
- Lake Champlain Bikeways
- Middlebury Downtown Business Association
- Vermont Agency of Transportation
- Vermont Department of Forests and Parks
- Vermont Division for Historic Preservation
- Vermont Farm Bureau
- Other Addison County Towns
- Historical Societies
- Crown Point Road Association
- George D. Aiken Resource Conservation and Development Council
- Hannaford Career Center
- Heart of Vermont Lodging Association
- Otter Creek Audubon Society
- Otter Creek Natural Resources Conservation District
- Middlebury Area Land Trust (MALT)

Recent Planning Activities and Recommended Actions

2014 Site Manager Survey

In the spring of 2014 the Lake Champlain Byway Council sent out a survey to forty seven sites along the Champlain Byway, which included the Addison County sections. The survey was available for two months. The intention of the survey was to better understand the opportunities, challenges and current use of the sites along the byway, and how efforts between site managers could be coordinated.



Survey Categories covered included:

Operational – when is the site open, who is coming, how many are coming and who are the site managers trying to attract?

Interpretive programming – are there paid/unpaid interpretive staff, what kind of interpretive methods/material/special programs and what is most popular of these?

Interpretive Themes – what, if any, is the interpretive theme of the site?

Outreach Services and Marketing – what outreach services do the sites use and are site managers interested in a joint membership and/or discount ticket program?

2014 Survey Conclusions

1. Majority of sites have no paid or volunteer interpretive staff
2. Printed material, followed closely by special programs are the most popular interpretive materials
3. Outdoor interpretive panels and exhibits are the next most popular programming
4. Answering questions and providing demonstrations are the primary interpretive staff interactions with the public

- Byway theme of the year
- Who's in Our World – within a 30 min drive
- Routes 'the journey is part of the experience'
- Start a 'Byways club'
- Attract locals
- Develop exit survey for site visitors
- Engage the for-profit sector
- Better way-finding
- Building critical mass among year round facilities
- Share major events on an updateable, on-line calendar

10 Action Items for Byway Coordination Efforts

Based on the May 6th discussions and the above mentioned survey responses, Landslide Inc. wrote a summary report - The Lake Champlain Byway Interpretation Coordination Plan.

This document contains recommended action items to increase the success of the Lake Champlain Byway program and associated sites.

The following Action items pertain to Addison County, and are recommended tasks to pursue to increase the functionality of sites along our Byway, and encourage visitors to our byway towns:

2014 Site Manager Meet-Up

On May 6th, 2014 the LCBC hosted a site manager meet-up at Shelburne Museum. Seventeen sites participated and shared experiences, beneficial partnerships, barriers to success and opportunities for collaboration.

Collaborative, statewide projects/programs were identified that benefit more than one site along the LCB. Sites in Addison County benefit from the following:

- Lake Champlain Basin Program
- Local Motion
- Green Coupon
- VT Department of Tourism and Marketing

Project Ideas

The following were project ideas from the meeting:

- Develop a specific, unifying theme of alternative transportation corridors (bicycling and international waterway)
- Suggested itineraries

**Lake Champlain Byway
2014 Identified Tasks for Interpretation
Coordination**

1. Share major events on an updateable, on-line calendar to increase awareness of on-going activities and special events, updated by site managers throughout the year.
2. Who's in Our World (within a thirty minute drive)— produce a spreadsheet that outlines proximity of sites and other venues to each byway feature
3. Provide 'suggested itineraries' or 'routes' for visitors based on proximities - 'go on historic place walk, see the views at point view, go for swim here and end up at pub X'.
4. With the Lake Champlain Byway Council, develop annual unifying theme for the Lake Champlain Byway – building programming and events around a theme.
5. Consider focusing efforts on alternative transportation opportunities along Byway – cycling, boating, and train, especially as a way to attract locals.
6. Start a 'Byway Club' to incentive visiting all sites along a byway.
7. Work with the Lake Champlain Byway Council to develop an 'exit survey' for visitors.
8. Attract locals by weaving 'stay-cation' and 'buy local' campaigns into marketing the Byway.
9. Engage the for-profit sector. For-profit businesses should provide a symbiotic relationship to the Byway. Meet with these potential partners.
10. Improve way-finding. With the Lake Champlain Byway Council develop both on-line and pdf versions of routes, and consider a common family of signs.

Based on these tasks, the following recommended actions can be identified for Addison County, specifically:

**Lake Champlain Byway:
Addison County Corridor
Recommended Actions**

1. Reinvigorate partnerships between the Lake Champlain Byway Council and a diversity of Addison County stakeholders within the two focus areas of agriculture and recreation: farmers, local food producers, recreation-business owners etc.
2. Create partnerships between fellow Addison County byway towns, byway site managers, local business owners and transportation experts and committees.
3. Create an updated Bike and Pedestrian Regional Plan for Addison County.

Appendix

- A: Brochure, Lake Champlain Byway**
- B: Brochure, Addison County: Guide to activities along the Lake Champlain Byway**
- C: Brochure, Water Recreation Sites of the Lake Champlain Byway**
- D: Brochure, Winter Activities along the Lake Champlain Byway**
- E: 2014 Byway Site Manager Survey Results**

Welcome to Addison County!

Addison County is the southern-most collection of municipalities along the Lake Champlain Byway. (Seven of the county's 23 municipalities are members of the Byway program.) From here you can easily continue your drive and connect to other Vermont Byways—Stone Valley Byway to the south, Mad River Valley Byway to the east, and the Crossroad of Vermont Byway to our southeast.



This region of Vermont is known as “the land of milk and honey” as it is blessed with magnificent natural resources—miles of fertile farmland bordered by the foothills of the Green Mountains and the shores of Lake Champlain. Running through the county is Otter Creek, one of Vermont's most historically significant waterways, and at 100 miles in length, it is the state's longest river. The proximity of lakes, rivers and mountains make Addison County a destination for all varieties of outdoor activities—hiking, biking, skiing, fishing, boating—just to name a few.



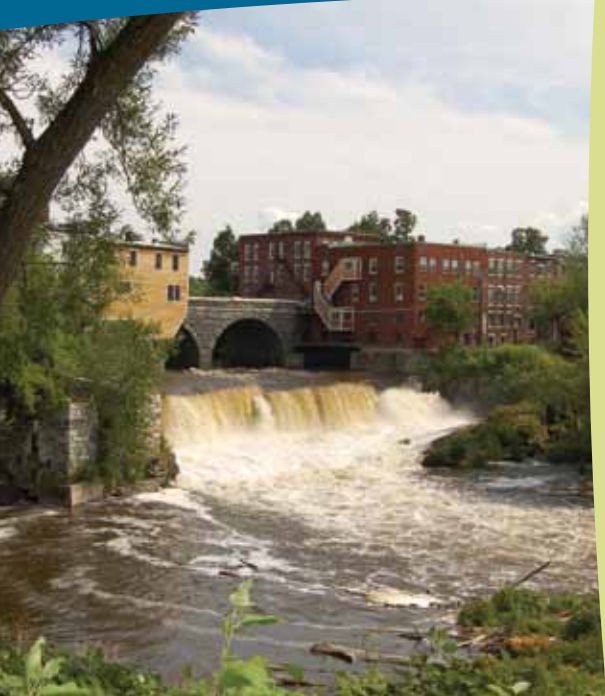
Addison County is rich with history as well as it played a key role in the Revolutionary War and America's road to freedom. Visit the 300-acre Mount Independence State Historic Site or the strategically-located Fort Ticonderoga across the lake. At the Lake Champlain Maritime Museum visitors can experience the lake's rich maritime history by boarding a replica of Benedict Arnold's Revolutionary War gunboat, the *Philadelphia*, or viewing the many other historic vessels and exhibits.

Other historical and cultural gems include Rokeby Museum, a National Historic Landmark and one of the best-documented Underground Railroad sites in America. Middlebury's Henry Sheldon Museum of Vermont History, founded in 1882, is the oldest incorporated village museum in America. The Vermont Folklife Center, also in Middlebury, has been documenting and maintaining the history of Vermont through countless interviews with interesting Vermonters.



The cultural heart of Addison County is Middlebury College, itself a historic treasure founded in 1800. Much of the modern-day cultural activities emanate from the stunning Kevin P. Mahaney Center for the Arts, which on any given day may offer a modern dance recital, concert, or a one-person play. The Museum of Art hosts outstanding exhibits of the college's permanent collection and visiting exhibits. With two beautifully restored theaters, the Vergennes Opera House and Middlebury's Town Hall Theater, Addison County offers concerts, plays and other programs for all tastes.

www.AddisonCounty.com
1-800-SEE-VERMONT



Middlebury

Middlebury, the shire town of Addison County, was chartered in 1761 and was settled just after the Revolutionary War. Today, the village is listed on the National Register of Historic Places and is home to internationally-recognized Middlebury College, many businesses, architecturally distinguished churches and public buildings, as well as approximately 8,200 residents.

Passing through the heart of the historic village is the Otter Creek, the longest river in Vermont. You can see its powerful waterfall from the Battell Bridge and through the windows of the art gallery that was once a mill. In Cannon Park, across from the Henry Sheldon Museum of Vermont History, there is an historic marker commemorating John Deere and his invention of the “the plow that broke the plains.” From 1821 to 1825 Deere apprenticed at an area blacksmith shop. Deere then moved to Illinois where he built the world's first steel moldboard plow.

Historic inns, Town Hall Theater (featuring year-round music, dance, opera and plays), Henry Sheldon Museum, Vermont Folklife Center and The National Museum of the Morgan Horse are all within a ten-minute walk of the Town Green and gazebo. Middlebury College has a full schedule of performing arts events, a Museum of Fine Arts, many outdoor art installations, outstanding college athletics and much more.

Within a short drive from your base in Middlebury, you can visit two covered bridges, several scenic vistas, the University of Vermont Morgan Horse Farm, or several local manufacturers that welcome you to see pewter, wood products or craft-brewed beer being made. If you are looking for exercise jump on the Trail Around Middlebury, which welcomes walkers, bicyclists, cross-country skiers and snow shoe enthusiasts.



Ferrisburgh

Founded in 1762, Ferrisburgh's western boundary is Lake Champlain where much of the shoreline constitutes some of the best natural harbors on the lake. Otter Creek is navigable to Vergennes, a distance of eight miles, and but for the falls there and at Middlebury, the river could be navigated by small craft for a considerable distance.

Two Vermont State Parks are located in Ferrisburgh—Button Bay and Kingsland Bay—offering camping, picnicking, swimming, and boat access. Nearby, the Lake Champlain Maritime Museum shares the rich history and archaeology of Lake Champlain.

Rokeby Museum, a National Historic Landmark, is a 90-acre historic site which is one of the best-documented Underground Railroad sites in the country.

Vergennes

Just two square miles, Vergennes bills itself as America's smallest city and was named in honor of the Comte de Vergennes who served as the French Minister of Foreign Affairs and negotiator of the Treaty of Paris. Just west of downtown are the scenic Vergennes Falls where Otter Creek traverses the city and water-powered sawmills once operated.

The City Hall and Vergennes Opera House, constructed in 1897, is still the center of Vergennes' business and cultural life. The beautifully restored, acoustically superb Opera House presents year-round jazz, opera, folk, classical and theater performances. A walk down Main Street brings you by Bixby Library, with its beautiful stained-glass domed ceiling. A detour down the sidewalk-lined side streets takes one past houses that speak of the city's 19th century prosperity.



Cornwall

Cornwall, in the central part of Addison County, is located four miles southwest of Middlebury. Cornwall was largely an agricultural town, specializing in Merino sheep production, Morgan horses and apple orchards with many dairy farms as well. Today, Cornwall has a few working dairy farms remaining and one fully operating apple orchard.

Natural resources include the Lemon Fair River which crosses the northwest corner and Otter Creek which flows along a part of the eastern boundary. The cedar swamp takes up much of Cornwall's southeast corner, the swamp being several thousand acres. There is a major limestone ledge in the center part of the town.

Shoreham

Shoreham was instrumental in the 1775 capture of Fort Ticonderoga when the Green Mountain Boys launched from its shores.

Agriculture has always been a mainstay of the Shoreham economy. Merino sheep were first imported in 1816. For much of the 19th century they brought wealth and recognition to the town. Now dairy cattle outnumber sheep. Over the years Shoreham has had carding mills, an ax handle factory, an iron forge, sawmills, grist mills, and a quarry producing some of the best black marble in the country.

Agriculture is still prevalent in the town today with several apple orchards. There are several access points to Lake Champlain for boating and fishing.



Orwell

The Town of Orwell was chartered in 1763, but no settlement occurred in town until 1771. By the mid-1770s, a few families were living in town, clearing land and building shelters for themselves and their livestock.

With access to Lake Champlain and a hill looking across the lake towards Fort Ticonderoga, Mount Independence was constructed by the American colonial forces. In 1776 the military complex was one of the largest communities in North America. The 300-acre site is now one of Vermont's premier state-operated historic sites.

Home to approximately 1,200 residents, the community features many farms, orchards, and several access points to Lake Champlain for boating, kayaking and fishing.

Whiting

Chartered in 1763 the town of Whiting is home to less than 400 residents today. The town borders on Otter Creek and approximately one third of the town's land is occupied by what is now known as the Cornwall Swamp Wildlife Management area. Otter Creek originally contained no valuable fish until a resident transferred various species from Lake Champlain into the creek in 1819 making it an excellent source for fishing. The Whiting Swamp, land recently purchased by the Nature Conservancy, provides access for fishing, boating and hiking.



Addison County
Guide to Activities Along the
Lake Champlain Byway
Culture • Nature • History • Recreation



Photos:

Photos courtesy of Addison County Chamber of Commerce unless otherwise noted.

- Front cover: Cornwall hay fields. Courtesy of Kirsten Hoving
- Back cover: Middlebury College Bread Loaf Campus
- Welcome section: top to bottom: Foliage, Addison County; Otter Creek Basin, Vergennes; Farmers Market, Middlebury
- Middlebury: Otter Creek Falls, viewed from Marble Works, Middlebury, Kevin P. Mahaney '84 Center for the Arts, Middlebury College, Middlebury
- Ferrisburgh: Button Bay State Park. Courtesy of LandWorks/Sensible World
- Vergennes: City Hall and Vergennes Opera House, Vergennes
- Cornwall: Cornwall pastures and distant view of Adirondacks
- Shoreham: Shoreham Whiting Covered Bridge
- Orwell: Mount Independence. Courtesy of Mount Independence State Historic Site
- Whiting: Whiting Community Church

This brochure was funded in part by the Federal Highway Administration. The Byway works with the Administration's National Scenic Byways Program which promotes the recognition and enjoyment of America's memorable roads. The Byway works to support unique travel experiences and enhance local quality of life by preserving, protecting, interpreting, and promoting its intrinsic qualities. For more information, visit the Byway's website at www.lakechamplainbyway.com.



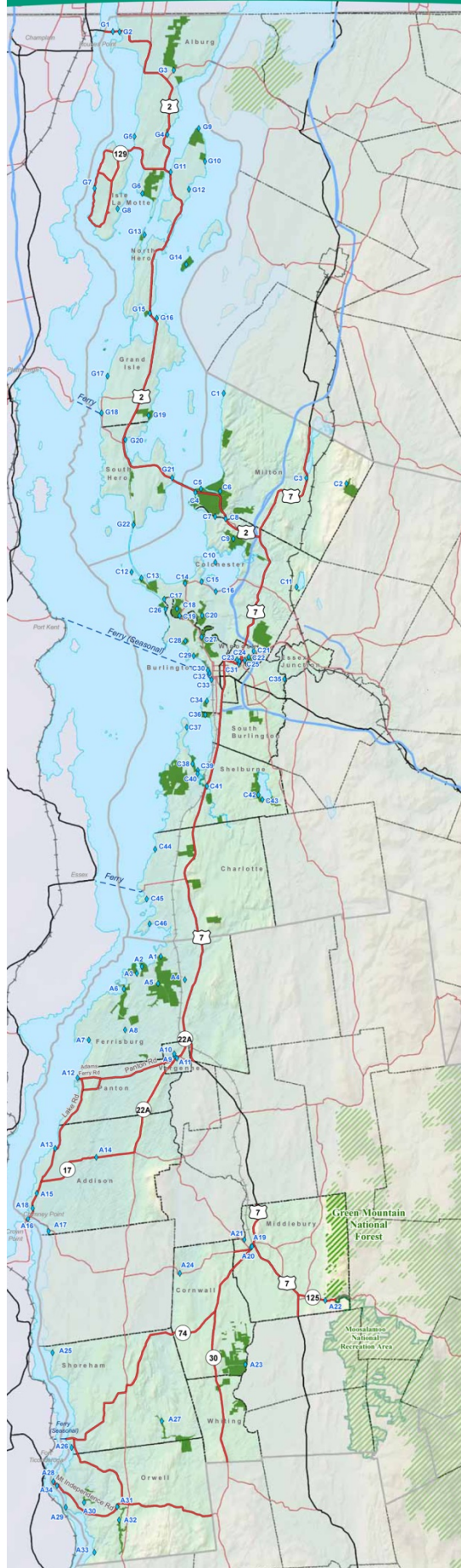
Addison County Chamber of Commerce
93 Court Street/Route 7
Middlebury, VT 05753
P: 800-SEE-VERMONT or 802-388-7951
E: info@addisoncounty.com
W: www.AddisonCounty.com

For more information on the Lake Champlain Byway visit www.LakeChamplainByway.com



Feature	Address	Biking	Boat Launch	Campground	Covered Bridge	Culture	Fishing	Hand Launch	Hiking	Hunting	Info	Library	Marina	Museum	Picnic	Restrooms	XC Skiing/snowshoeing	Swimming	View
Cornwall																			
1	Cornwall Library	2627 Rte 30									X	X					X		
2	Cornwall Swamp Wildlife Management Area	Swamp Rd					X	X	X	X									
3	Cornwall-Salisbury Covered Bridge	700 Creek Rd			X			X											
4	Lemon Fair Wildlife Management Area	3855 Rte 125					X												
5	Old Stone Blacksmith Shop	Park Ln			X														
Ferrisburgh																			
6	Button Bay State Park	5 Button Bay State Park Rd	X	X			X		X									X	
7	Fort Cassin/Otter Creek WMA	Fort Cassin Rd	X				X	X	X	X									
8	Kingsland Bay State Park and Hawley House	787 Kingsland Bay State Park Rd	X				X								X	X	X	X	
9	Lake Champlain Maritime Museum	4472 Basin Harbor Rd				X								X					
10	Lewis Creek	Long Point Rd/ Bay Rd	X				X		X										
11	Long Point	441 Bay Rd	X				X												
12	Rokeby Museum	4334 Route 7			X			X						X	X			X	
13	South Slang/Hawkins Bay	2012 Hawkins Rd	X				X												
14	Spade Farm Covered Bridge	5371 Route 7			X														
15	Town Beach	195 Town Beach Rd																	X
Middlebury																			
16	Addison County Visitors Center	93 Court St										X					X		
17	Halpin Covered Bridge	258 Halpin Cov. Bridge Rd			X														
18	Henry Sheldon Museum of Vermont History	1 Park St			X									X					
19	Isley Public Library	75 Main St									X	X					X		
20	Jessica Swift Park/Mill Street Natural Area	Mill St					X	X							X			X	
21	Marble Works District	137 Maple St					X								X			X	
22	Middlebury College Museum of Art	72 Porter Field Rd			X									X	X	X			
23	Middlebury Gorge Concrete Arch bridge	VT 125/East Main St, E. Middlebury					X								X			X	X
24	Middlebury Historic Village	Town Green & Court Sq			X														
25	Middlebury Recreation Park	Buttolph Dr														X		X	
26	Otter Creek Falls	51 Main St																	X
27	Otter View Park	700 Weybridge St						X								X			X
28	Pulp Mill Bridge	Pulp Mill Bridge Rd/ Seymour St			X			X											
29	Town Hall Theater	68 South Pleasant St				X													
30	Trail Around Middlebury	16 mile trail www.malvt.org	X				X	X	X	X								X	X
31	Travel Kiosk	886 Rte 7 So									X								
32	Vermont Folklore Center	88 Main St				X									X				
Orwell																			
33	Chipman Point	66 Chipman Point Rd	X	X			X	X						X	X	X	X	X	
34	East Creek Wildlife Management Area	44 Mount Independence Rd					X												
35	Mount Independence State Historic Site and Museum	497 Mount Independence Rd				X		X	X					X	X	X	X	X	
36	Orwell Free Library/ Historical Museum	473 Main St				X					X	X		X					
37	Orwell Historic Village Green	Main St Center														X			X
Shoreham																			
38	Lapham Bay	50 Filled Ln	X	X			X												
39	Laramiees Point	222 Hansen Rd	X				X												
40	Platt Memorial Library	279 Main St										X	X				X		
41	Shoreham Covered Bridge	630 Shoreham Depot Rd			X		X												
42	Richville Pond	2442 Richville Rd	X				X	X	X	X									
43	Stone Schoolhouse Museum, Historical Society	3130 Route 22A													X				
Vergennes																			
44	Bisby Memorial Library	258 Main St										X	X				X		
45	City Park	Park St													X				
46	Falls Park	Mechanic St	X			X	X	X	X						X			X	
47	Information Booth	City Park									X								
48	MacDonough Park	MacDonough Dr	X			X	X									X			X
49	McIntosh Memorial Park	2 Park St				X													X
50	Settlers Park	280 Main St	X				X									X			
51	Travel Kiosk	11 No. Main St									X								
52	Vergennes Historic Downtown	2 Park St				X													
53	Vergennes Opera House	120 Main St				X													
54	Veterans Memorial Park	42 East St							X									X	X
Whiting																			
55	Whiting Swamp	Route 30					X	X	X										
Feature	Address	Biking	Boat Launch	Campground	Covered Bridge	Culture	Fishing	Hand Launch	Hiking	Hunting	Info	Library	Marina	Museum	Picnic	Restrooms	XC Skiing/snowshoeing	Swimming	View

Water Recreation along the Lake Champlain Byway



This map is a guide to water recreation sites in the twenty-two communities that comprise the Lake Champlain Byway. For the most up-to-date information please visit our website, www.lakechamplainbyway.com or the websites noted for each location.

Grand Isle County

Alburgh

- G1 - Korean War Veterans Access (VTFW) 878-1564 / vtishandwildlife.com
- G2 - Kelly Bay (VTFW) 878-1564 / vtishandwildlife.com
- G3 - Mud Creek Pond (VTFW) 878-1564 / vtishandwildlife.com
- G4 - Dillenbeck Bay (VTFW) 878-1564 / vtishandwildlife.com
- G5 - Horicans (VTFW) 878-1564 / vtishandwildlife.com
- G6 - Alburgh Dunes State Park 796-4170 / vtstateparks.com

Isle LaMotte

- G7 - Stoney Point (VTFW) 878-1564 / vtishandwildlife.com
- G8 - Holcomb Bay (VTFW) 878-1564 / vtishandwildlife.com

North Hero

- G9 - North Hero State Park 372-8727 / vtstateparks.com
- G10 - Stephenson Point (VTFW) 878-1564 / vtishandwildlife.com
- G11 - North Hero Causeway (VTFW) 878-1564 / vtishandwildlife.com
- G12 - Kings Bay (VTFW) 878-1564 / vtishandwildlife.com
- G13 - North Hero Marina 372-5953 / northhero.com
- G14 - Knight Island State Park 524-6353 / vtstateparks.com
- G15 - Knight Point State Park 372-8389 / vtstateparks.com

Grand Isle

- G16 - Ladd's Landing Marina 372-5320 / laddslandingmarina.com
- G17 - Vantines (VTFW) 878-1564 / vtishandwildlife.com
- G18 - Ed Weed Fish Culture Station (VTFW) 878-1564 / vtishandwildlife.com
- G19 - Grand Isle State Park 372-4300 / vtstateparks.com

South Hero

- G20 - Keeler Bay (VTFW) 878-1564 / vtishandwildlife.com
- G21 - John Guilmette (VTFW) 878-1564 / vtishandwildlife.com
- G22 - Allen Point (VTFW) 878-1564 / vtishandwildlife.com

Chittenden County

Milton

- C1 - Van Everest (VTFW) 878-1564 / vtishandwildlife.com
- C2 - Town Forest and Pond 893-4922 / miltonvt.org
- C3 - Lamolite River Park 893-4922 / miltonvt.org
- C4 - Sand Bar WMA (VTFW) 878-1564 / vtishandwildlife.com
- C5 - Sand Bar State Park 893-2825 / vtstateparks.com
- C6 - Sand Bar Refuge (VTFW) 878-1564 / vtishandwildlife.com
- C7 - Lamolite River (VTFW) 878-1564 / vtishandwildlife.com
- C8 - Sears (VTFW) 878-1564 / vtishandwildlife.com

Colchester

- C9 - Niquette Bay State Park 893-5210 / vtstateparks.com
- C10 - Mallett's Bay Marinas 264-5508 / colchestervt.gov
- C11 - Colchester Pond 863-5744 / wvpd.org
- C12 - Law Island 264-5640 / colchestervt.gov/Recreation
- C13 - Causeway Park and Island Line Trail 264-5640 / colchestervt.gov/Recreation
- C14 - Rosetti Natural Area 264-5640 / colchestervt.gov/Recreation
- C15 - Mallett's Bay (VTFW) 878-1564 / vtishandwildlife.com
- C16 - Bayside Park 264-5640 / colchestervt.gov/Recreation
- C17 - Colchester Point (VTFW) 878-1564 / vtishandwildlife.com
- C18 - Half Moon Cove WMA 878-1564 / vtishandwildlife.com
- C19 - Heinberg Access/Billado Park 264-5640 / colchestervt.gov/Recreation
- C20 - Macrae Farm Park 863-5744 / wvpd.org

Winooski

- C21 - Gilbrook Natural Area 655-1392 / winooski.org
- C22 - Casavant Natural Area/Winooski Nature Trail 655-1392 / winooski.org
- C23 - Millyard Canoe Access 655-1392 / winooski.org
- C24 - Winooski One Hydro Park and Fishway 223-7141 / winooski1hydro.com
- C25 - Winooski River Walk 655-1392 / winooski.org

Burlington

- C26 - Charlie's Boathouse 862-9840 + boat rentals
- C27 - Ethan Allen Homestead 865-4556 / ethanallenhomestead.org
- C28 - Leddy Park 864-0123 / enjoyburlington.com
- C29 - North Beach 864-0123 / enjoyburlington.com
- C30 - Community Sailing Center 864-2499 / communitysailingcenter.org + sailing rentals
- C31 - Salmon Hole Park 863-5744 / wvpd.org
- C32 - Burlington Waterfront 865-3377 / enjoyburlington.com
- C33 - Perkins Pier & Comm. Boat-house 865-3377 / enjoyburlington.com
- C34 - Oakledge Park 864-0123 / enjoyburlington.com

South Burlington

- C35 - Muddy Brook Park 863-5744 / wvpd.org
- C36 - Red Rocks Park 846-4108 / sburirecept.com

Shelburne

- C37 - Shelburne Shipyard 985-3326 / shelburneshipyard.com
- C38 - Shelburne Bay Park 985-9551 / shelburnevt.org
- C39 - Shelburne Bay (VTFW) 878-1564 / vtishandwildlife.com
- C40 - LaPlatte River Marsh Natural Area 229-4425 / nature.org/vermont
- C41 - Shelburne River Park 862-4150 / lch.org
- C42 - H. Laurence Achilles Natural Area 229-4425 / nature.org/vermont
- C43 - Shelburne Pond (VTFW) 878-1564 / vtishandwildlife.com

Charlotte

- C44 - Town Beach 425-3071 / charlottetv.org
- C45 - Converse Bay (VTFW) 878-1564 / vtishandwildlife.com
- C46 - Point Bay Marina 425-2431 / pointbaymarina.com

Addison County

Ferrisburgh

- A1 - Lewis Creek (VTFW) 878-1564 / vtishandwildlife.com
- A2 - Kingsland Bay State Park 877-3445 / www.vtstateparks.com
- A3 - Ferrisburgh Town Beach 877-3429 / ferrisburghvt.org
- A4 - Little Otter Creek WMA 878-1564 / vtishandwildlife.com
- A5 - South Slang (VTFW) 878-1564 / vtishandwildlife.com
- A6 - Fort Cassin (VTFW) 878-1564 / vtishandwildlife.com
- A7 - Button Bay State Park 475-2377 / vtstateparks.com
- A8 - Tom's Marine 475-2465 / toms-marine.com

Vergennes

- A9 - Falls Park 877-2841 / vergennes.org
- A10 - MacDonough Park 877-2841 / vergennes.org
- A11 - Settlers Park 877-2841 / vergennes.org

Panton

- A12 - Arnold Bay Town Boat Access 475-2333

Addison

- A13 - Potash Bay Town Access 759-2020 / addisonvt.org
- A14 - Dead Creek (VTFW) 878-1564 / vtishandwildlife.com
- A15 - B.A.R. State Park 759-2354 / vtstateparks.com
- A16 - Chimney Point (VTFW) 878-1564 / vtishandwildlife.com
- A17 - McCuen Slang (VTFW) 878-1564 / vtishandwildlife.com
- A18 - Champlain Bridge Marina 759-2049 / sayahoy.com

Middlebury

- A19 - Mill St Access & Natural Area 388-8100 ext 205 / townofmiddlebury.org
- A20 - Otter Creek Falls 388-8100 ext 205 / townofmiddlebury.org
- A21 - Otter Park 388-8100 ext 205 / townofmiddlebury.org
- A22 - Middlebury Gorge Arch Bridge 388-8100 ext 205 / townofmiddlebury.org

Cornwall

- A23 - Cornwall Swamp WMA 878-1564 / vtishandwildlife.com
- A24 - Lemon Fair WMA 878-1564 / vtishandwildlife.com



VTFW - Vermont Dept. of Fish & Wildlife Fishing Access Area
WMA - Wildlife Management Area
Area code for all phone numbers is (802)

Shoreham

- A25 - Lapham Bay (VTFW) 878-1564 / vtishandwildlife.com
- A26 - Larrabees Point (VTFW) 878-1564 / vtishandwildlife.com
- A27 - Richville Pond (VTFW) 878-1564 / vtishandwildlife.com

Orwell

- A28 - Buoy 39 Marina 948-2411 / buoy39marina.com
- A29 - Chipmans Point Marina 948-2288
- A30 - Plunder Bay Marina 948-2330 / plunderbayvt.com
- A31 - East Creek 1 (VTFW) 878-1564 / vtishandwildlife.com
- A32 - East Creek 2 (VTFW) 878-1564 / vtishandwildlife.com
- A33 - George Davis (Singing Cedars) (VTFW) 878-1564 / vtishandwildlife.com
- A34 - Mount Independence (VTFW) 878-1564 / vtishandwildlife.com



© Jack Rowell, courtesy of Lake Champlain International



Kevin Rose, courtesy of Lake Champlain Committee



Town of Colchester



South Burlington Parks and Recreation

Winter Activities

along the Lake Champlain Byway

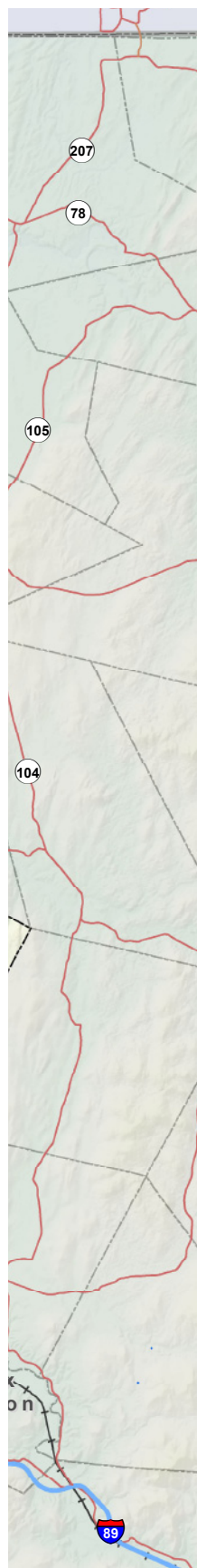
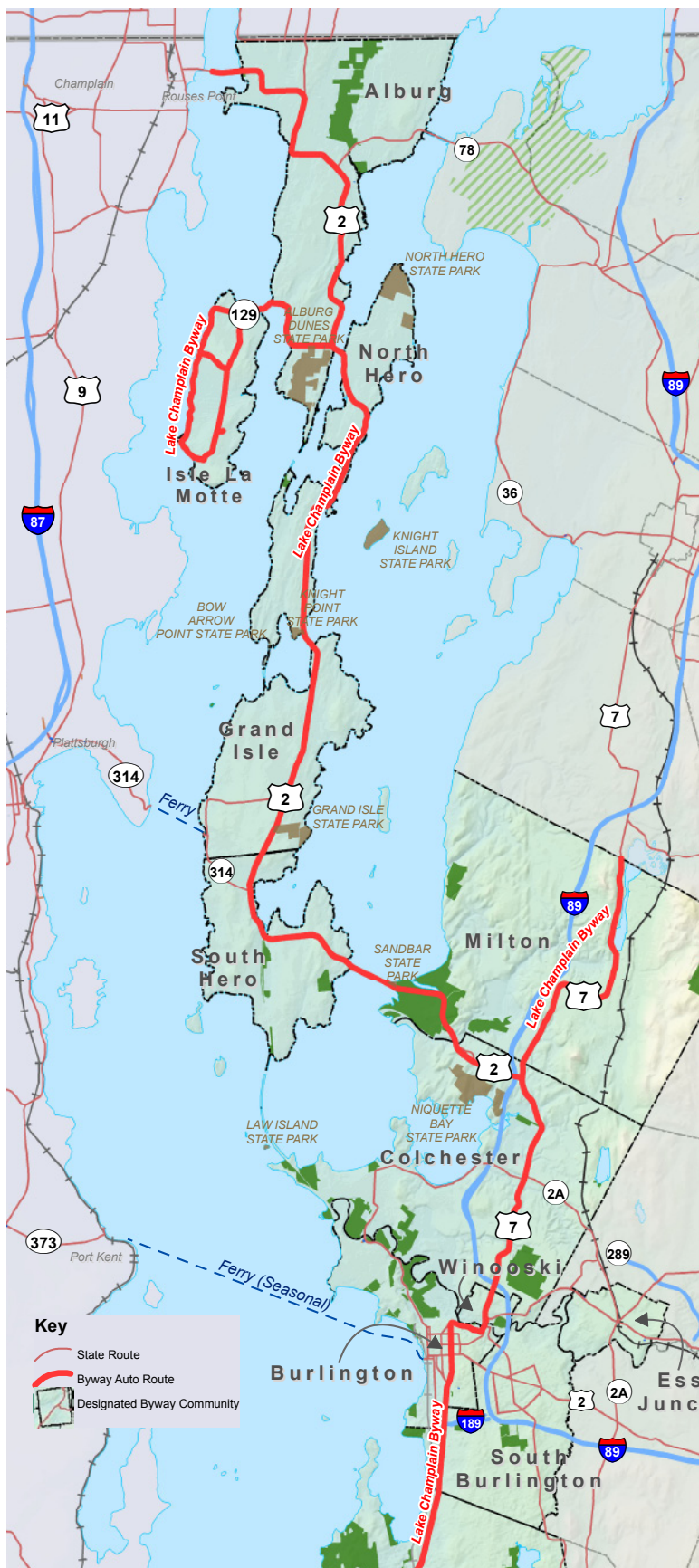


This brochure was funded in part by the Federal Highway Administration. The Byway works with the Administration's National Scenic Byways Program which promotes the recognition and enjoyment of America's memorable roads. The Byway works to support unique travel experiences and enhance local quality of life by preserving, protecting, interpreting, and promoting its intrinsic qualities. For more information, visit the Byway's website at www.lakechamplainbyway.com.



Photo: VermontVacation.com/Dennis Curran





Alpine Skiing & Snowboarding

Known for their exceptional conditions and panoramic views, Vermont's famous alpine ski resorts are a favorite destination for beginners and experts alike. Although there are none in the Byway's towns, several are within an hour's drive, dotting the spine of the Green Mountains. In addition, many Byway towns host ski shops for rentals and expert advice.



Ice Fishing

Whether you're experienced or new to the sport, ice fishing is a wonderful way to take advantage of the brisk and beautiful Vermont winter. Lake Champlain is one of Vermont's premier fishing destinations. Ice fishing season usually lasts from January through March. Visit www.vtfishandwildlife.com for local safety tips, license information, and more.

X-C Skiing & Snowshoeing

The perfect way to experience one of Vermont's many sunny winter days. A variety of Nordic ski areas can be found close to the Byway. Most public parks and natural areas also allow cross-country skiing and snowshoeing at no cost. Bundle up, pack a hot thermos lunch and bring the family for a day of exploring Vermont's renowned outdoors.



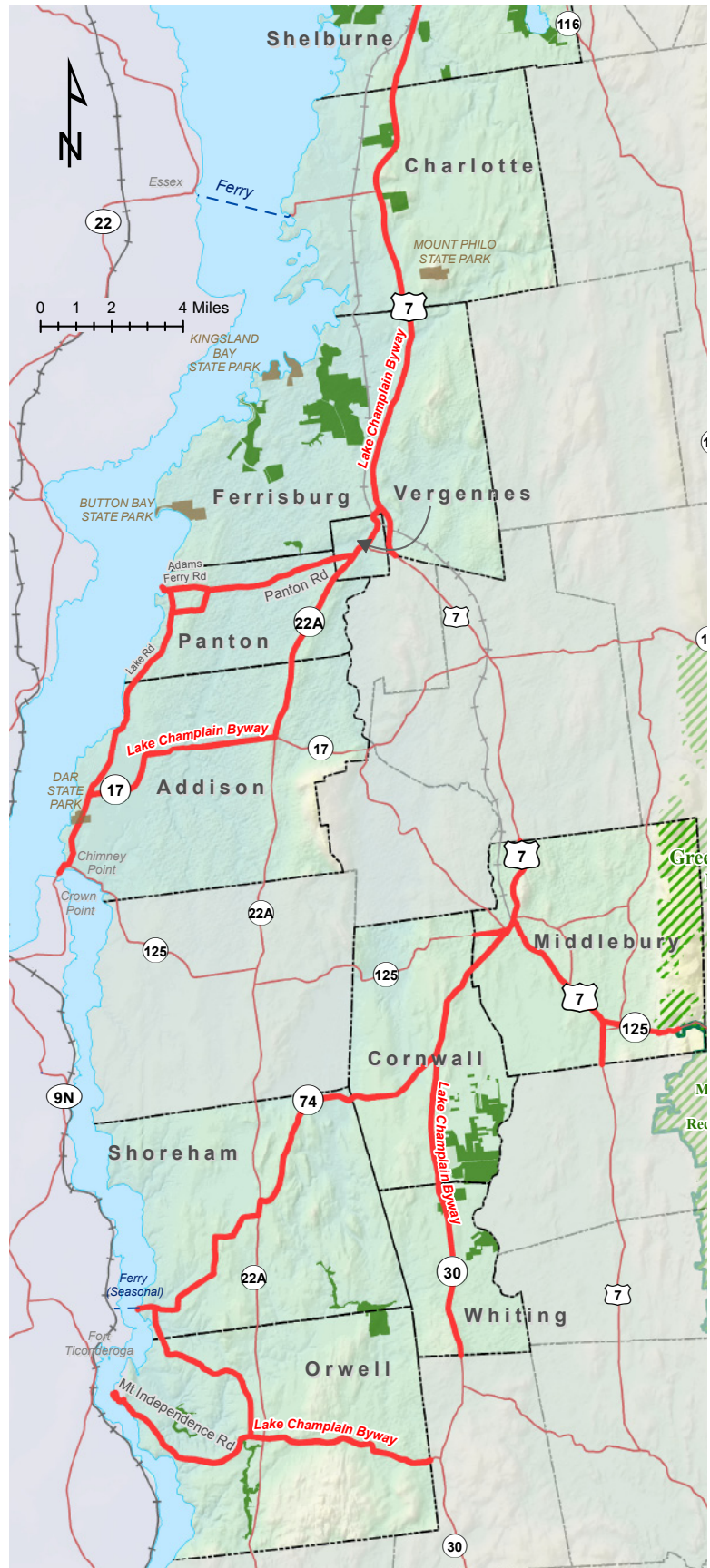
VermontVacation.com

Ice Skating

There are a number of indoor and outdoor skating rinks to enjoy along the Byway. Leddy Arena in Burlington, Cairns Arena in South Burlington, and Memorial Sports Center in Middlebury all offer public skating and rentals. Many Byway towns also create impromptu outdoor skating areas; check the Recreation Department pages of the towns' websites for details and locations.



Vermont Department of Fish & Wildlife



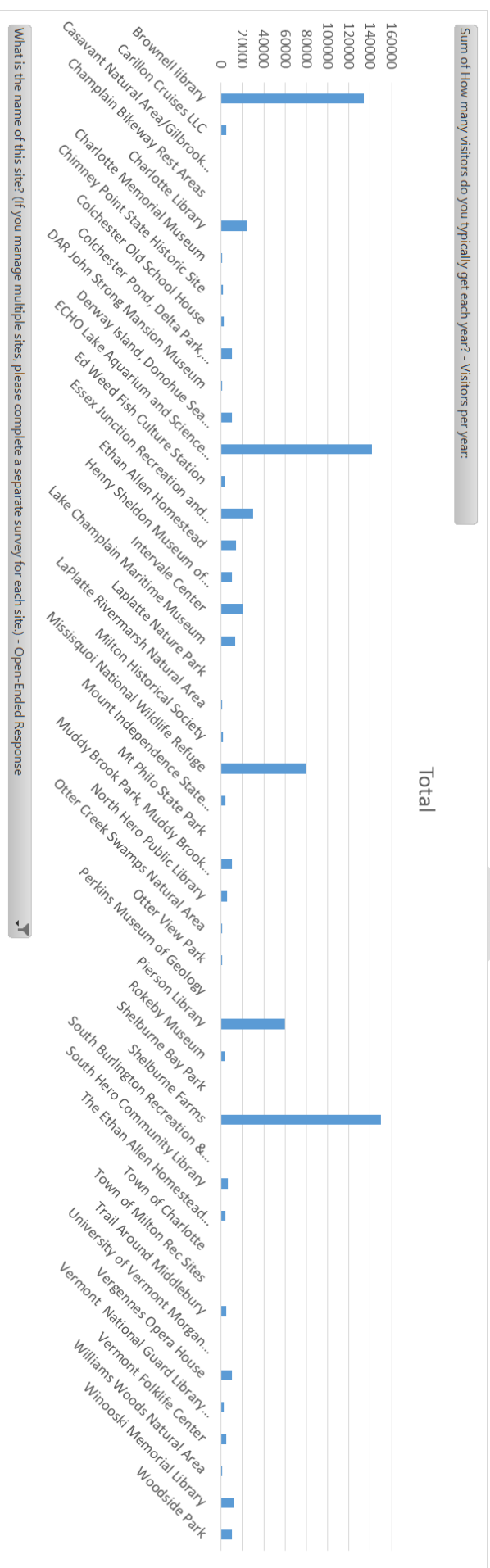
LCBC Survey Results 5/1/14

46 Sites responded

What are your months of operation?

34 sites are open year round; 7 sites are open 5-6 months; 3 sites are open summer only.

How many visitors do you get per year?



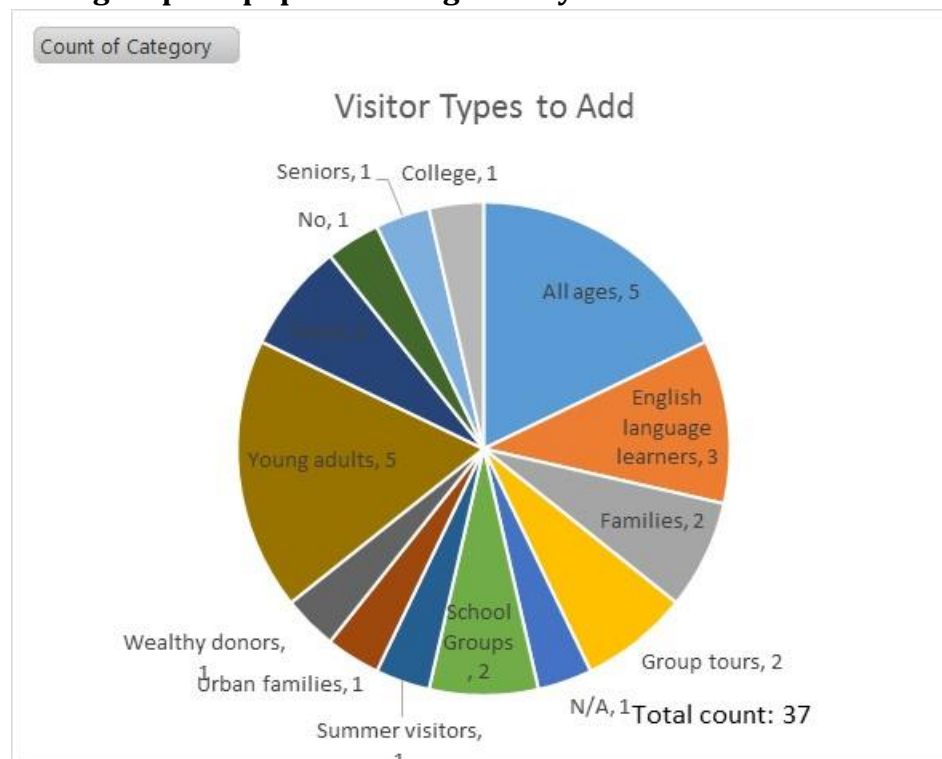
36 respondents 0 to 150,000 visitors per year.

Of the Following Demographics, select the two categories that comprise the majority of your visitors:

School Groups	Adults	Families with Children	Other	Seniors
19	38	31	4*	13

* Water fowl hunters; developmentally delayed adults and their aides; Bus tours, horse enthusiasts, national historic site; seniors.

Are there other groups or population segments you would like to attract?



How many paid, full time equivalent, interpretive staff do you have at your site?

22 of 38 have none.

5 have 0.25 to 1.75

11 have 3 to 28

How many paid, full time equivalent, seasonal interpretive staff do you have at your site?

24 of 39 have none

3 have .5 to .8

12 have from 1 to 6

How many volunteer, full time equivalent, interpretive staff does your site have?

24 of 38 have none

5 have 0.5 to 3

11 have 4 to 30

How many volunteer, full time equivalent, seasonal interpretive staff do you have at your site?

21 of 37 have none

9 have 0 to 4

6 have 10 to 36

Which of the following programs do you currently have at your site?

Printed materials - 31	Touch screen - 4
Exhibits - 22	Computer station - 7
Outdoor interpretive panels - 22	Hand held devices - 1
Hands on/interactive experiences - 15	Interpretive staffing - 13
Audio/Video - 16	Special programs and events - 28

Other - 12

guided tours of property; Cruise boat on Lake Champlain w/ narrative; Storytimes, LEGO club, gaming events, etc; impromptu interp by regular staff; 3D theater, object theater, live animals, augmented reality; the museum building and the historic site itself, website; the historic building and landscape itself, website; Monthly Lectures; Hologram, Dark room; Working Farm, Barn tours; events; outdoor gardens.

Which of your interpretive programs are most successful?

brochure	monthly programs and special events, as well as our annual printed newsletter	it's the combination of the above with the historic landscape
outdoor interpretive panel	Storytime	they all work together, difficult to isolate. Exhibits?
property tours	hikes	Special Programs and Events (10 entries)
All	Outdoor interpretive panels	visits to Allen House
Printed material Local history programming	Tour	Exhibit and guided house tour
Exhibits	Childrens fishing festival in June	hands-on , interpretive staffing; help with materials
International Migratory Bird day, Junior Waterfowl Training	hands-on exhibits, live animals	Exhibits (2)

If you have interpretive staff, please select all of the ways they interact with and educate visitors (check all that apply)

Tours – 16	Guided hikes – 10
Answer questions – 24	Classes – 9
Demonstrations – 19	Other - 9

Other

Our Youth Librarian will soon be providing early literacy education classes to parents; Technicians provide tours to school groups only all others are self-guided tours; short films, citizen science; special orientations, help with special events and programs; Story times; Educational handout materials are available online, including assessments, treasure hunts, Drawing; Horse riding, working and driving. / chores, grooming, farrier & vet visits, etc.; and Special programs; public programs.

What is your primary interpretive theme?

Conservation and Community	26
Corridor of Commerce	2
Making of Nations	6
Pre-European Settlement	1

What is the name of this site?	Please describe your primary interpretive themes or stories.	Please describe the optimal 'visitor experience' for people who come to your site.	What aspects of interpretive programming would you like to improve at your site?
Brownell library	We do a varied amount of programming on many themes- ranging from science to art -it is a public library so we try to appeal to all	Best recently was a hugely attended program on WWII Prisoners of War in Stark NH. and a program on Essex history	More ways to get patrons to museums and out door venues.
Carillon Cruises LLC	I cover all aspects from formation of Lake to current stories relative to conservation and other lore.	They are amazed at the historical significance of the area.	None
Casavant Natural Area/Gilbrook Natural Area/Landry Park and Myers Pool/Millyard Canoe Access/Riverwalk	Winooski is a community with long and rich cultural history, as well as some fantastic natural resources. In recent years our community hasn't had a focused "recreation" function, and as such we haven't had much capacity to celebrate these features. We'd love to find ways to highlight both our cultural history (and present) as well as our natural resources.	Winooski, as a fairly "urban" community, isn't known for it's parks and trails, but as a very small geographic community and as such our many parks/trails are within easy walking distance of almost everyone in town. At this point I think our biggest priority is getting the word out to residents about these great resources. We hope that visitors will enjoy well- maintained, well-marked, and scenic trails and facilities that they will want to come back to frequently.	As mentioned, we are really wanting to step up general outreach to promote our parks and trails. As our capacity grows it would be wonderful to start seeing more formal "interpretive" programming that highlights the natural and cultural history of the area.
Champlain Bikeway Rest Areas			
Charlotte Library	Local history collection, exhibits of local materials.	Research local history, learn about the community.	More connections with local history sites

Charlotte Memorial Museum	History of town and community	Learn how early settlers lived and worked	Improve exhibits and information
Chimney Point State Historic Site	Mission is interpretative of three earliest cultures in region--Native American, French colonial, early Vermont/Early American history	Experiencing the entire historic landscape, with the historic building, and getting a feeling for the continuum of history at this very strategic location on Lake Champlain. We hope they will understand how people shaped this place and how the place shaped them over the millennia, the importance of treasuring our heritage, preserving it for future generations, that history is exciting, and can play a role in lives today (ex. Lake Champlain Bridge).	Continuing with interactivity.
Colchester Old School House	hold early century education classes for every second grade in our school district; videos describing the renovation of the schoolhouse and area points of interest - Fort Ethan Allen, Railroad, Bog	Experience what it was like to go to a one room Schoolhouse	We desire to have a different display of historical significance each season, so people will return time and time again to the Schoolhouse, not just assume they have been there - done that!
Colchester Pond, Delta Park, Macrae Farm	We help visitors to understand and connect with nature.	Visitors would engage with nature and be inspired to visit again and help to protect it.	We have many loyal park visitors who come to the parks and view our interpretive materials; we need more help reaching out to people who have not been to our parks (bringing in new visitors).
DAR John Strong Mansion Museum	John Strong family 1760 - 1860 John Strong being a prominent figure in community and early Vermont State Government.	Visitor will see how a prominent family lived in the late 1700's early 1800's in Addison Vermont and learn history of area and the family.	

Derway Island, Donohue Sea Caves, Mayes Landing, Salmon Hole	We hope to bring people to our parks to connect with nature.	We hope that visitors feel engaged and inspired during their visits so that they want to return, and so that they will also feel inspired to help protect natural areas.	We have many dedicated visitors who use our interpretive programming, but we could use more help bringing in new visitors.
ECHO Lake Aquarium and Science Center, Leahy Center for Lake Champlain	Ecology, culture, history and opportunities for stewardship of the lake champlain basin. Three major changing exhibits annually interpret a wide range of topics from natural history, physics, Native American stories, games and literature.	Engage with the 100 hands-on exhibits and learn about the live animals through demonstrations and tank observations.	the interactivity of the hands-on exhibits, more citizen science, more compelling stewardship messaging
Ed Weed Fish Culture Station	How the hatchery works. Fishes of Lakes Champlain/Lake dynamics Lamprey life cycle	Learn the above themes, feed fish and observe wildlife on station	This and the question below is handled more through our Fisheries Division Outreach Team
Essex Junction Recreation and Parks	parks and recreation	recreation, nature, exercise, connect with others, be active	Signage; interpretive panels
Ethan Allen Homestead	The WVPD and the Ethan Allen Homestead Museum have teamed up to offer a "Ethan Allen Homestead: Then and Now" program, where the Museum focuses on the "then" and the WVPD focuses on the "now." The WVPD also does additional programming outside of the Ethan Allen theme; that programming focuses more on nature.	In an optimal visit to the Ethan Allen Homestead, someone would visit both the Ethan Allen Homestead Museum and the surrounding lands managed by the WVPD.	We are always trying to reach out to new visitors.

Henry Sheldon Museum of Vermont History	The Sheldon is an art museum (fine and folk art), historic house museum of decorative arts, vintage clothing, museum of industry, commerce, and agriculture, and historic society of 100,000 works on paper to include photographs, architectural and industrial records, dairies, with copies of newspapers of Addison County since 1800.	Museum visitors experience life in a 19th century Vermont merchant's town house, enjoy exhibits of period and contemporary art and architecture, while younger visitors experience life of a child in the mid 19th century.	Identification of themes relevant to the current curriculum of Vermont elementary, middle, and high school students.
Intervale Center	Community food systems Agricultural heritage Community gardening Abnaki Heritage Garden	People are hungry to learn about where their food comes from!	Increased outdoor signage and formalized tour programming
Lake Champlain Maritime Museum	The Lake Champlain Maritime Museum delves into the rich history of the lake starting with Pre-European settlement up to modern day. We also emphasize the preservation of the history of Lake Champlain.	We stress personal interaction with our educators and volunteers. We want our visitors to have conversations with dedicated and knowledgeable staff, and walk away with a much broader understanding of the valuable cultural resource that Lake Champlain is.	Interactive multi-media would be a great addition.
Laplatte Nature Park	History of the land use and river (mill, etc)	Enjoy the natural beauty of the landscape.	
LaPlatte Rivermarsh Natural Area	Natural Communities	They observe, enjoy and make a discovery about nature.	Digital interpretation.
Milton Historical Society	Early settlement and life in Milton/Vermont Development & Landscape Change Milton Village Tourism boom of late 19th and early 20th centuries Farming	Research Gain new appreciation for Milton Discover unknown Enjoy our space	digital cataloging video
Milton Recreation Sites	n/a	View beautiful natural resources. Visit Town Office Building	any and all

Missisquoi National Wildlife Refuge	Wetlands and wildlife	Learn about the USFWS and the National Wildlife Refuge System, learn about Missisquoi NWR's importance and understand wetland values with associated wildlife; take a walk to observe wildlife or hunt, fish or photograph	instructor led group interpretive programs, onsite indoor and outdoor environmental education
Mount Independence State Historic Site	American Revolution some on Native American past	Visit the museum and absorb the information provided, get excited, and then go out into the historic landscape and let their imaginations go. They will feel the history coming through the soles of their shoes, and be inspired by the soldiers who built "Independence on Lake Champlain." They will understand the sacrifices and suffering, and how leaders and ordinary people can come together to do something extraordinary.	Would like to try some hand-held devices for some of the trails.
Mt Philo State Park	natural history and cultural history of the site	inspiring views	would like a full time interpreter
Muddy Brook Park, Muddy Brook Wetland Reserve, Winooski Gorge	We hope to bring visitors to our parks to help them connect with nature.	We hope that people feel engaged with nature and that they are inspired to return and to help protect it.	We have a lot of loyal visitors who regularly see our interpretive materials; we need help attracting new visitors who have never been to our parks before.
North Hero Public Library			
Otter Creek Swamps Natural Area	Natural communities, natural processes	Enjoy and discover nature	
Otter View Park			
Perkins Museum of Geology			

Pierson Library	The library provides citizens with access to the educational, cultural, recreational, and research benefits of a free public library.	We hope that visitors enjoy a welcoming atmosphere in which they can pursue their interests, meet with community members and experts, and find materials, programs, and services that will improve their lives.	We would like to find more programs to meet the needs and interests of young professionals without children, business people, and other under-served portions of our population.
Rokeby Museum	The Underground Railroad and the lives of the Robinson family, who lived at Rokeby through four generations and nearly 200 years.	Visiting the new exhibit - Free & Safe: The Underground Railroad in Vermont - ideally accompanied by a guided tour of the house.	Add an audio component to the rounds and outbuildings; install interpretive panels at several locations
Shelburne Bay Park	Ti-Haul trail history: Moving the Ticonderoga	Beautiful natural environment with trails to explore, nice viewing areas to enjoy.	no programming to be planned
Shelburne Farms	Our mission is to educate for a sustainable future.	A very diverse experience, from school children who do hands-on activities on field trips or at summer camps, to people who come to walk on the walking trails, Inn guests who enjoy our Farm to Table dining, families who come to the Children's Farmyard.	We're working on a new interpretive video
South Burlington Recreation & Parks Department			
South Hero Community Library			
The Ethan Allen Homestead Museum	Living History; 18th Century Living	Ethan Allen, Revolutionary War Hero and Father of Vermont, Did not make furniture	Update current AV experience to current technology to improve the visitor orientation experience.
Town Hall Theater			
Town of Charlotte			

Trail Around Middlebury	informative hikes	learn about nature, science	more signs
University of Vermont Morgan Horse Farm			
Vergennes Opera House	Historic preservation, cultural community asset	They will see a show, a musical performance, dance, concert, or attend a wedding or special event.	We wish we were able to have staff at regular times so folks could come in and get a tour, but at this point we are an 100% volunteer organization.
Vermont National Guard Library and Museum	Involvement of Vermonters and Vermont military units in all wars since the country's founding.	They are impressed with the quality of the displays and the depth of coverage of historical events	Interactive displays and lectures
Vermont Folklife Center			
Williams Woods Natural Area	natural community	Enjoy and discover nature	digital
Winooski Memorial Library		Ideally, library patrons of all ages will find the information they seek, whether it's informational, educational or recreational.	We would like to offer more programs that provide opportunities for collaboration with other agencies.
Woodside Park	We want to bring people to our parks to connect with nature.	We hope that people feel engaged with nature and that they are inspired to return and to help protect it.	We have a lot of visitors who regularly use our parks and access the interpretive materials; we need more help attracting new visitors who have never been to the parks before.

Do you have any new interpretive efforts planned for the next five years?

No	13
Yes	24
Total	37

What is the name of this site?	Do you have any new interpretive efforts planned for the next five years?	If so, please describe them.	If you were a visitor to your site, what other sites along the Byway might be of interest to you?
Brownell library	Yes	Have passes for Fairbanks Museum and ECHO and VINS and Bird Museum Hope to encourage patrons to go	Railroad travel
Carillon Cruises LLC	Yes	New and better underwater sonar displays as well as videos can customers can take home of their experience.	Mt. independence, Lake Champlain Maritime Museum, Crown Point Historic Site, Fort Ticonderoga
Casavant Natural Area/Gilbrook Natural Area/Landry Park and Myers Pool/Millyard Canoe Access/Riverwalk	Yes	Trail signage; updated trail map; events in the parks (i.e. music/movies/etc.); expanded partnership with Winooski Valley Parks District	
Champlain Bikeway Rest Areas			
Charlotte Library	Yes	We will add a part-time local history librarian position beginning in July 2014.	Other sites in Charlotte

Charlotte Memorial Museum	Yes	Better interpretive signage; expand availability to the public; keep exhibits fresh	Champlain quadricentennial signage in the area; historical signage for the location of the Charlotte Whale, the Vermont State Fossil
Chimney Point State Historic Site	Yes	New and updated exhibits incorporating the archaeological and historic findings from the Lake Champlain Bridge project, 4 more outdoor interpretive signs as part of the bridge interpretive path from VT, over the bridge, and in NY. More cooperative work with Crown Point, NY, State Historic Site	Mount Independence, DAR John Strong Mansion Museum, LCM, some of state parks, Rokeby, perhaps Henry Sheldon Museum
Colchester Old School House	Yes	New information for this summer on the Colchester Bog being done by a graduate student at UVM - pamphlets, diorama, video	
Colchester Pond, Delta Park, Macrae Farm	Yes	We are always working on improving and expanding our educational programming (working with more schools, offering more community events, etc)	Any other parks/natural areas
DAR John Strong Mansion Museum	Yes	Planning to add programs conducted by experts in historical aspects of the time period that would draw increased number of visitors.	Chimney Point Historical Site, Crown Point Historical Site, Fort Ticonderoga, Maritime Museum

Derway Island, Donohue Sea Caves, Mayes Landing, Salmon Hole	Yes	We are always trying to expand and improve our educational programs and community events.	All of the parks/natural areas.
ECHO Lake Aquarium and Science Center, Leahy Center for Lake Champlain	Yes	Our 2014 - 2019 strategic plan includes the following: Sustainability Park - 2 acre interpretation of an urban wetland and waterfront, including renewable energy. Two new live animal and/or hands on exhibits. New pre-school learning and play area. On-water program. Presenting three major traveling changing exhibits annually from other science centers.	Sites that provide families with an educational, fun experience and science programs for adults
Ed Weed Fish Culture Station	No		
Essex Junction Recreation and Parks	No		
Ethan Allen Homestead	Yes	We are always trying to expand and improve our educational programs and community events.	Parks, museums, etc.
Henry Sheldon Museum of Vermont History	No		Morgan Horse Farm, Rokeby, Shelburne Museum, Shelburne Farms, Marble Museum, Middlebury College Museum of Art, and neighboring Historical Societies.

Intervale Center	No		
Lake Champlain Maritime Museum	No		Fort Crown Point, Fort Ticonderoga, Shelburne Museum.
Laplatte Nature Park	No		
LaPlatte Rivermarsh Natural Area	Yes	We may develop a digital interpretation.	LaPlatte Nature Park.
Milton Historical Society	Yes	Fully catalogued collections for easy referencing	Other historical museums, cemeteries, art-related venues
Milton Recreation Sites	No		other natural areas.
Missisquoi National Wildlife Refuge	No		Sand Bar WMA, Maquam WMA,
Mount Independence State Historic Site	Yes	updating orientation film	Chimney Point, LCMH, Ethan Allen Homestead
Mt Philo State Park	No		
Muddy Brook Park, Muddy Brook Wetland Reserve, Winooski Gorge	Yes	We are always trying to improve and expand our educational programs and community events.	Any of the other parks/natural areas
North Hero Public Library			
Otter Creek Swamps Natural Area	No		
Otter View Park			
Perkins Museum of Geology			

Pierson Library	Yes	Each month, we continue to build on the programming that we offer based on the feedback we receive from the community. We would like to have more computer training classes, community art classes, etc.	Shelburne Museum, Shelburne Farms, Shelburne Beaches.
Rokeby Museum	Yes	Seasonal exhibits Improvements to the house tour experience	
Shelburne Bay Park	No		
Shelburne Farms	Yes	Regular updating of our website and other informational material, and a new interpretive video	Ethan Allen Homestead, ECHO and Shelburne Museum.
South Burlington Recreation & Parks Department			
South Hero Community Library			
The Ethan Allen Homestead Museum	Yes	New exhibits and programs using new interpretive technology	Shelburne Museum, Maritime Museum, Chimney Point, Rokeby Museum
Town Hall Theater			
Town of Charlotte			
Trail Around Middlebury	Yes	more signs	Other hiking trails?
University of Vermont Morgan Horse Farm			

Vergennes Opera House	No		Vergennes' Main Street, the Vergennes Falls and walkway, Bixby Library, Lake Champlain Maritime Museum and Rokeby Museum.
Vermont National Guard Library and Museum	Yes	Institute more electronic media into our displays. Rearrange the layout of the museum so it is more historically continuous	Ethan Allen Homestead
Vermont Folklife Center			
Williams Woods Natural Area	Yes	possibly digital	
Winooski Memorial Library	No		We could provide information for the Byway to our visitors.
Woodside Park	Yes	We are always trying to improve and expand our educational programs and community events.	Any of the parks/natural areas.

Site Networks

What is the name of this site?	If you were a visitor to your site, what other sites along the Byway might be of interest to you?	Name three other Byway sites that you might be interested in building thematic tours with.	Are there sites in New York, New Hampshire or Massachusetts that you would like to work with? If so, please list them below.
Town of Milton Rec Sites	Other natural areas.		
Champlain Bikeway Rest Areas			
Otter Creek Swamps Natural Area		LaPlatte River Marsh Natural Area; Cornwall Swamp Wildlife Management Area	
Williams Woods Natural Area		Raven Ridge Natural Area	
LaPlatte Rivermarsh Natural Area	LaPlatte Nature Park.	LaPlatte Nature Park; state fishing access on Bay Road; town land across the road from our land	
Shelburne Farms		Ethan Allen Homestead, ECHO and Shelburne Museum.	
Carillon Cruises LLC	Mt. independence, Lake Champlain Maritime Museum, Crown Point Historic Site, Fort Ticonderoga	Mt Independence; lake Champlain Maritime Museum; Chimney Point historic site.	Fort Ticonderoga
DAR John Strong Mansion Museum	Chimney Point Historical Site, Crown Point Historical Site, Fort Ticonderoga, Maritime Museum	Chimney Point; Crown Point Historical Site	Crown Point; Fort Ticonderoga

Vermont National Guard Library and Museum	Ethan Allen Homestead	Lake Champlain maritime museum; Fleming museum; Ethan Allen homestead	
North Hero Public Library			
Missisquoi National Wildlife Refuge	Sand Bar WMA, Maquam WMA,		
Milton Historical Society	Other historical museums, cemeteries, art-related venues	Georgia Historical Society; Colchester Historical Society; St. Albans Historical Museum	
Winooski Memorial Library	We could provide information for the Byway to our visitors.		
Trail Around Middlebury	other hiking trails?		
ECHO Lake Aquarium and Science Center, Leahy Center for Lake Champlain	Sites that provide families with an educational, fun experience and science programs for adults	Lake Champlain Maritime Museum	
Mount Independence State Historic Site	Chimney Point, LCM, Ethan Allen Homestead	Chimney Point, LCM; Ethan Allen Homestead	Saratoga National Historical Park; Bennington Battle site; Crown Pt, NY, SHS
Chimney Point State Historic Site	Mount Independence, DAR John Strong Mansion Museum, LCM, some of state parks, Rokeby, perhaps Henry Sheldon Museum	Mount Independence; LCM; Ethan Allen Homestead;	Crown Point, NY, State Historic Site; Saratoga National Historical Park
Pierson Library	Shelburne Museum, Shelburne Farms, Shelburne Beaches.	Shelburne Farms; Shelburne Museum; Shelburne Orchards	
Brownell library	Railroad travel	Maritime Museum; ECHO; Isle La Motte Fisk Quarry	Plattsburgh NY-re War of 1812; Fort Ticonderoga; Larrabee Point historic boat tours

Vergennes Opera House	Vergennes' Main Street, the Vergennes Falls and walkway, Bixby Library, Lake Champlain Maritime Museum and Rokeby Museum.	Bixby Library; Lake Champlain Maritime Museum; Rokeby Museum	
The Ethan Allen Homestead Museum	Shelburne Museum, Maritime Museum, Chimney Point, Rokeby Museum	Chimney Point; Rokeby Museum; Mt. Independence	Crown Point; Ft. Ticonderoga; Fort #4
Rokeby Museum		Sheldon Museum	North Star Museum, Ausable, New York
Colchester Old School House		Grand Isle Schoolhouse	
Charlotte Library	Other sites in Charlotte	Thorp Barn, entry to Charlotte; Rokeby Museum; Shelburne Museum	Sites in Essex, New York
Charlotte Memorial Museum	Champlain quadricentennial signage in the area; historical signage for the location of the Charlotte Whale, the Vermont State Fossil		
Muddy Brook Park, Muddy Brook Wetland Reserve, Winooski Gorge	Any of the other parks/natural areas	Any other parks; Ethan Allen Homestead Museum (in progress)	
Ethan Allen Homestead	Parks, museums, etc.	Any other parks; Ethan Allen Homestead Museum (in progress)	
Derway Island, Donohue Sea Caves, Mayes Landing, Salmon Hole	All of the parks/natural areas.	Any other parks; Ethan Allen Homestead Museum (in progress)	
Woodside Park	Any of the parks/natural areas.	Any other parks; Ethan Allen Homestead Museum (in progress)	

Colchester Pond, Delta Park, Macrae Farm	Any other parks/natural areas	Any other parks; Ethan Allen Homestead Museum (in progress)	
Lake Champlain		Shelburne Museum, ECHO, Shelburne Farms	Fort Crown Point, Fort Ticonderoga, Chimney Point
Maritime Museum		Middlebury College Museum of Art, Shelburne Museum, Farms	Fort Ticonderoga, Saint Gaudens National Historic Site, Billings Farm & Museum Vermont
Henry Sheldon Museum			

Do you have ideas for themes that would provide continuity among Lake Champlain Byway sites?

1812			
aspects of the Making of Nations theme-- Revolutionary War	Steamships on Lake Champlain	Boatbuilding (2) or birding	
Community architecture	contact period	how natural history/resources and historic resources can be/are one and the same	
could break down Making of Nations to French and Indian time period	Economic Development through the arts	Preservation	
Highway of Commerce	same breaking down Making of Nations-- Revolutionary War period	Contact Period	
lake stewardship	Highway of War	Conservation of Lake Champlain	
Nourishing your body, mind, and spirit.	land use patterns	Marble	

sites that share our commitment to a sustainable future	Furniture Makers	History
War of Independence	sites with a Farm to Table theme	Shared waterways
watersheds	Maritime History	18th Century Settlement of Vermont
Ecology	Wildlife Habitat	Wetlands

Outreach Services and Discount Coupon

What is the name of this site	What outreach services do you belong to/use (from list)	What outreach services do you belong to/use (other)	Do you give discount coupons?	Are you interested in participation in a joint membership or discount ticket program?
Town of Milton Rec Sites		Vermont Attractions Association	No	Yes
Shelburne Farms	Blue Map and/or PP&D brochure distribution service; Lake Champlain Regional Chamber of Commerce	Vermont Attractions Association; Shelburne Business and Professional Association; Vermont Chamber	No	
Carillon Cruises LLC	Addison County Chamber of Commerce	Vermont Attractions Association	No	No
Laplatte Nature Park			No	No
Shelburne Bay Park			No	No
DAR John Strong Mansion Museum	Addison County Chamber of Commerce		No	

Vermont National Guard Library and Museum			No	No
Missisquoi National Wildlife Refuge		Franklin Co. and Swanton Chamber of Commerce	No	No
Milton Historical Society			No	No
Winooski Memorial Library			No	No
Trail Around Middlebury	Addison County Chamber of Commerce		No	No
Mt Philo State Park		Vermont Attractions Association	Yes	
Ed Weed Fish Culture Station		Vermont Attractions Association	No	No
ECHO Lake Aquarium and Science Center, Leahy Center for Lake Champlain	Blue Map and/or PP&D brochure distribution service; Lake Champlain Regional Chamber of Commerce	Vermont Attractions Association	Yes	No
Casavant Natural Area/Gilbrook Natural Area/Landry Park and Myers Pool/Millyard Canoe Access/Riverwalk	Lake Champlain Regional Chamber of Commerce		No	
Mount Independence State Historic Site	Blue Map and/or PP&D brochure distribution service; Addison County Chamber of Commerce	Vermont Attractions Association	Yes	Yes
Chimney Point State Historic Site	Blue Map and/or PP&D brochure distribution service; Addison County Chamber of Commerce	Vermont Attractions Association	Yes	Yes
Essex Junction Recreation and Parks			No	No
Pierson Library			No	No

Brownell library	Blue Map and/or PP&D brochure distribution service; Lake Champlain Regional Chamber of Commerce	Tell me more about Vt Attractions?	No	Yes
Vergennes Opera House	Addison County Chamber of Commerce		No	No
The Ethan Allen Homestead Museum	Blue Map and/or PP&D brochure distribution service; Lake Champlain Regional Chamber of Commerce		Yes	Yes
Rokeby Museum	Blue Map and/or PP&D brochure distribution service; Lake Champlain Regional Chamber of Commerce; Addison County Chamber of Commerce	State Welcome Centers	No	
Colchester Old School House	Blue Map and/or PP&D brochure distribution service		No	No
Charlotte Library			No	Yes
Charlotte Memorial Museum			No	No
Intervale Center	Lake Champlain Regional Chamber of Commerce		No	No
Muddy Brook Park, Muddy Brook Wetland Reserve, Winooski Gorge	Blue Map and/or PP&D brochure distribution service	We distribute flyers in our informational boards, at libraries, schools, etc.	No	No
Ethan Allen Homestead	Blue Map and/or PP&D brochure distribution service	We distribute flyers in our informational boards, at libraries, schools, etc.	No	No

Derway Island, Donohue Sea Caves, Mayes Landing, Salmon Hole	Blue Map and/or PP&D brochure distribution service	We distribute flyers in our informational boards, at libraries, schools, etc.	No	No
Woodside Park	Blue Map and/or PP&D brochure distribution service	We distribute flyers in our informational boards, at libraries, schools, etc.	No	No
Colchester Pond, Delta Park, Macrae Farm	Blue Map and/or PP&D brochure distribution service	We distribute flyers in our informational boards, at libraries, schools, etc.	No	No
Lake Champlain Maritime Museum	Blue Map and/or PP&D brochure distribution service, Lake Champlain Regional Chamber of Commerce, Addison County Chamber of Commerce, Vermont Attractions Association		Yes	Yes
Henry Sheldon Museum	Addison County Chamber of Commerce	Publications of the Addison Independent; Better Middlebury Partnership	No	Yes