

VULNERABLE POPULATION OUTREACH

Local Hazard Mitigation Plan recommendations for Addison County planners

Local Emergency Management Plans

- Manage an immediate response
- Guide short-term recovery efforts
- What actions to take before, during, and immediately after an incident
 - Alert messaging and shelter coordination

Local Hazard Mitigation Plans

- Aim to reduce or eliminate long-term risk to people and property from natural hazards
 - Solicit community feedback on perceived hazard risk levels
 - Outline projects and policies that may span multiple years

COMMUNITY AND STAKEHOLDER OUTREACH REQUIREMENTS

- Local and regional agencies involved in hazard mitigation
- Development-regulating agencies
- Neighboring communities
- Representatives of businesses, academia, and other private institutions
- Representatives of nonprofit and community-based organizations
- ***Underserved communities and socially vulnerable populations***

Defining Vulnerable Populations

Vulnerability is not a fixed trait inherent to any given individual. Vulnerability can change at any moment.



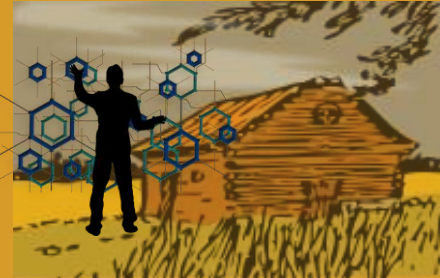
An individual may have intersecting vulnerabilities

Examples of Vulnerabilities



Lacking **Economic** Capital

Those who lack economic capital may not be able to secure basic necessities like sufficient food and safe shelter in disaster scenarios



Lacking **Social** Capital

Those who lack social capital may be left behind in the hazard planning and recovery process due to isolation, limited access to support networks, and weak connections to decision-making authorities and institutions.



Lacking **Physical** Capital

Those who lack physical capital resulting from health challenges or disability status may not be able to quickly act on emergency orders or may be heavily dependent on social services that are strained during and after disasters.

COMMUNITY STAKEHOLDER CATEGORIES

- Human Security: Food, Shelter, and Personal Safety
- Senior Care
- Childcare and Education
- Healthcare and Disability Services
- Migrant Farm Workers
- Rural Connectivity

Outreach Starter Kit

- Introduce yourself, your organization, and your municipality
- Explain LHMPs and the organization's relevance to them
 - You support X community members who might be disproportionately vulnerable in the face of disaster for X reasons, and we want them to have a voice in this process.
- Make a request
 - Will you please share the attached flier with your team members and community? It includes details on how to get involved through [an upcoming public meeting, a survey, etc.].
 - Are there any gathering spaces or upcoming events where we might post information to solicit feedback on our town's hazard mitigation efforts?
 - Where do the people you serve primarily get their information?

Important Considerations

- Housing vulnerabilities (renters, mobile home residents, unhoused community)
- Technological access
- Gender vulnerabilities
- Low-income vulnerabilities

Human Security

Organizations

- Addison County Relocalization Network (ACORN)
- Addison Housing Works
- Champlain Valley Office of Economic Opportunity
- Charter House Coalition
- Giving Fridge
- Helping Overcome Poverty's Effects (HOPE)
- Habitat for Humanity of Addison County
- John Graham Housing and Services
- Monkton Friends Methodist Church Little Free Pantry
- Starksboro Food Shelf
- United Way of Addison County
- Vergennes Congregational Church Community Food Shelf

Questions?